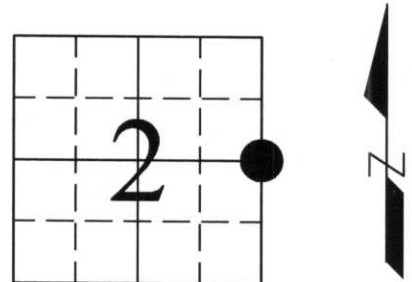


U.S. PUBLIC LAND SURVEY MONUMENT RECORD

Note: This form is intended and designed to fulfill all requirements of Wisconsin Administrative Code, Chapter A-E 7.08, U.S. Public Land Survey Monument Record (3) (a) (b) (c) (d) (e) (f) (g) (h) (i). An additional sheet may be added if necessary to conform with said requirements.

(a) Corner location: Township 33 North
 Range 8 East
 Town/City/Village Russell
 County Lincoln



(b) (f) (g) (h) Description of monument found at this corner and if it was accepted, state all evidence (material, testimonial, occupational, plats, records, other monuments) used as a basis for accepting. If not accepted or if nothing was found, state evidence used as basis for establishing location. If reestablished through lost corner proportionate methods, indicate all monuments, distances and directions used to establish.

1854 - JACKSON L. PRENTICE SET QUARTER SECTION POST, WITNESSED BY: HEMLOCK 10 N30°E 13 LINKS
 BIRCH 10 S54°W 30 LINKS

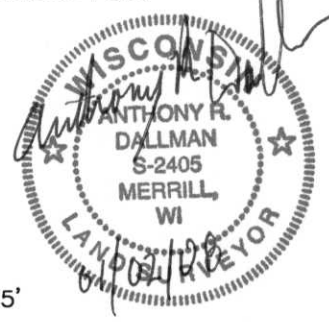
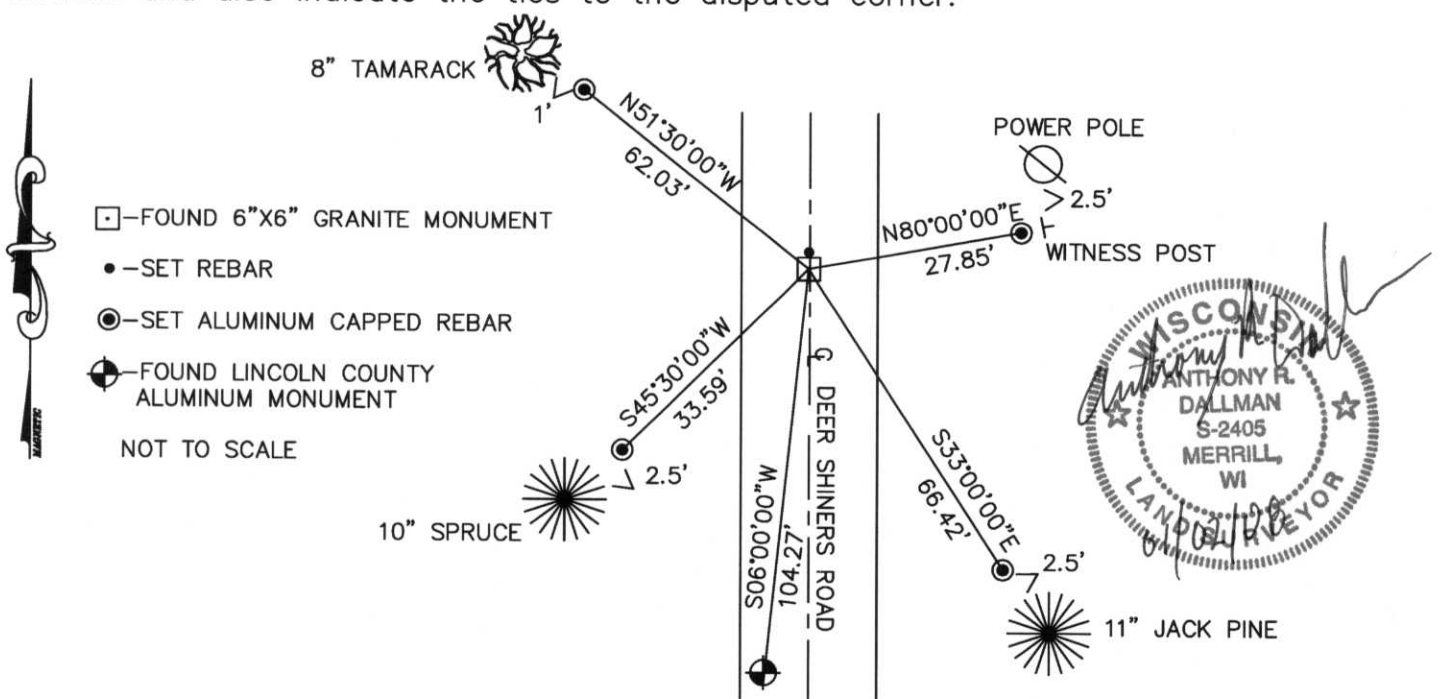
UNKNOWN DATE - UNKNOWN SURVEYOR SET 6"X6" GRANITE MONUMENT.

1939 - FRANCIS X. FOX FOUND STONE IN PLACE, MAP #S154A.

1988 - MARVIN E. SEYMOUR SET LINCOLN COUNTY ALUMINUM MONUMENT 6' WEST OF CENTERLINE DEERSHINERS ROAD, MAP #L118A,
 WITNESSED BY: FB 6" N64°W 143.88' (NAIL)
 FB 6" N17°W 131.39'
 PJ 8" N46°E 65.09'
 PN 4" S89°E 41.88'

2000 - FOUND 6"X6" GRANITE MONUMENT NEAR CENTERLINE DEER SHINERS ROAD, ALSO FOUND LINCOLN COUNTY ALUMINUM MONUMENT BEARING S06°W, 104.27' FROM GRANITE MONUMENT. WITNESSED AS SHOWN BELOW.

(c) (d) (e) Plan view of corner with ties to at least 4 witness monuments. If in disagreement with previously established corner, show the distance between the two corners and also indicate the ties to the disputed corner.



(i) I, Anthony R. Dallman
 (type or print name) certify that the corner location on this record was determined by me or under my direction and control and that this U.S. Public Land Survey Monument Record is correct and complete to the best of my knowledge and belief.

Anthony R. Dallman
 Signature

04/02/08
 Date

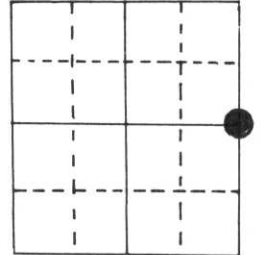
Index No. C-21

U.S. PUBLIC LAND SURVEY MONUMENT RECORD

Note: This form is intended and designed to fulfill all requirements of Wisconsin Administrative Code, Chapter A-E 5.02, U.S. Public Land Survey Monument Record (3) (a) (b) (c) (d) (e) (f) (g) (h) (i). An additional sheet may be added if necessary to conform with said requirements.

(a) Corner location: Township 33 North
 Range 8 East/~~West~~

Town/City/Village Russell
 County Lincoln



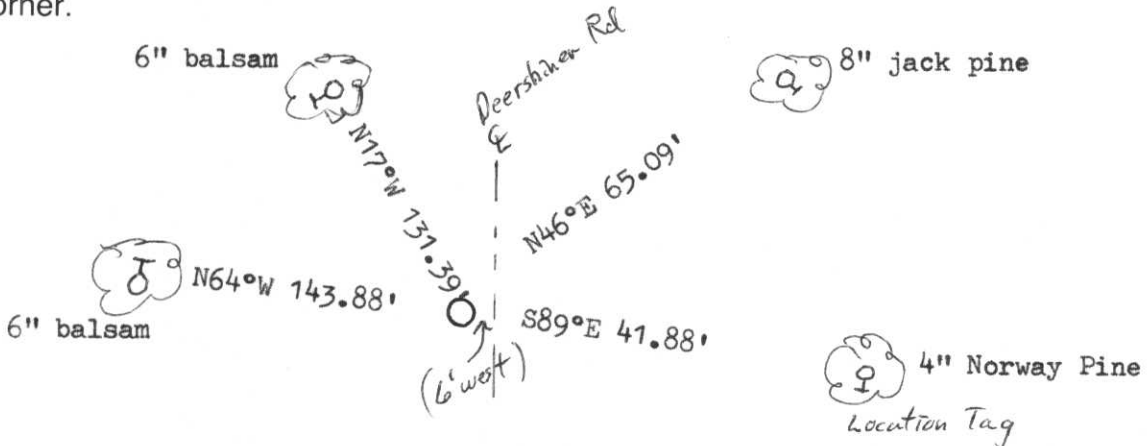
Section 2

(b) (f) (g) (h) Description of monument found at this corner and if it was accepted, state all evidence (material, testimonial, occupational, plats, records, other monuments) used as a basis for accepting. If not accepted or if nothing was found, state evidence used as basis for establishing location. If reestablished through lost corner proportionate methods, indicate all monuments, distances and directions used to establish.

Original by Jackson L. Prentice, 1854, BTs Heml 10" N30°E 13 lks., BW 10" S54°W 30 lks.

Town road has since been built on the section line, low swampy area. I dug in road bed but found nothing. Set aluminum monument, buried in road, at the same proportion ratio as the W¹/₄ that was found. Set on line between the NW & SW of 2. The east line distance was within a few feet of the same as the west line, both being about 230' longer than the original.

(c) (d) (e) Plan view of corner with ties to at least 4 witness monuments. If in disagreement with previously established corner, show the distances between the two corners and also indicate the ties to the disputed corner.



all distances to nail

(i) I, Marvin E. Seymour
 (type or print name) certify that the corner location on this record was determined by me or under my direction and control and that this U.S. Public Land Survey Monument Record is correct and complete to the best of my knowledge and belief.

Marvin E. Seymour Oct. 7, 1988
 Signature Date



C-21