

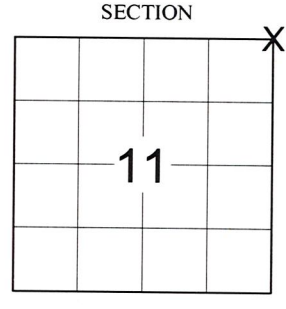
# LINCOLN COUNTY U.S. PUBLIC LAND SURVEY MONUMENT LOCATION RECORD

SECTION 11  
 TOWNSHIP 33 N  
 RANGE 8 E  
**RUSSELL**  
 CITY, VILLAGE, TOWN

**E-21**  
 NO.

LANDMARK       BENCHMARK \_\_\_\_\_  
 CORNER IDENTITY: 3/4" x 24" REBAR  
 LINCOLN COUNTY COORDINATE: N: \_\_\_\_\_  
 E: \_\_\_\_\_  
 ELEVATION-(FEET): \_\_\_\_\_ DATUM: \_\_\_\_\_  
 WEATHER: CLEAR AND SUNNY  
 DATE OF SURVEY: 3/30/2020 TEMPERATURE: 45 °F  
 SURVEY PARTY: KEITH WALKOWSKI / COLLIN MARQUARDT

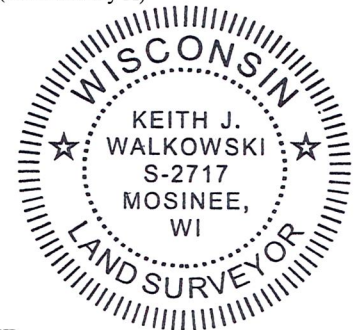
FOUND   
 SET   
 RESET   
 RE-TIED



LOCATION  
(Indicated By X)

**BASIS FOR MONUMENT LOCATION:**  
 (DESCRIBE METHOD OF SURVEY AND CORNER AUTHENTICATION)

SEARCHED FOR THE NORTHEAST CORNER OF SECTION 11 AND FOUND A SPIKE AND ONE TIE FROM THE RECORD TIE SHEET DATED OCTOBER 7, 1988 BY MARVIN SEYMOUR. ALSO FOUND A 3/4" REBAR FROM A PLAT OF SURVEY BY PFLIEGER. LOCATED THE SPIKE AND REMOVED TO SEARCH FOR THE ALUMINUM MONUMENT SET BY MARVIN SEYMOUR. COULD NOT LOCATE THE ALUMINUM MONUMENT WITH A METAL DETECTOR. ACCEPTED THE FOUND SPIKE AS THE CORNER SINCE IT MATCHED THE COORDINATES SHOWN ON THE SECTION SUMMARY FROM 2005 WITHIN REASON AND THE ONE REMAINING TIE. SET A 3/4" x 24" REBAR AT THE CORNER LOCATION 0.5' BELOW ROAD SURFACE AND SET ADDITIONAL TIES TO PERPETUATE THE CORNER LOCATION AS SHOWN BELOW.



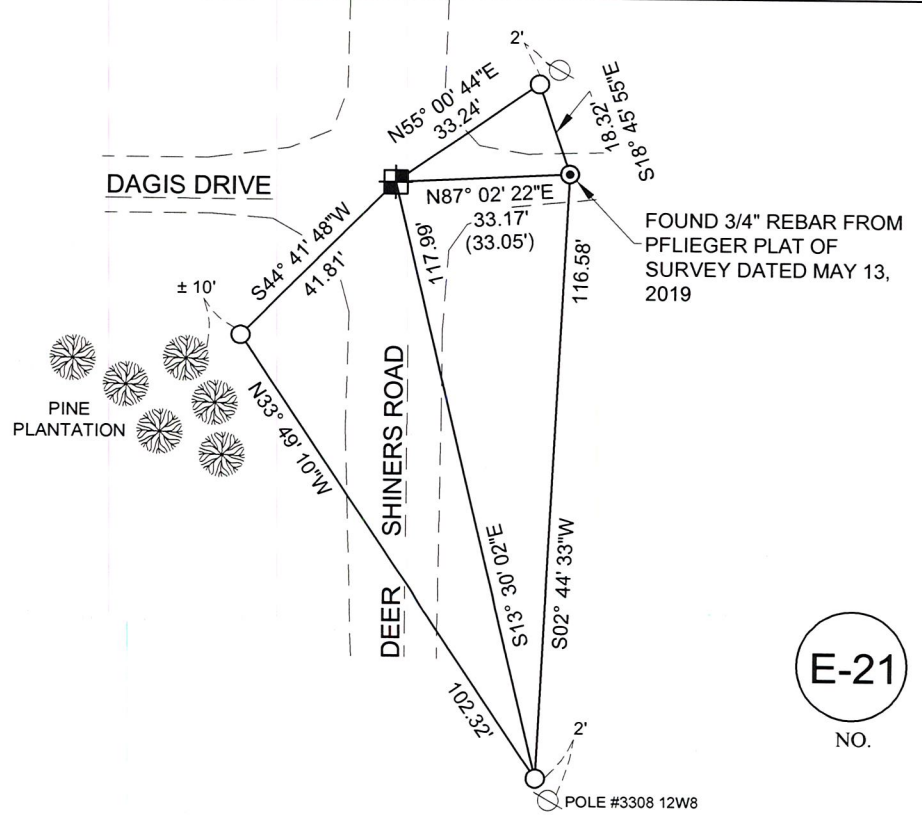
FIELD BOOK NO. NA PAGE NO. NA  
 COMPANY RIVERSIDE LAND SURVEYING LLC

CERTIFIED CORRECT:  
*Keith J. Walkowski*  
 KEITH J. WALKOWSKI S-2717  
 Professional Land Surveyor  
 DATE: APRIL 19TH, 2020

**TIE SKETCH:**

- SET 3/4" x 24" REBAR MONUMENT
- SET 1-1/4" O.D. x 24" IRON PIPE
- FOUND 3/4" REBAR
- EXISTING UTILITY POLE

RECEIVED BY LINCOLN COUNTY  
 SURVEYOR THIS 20<sup>TH</sup> DAY  
 OF April 20 20  
*Tony Dahr*  
 COUNTY SURVEYOR



BEARINGS ARE BASED ON THE LINCOLN COUNTY COORDINATE SYSTEM NAD 83 (2011) AND REFERENCED AS SHOWN  
 THIS DRAWING IS NOT TO SCALE

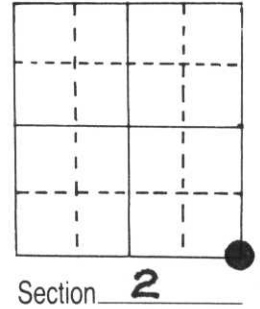
**E-21**  
 NO.

# U.S. PUBLIC LAND SURVEY MONUMENT RECORD

Note: This form is intended and designed to fulfill all requirements of Wisconsin Administrative Code, Chapter A-E 5.02, U.S. Public Land Survey Monument Record (3) (a) (b) (c) (d) (e) (f) (g) (h) (i). An additional sheet may be added if necessary to conform with said requirements.

(a) Corner location: Township 33 North  
 Range 8 East ~~West~~

Town/City/Village Russell  
 County Lincoln

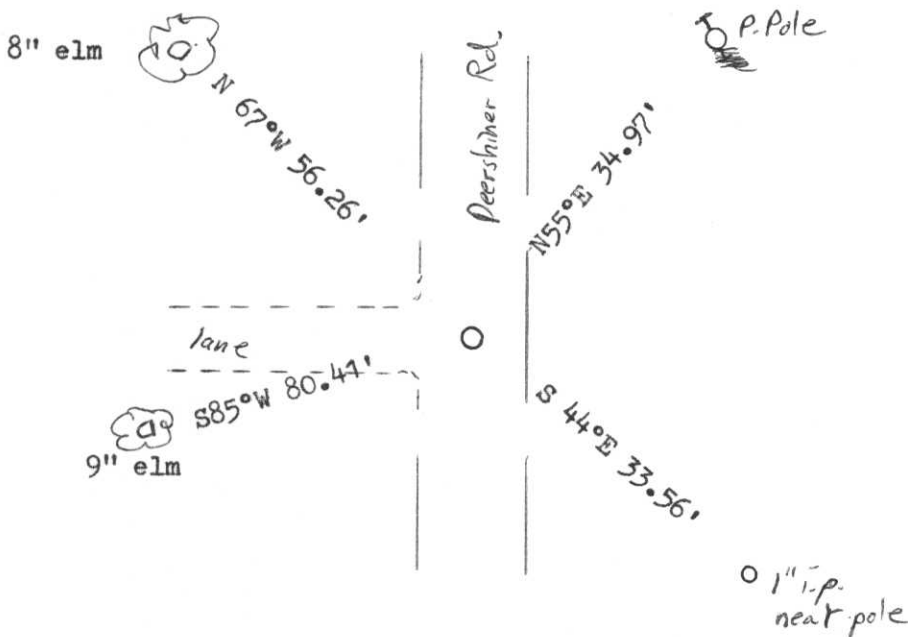


(b) (f) (g) (h) Description of monument found at this corner and if it was accepted, state all evidence (material, testimonial, occupational, plats, records, other monuments) used as a basis for accepting. If not accepted or if nothing was found, state evidence used as basis for establishing location. If reestablished through lost corner proportionate methods, indicate all monuments, distances and directions used to establish.

Original by Jackson L. Prentice, 1854, BTs mpl 10" S85°E 35 lks., bals 10" N 37°E 24 lks.,  
 mpl 10" S45 °W 55 lks., mpl 8" N48°W 40 lks.

Resident land owner, Sosnovske, said the corner is at the intersection of road and lane.  
 I dug and found nothing so I set aluminum monument at the intersection.

(c) (d) (e) Plan view of corner with ties to at least 4 witness monuments. If in disagreement with previously established corner, show the distances between the two corners and also indicate the ties to the disputed corner.



(i) I, Marvin E. Seymour  
 (type or print name) certify that the corner location on this record was determined by me or under my direction and control and that this U.S. Public Land Survey Monument Record is correct and complete to the best of my knowledge and belief.

Marvin E. Seymour Oct-7, 1988  
 Signature Date

