

U.S. PUBLIC LAND SURVEY MONUMENT RECORD

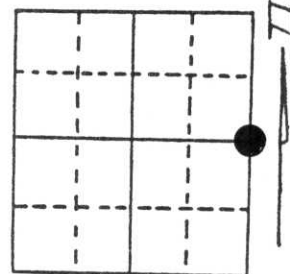
Note: This form is intended and designed to fulfill all requirements of Wisconsin Administrative Code, Chapter A-E 5.02, U.S. Public Land Survey Monument Record (3) (a) (b) (c) (d) (e) (f) (g) (h) (i). An additional sheet may be added if necessary to conform with said requirements.

(a) Corner location: Township 33 North

Range 8 East

Town/Village RUSSELL

County LINCOLN



Section 1

(b) (f) (g) (h) Description of monument found at this corner and if it was accepted, state all evidence (material, testimonial, occupational, plats, records, other monuments) used as a basis for accepting. If not accepted or if nothing was found, state evidence used as basis for establishing location. If reestablished through lost corner proportionate methods, indicate all monuments, distances and directions used to establish.

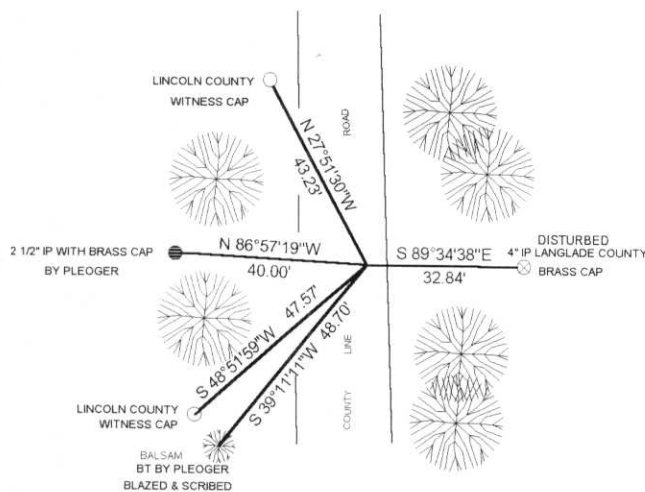
ORIGINAL CORNER SET BY H.C. FELLOWS IN 1859

MARCH OF 1981 DAN PLEOGER RECOVERED A 4" IP BRASS CAP WITNESS CORNER 50 LINKS EAST OF CORNER POSITION. HE SET A RAILROAD SPIKE 50 LINKS WEST OF THE WITNESS CORNER AND A SECOND WITNESS CORNER, 2 1/2" IP BRASS CAP 18" ABOVE GROUND, 40 FEET WEST. IN ADDITION, SCRIBED AND BLAZED A BALSAM S36°W @ 48.70 FEET

NO EVIDENCE OF THE RAILROAD SPIKE FOUND. ROAD CONDITIONS VERY WET AND UNSTABLE. RECOVERED BOTH BRASS CAPS AND SCRIBED AND BLAZED BALSAM

TOWN OF RUSSELL CHAIRMAN, RODNEY BURGERNER, REQUESTED THAT CORNER NOT BE RESET DUE TO GROUND CONDITIONS.

(c) (d) (e) Plan view of corner with ties to at least 4 witness monuments. If in disagreement with previously established corner, show the distances between the two corners and also indicate the ties to the disputed corner.



RECEIVED AT LINCOLN COUNTY
 COURTHOUSE THIS 28th DAY
 OF June 19 96
Pat Pleoeger
 TAX DESCRIPTION OFFICE

(i) I, DAVID L. LEMKE
 (type or print name) certify that the corner location on this record was determined by me or under my direction and control and that this U.S. Public Land Survey Monument Record is correct and complete to the best of my knowledge and belief.

David Lemke
 Signature Date 6.6.96



Index No. C-25

CERTIFIED LAND CORNER RESTORATION

C-25

Index No. C-1

State of Wisconsin

County of Langlade ss.

I Daniel K. Pleoger, do hereby certify that on the 30th day of December, 19 80, I found evidence of the Quarter corner of Sections 1 and 6 Township 33, North, Range 8 and 9 East, Fourth Principal Meridian, as described hereon; and that from this evidence I established a new monument and accessories as described hereon to perpetuate the original location of this corner.

Resident witnesses:



History of original corner establishment:

Original corner established by H.C. Fellows, deputy surveyor, in 1859 from which Sugar 10" bears S20°E 47 links, Sugar 11" bears S32°W 31 links, Sugar 11" bears N51°W 17 links, Birch 24" bears N66°E 18 links.

Description of corner evidence found:

Recovered a 4" iron pipe filled with concrete and capped with a 4" diameter brass cap - stamped: Projecting 24" above ground.

E 1/4 CR 1-33-8

Description of monument and accessories I established to perpetuate the original location of this corner.

Set a railroad spike 50 links west of witness corner for true corner. Spike is 6" below surface.

Set a 2-1/2" iron pipe with screw-on brass cap - stamped: Projecting 18" above ground.

Marked NBT to true corner:

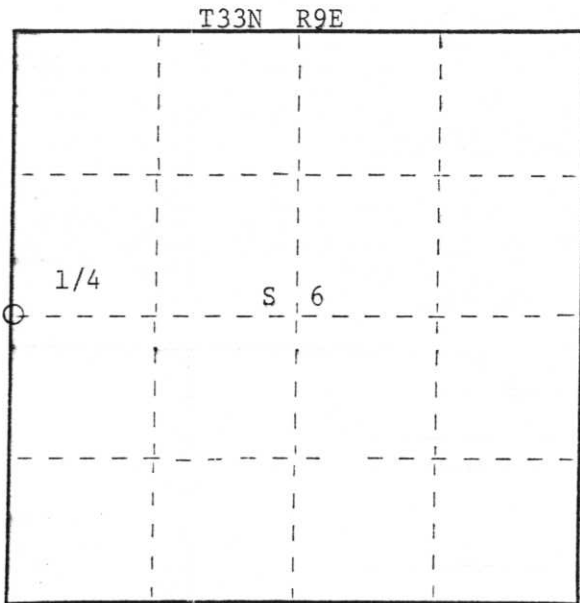
Balsam S36°W 48.70 feet - scribed 1/4 B.T.

RECEIVED AT LINCOLN COUNTY COURTHOUSE THIS 25th DAY OF April 19 96
Pat Priebe
TAX DESCRIPTION OFFICE

Langlade County
T33N
R8E | R9E
1 | 6
4-19-38
Cor. 50 lks. W.

T33N
R8E | R9E
1/4 | 6 W.C.
E. 40 ft. to Cor.
S1537 - 1980

FORM 985 H. C. MILLER CO., MILWAUKEE



○ = Corner monument restored.

Dated at Rhineland, Wis., this 23rd day of March, 19 81.

Signature Daniel K. Pleoger Title Registered Land Surveyor Registration No. 1537
(County Surveyor, Registered Land Surveyor, or other duly authorized official)

Office of Register of Deeds, County of _____, I hereby certify that the within instrument was filed in this office for record on the _____ day of _____, 19 _____ at _____ o'clock _____ M.

(Register of Deeds)

By _____ Deputy