

U.S. PUBLIC LAND SURVEY MONUMENT RECORD

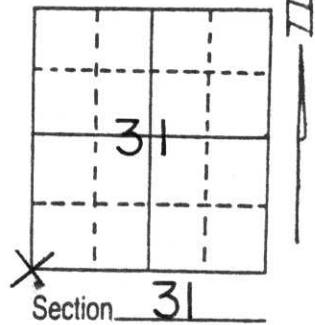
Note: This form is intended and designed to fulfill all requirements of Wisconsin Administrative Code, Chapter A-E 5.02, U.S. Public Land Survey Monument Record (3) (a) (b) (c) (d) (e) (f) (g) (h) (i). An additional sheet may be added if necessary to conform with said requirements.

(a) Corner location: Township 33 North

Range 8 East

Town/City/Village RUSSELL

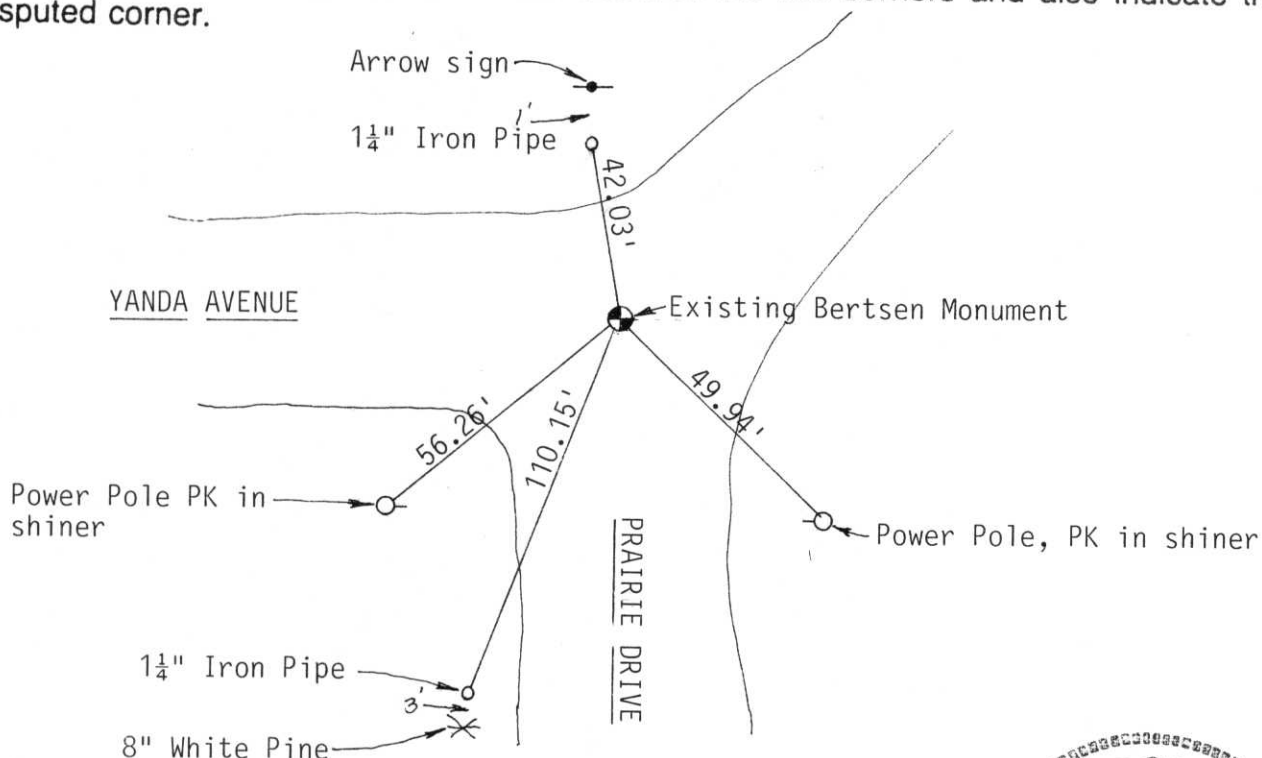
County LINCOLN



(b) (f) (g) (h) Description of monument found at this corner and if it was accepted, state all evidence (material, testimonial, occupational, plats, records, other monuments) used as a basis for accepting. If not accepted or if nothing was found, state evidence used as basis for establishing location. If reestablished through lost corner proportionate methods, indicate all monuments, distances and directions used to establish.

Corner dug for by Schwark in 1980. Found Granite Stone, 6"x6". He set Berntsen extensions over top of stone. Only 2 ties remained, I added ties after digging down 6" to undisturbed Berntsen Monument. Painted ties red.

(c) (d) (e) Plan view of corner with ties to at least 4 witness monuments. If in disagreement with previously established corner, show the distances between the two corners and also indicate the ties to the disputed corner.



(i) I, David L. Osterbrink RLS No. S-2014

(type or print name) certify that the corner location on this record was determined by me or under my direction and control and that this U.S. Public Land Survey Monument Record is correct and complete to the best of my knowledge and belief.

David L. Osterbrink
Signature

9-29-94
Date



Index No. 3-1

CERTIFIED LAND CORNER RESTORATION

Index No. A-25

State of Wisconsin }
County of Lincoln } ss.

History of original corner establishment:

Wood post set by original government surveyor.

I, Sheridan D. Schwark, do hereby certify that on the 6th day of October, 19 80, I found evidence of the Northeast corner of Section 1 Township 32, North, Range 7 East, Fourth, Principal Meridian, as described hereon; and that from this evidence I established a new monument and accessories as described hereon to perpetuate the original location of this corner.

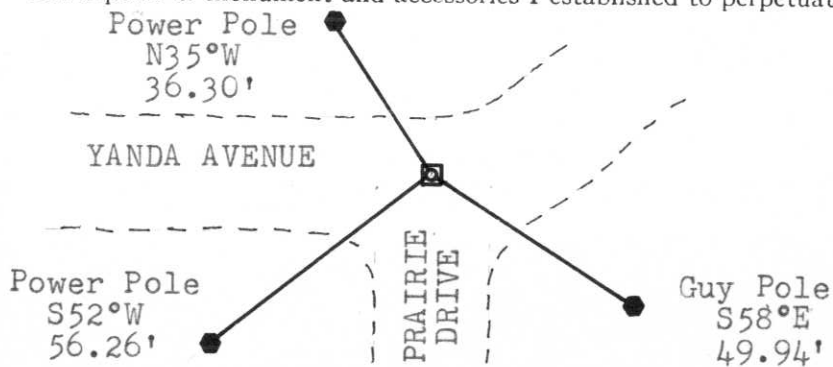
Description of corner evidence found:

We found a 6" x 6" red granite stone monument 25" below the road surface. There was also a 1" x 24" iron rod above the stone. We set 3 - 6" Lincoln County Berntsen Monument extensions with a 2" cap above the stone.

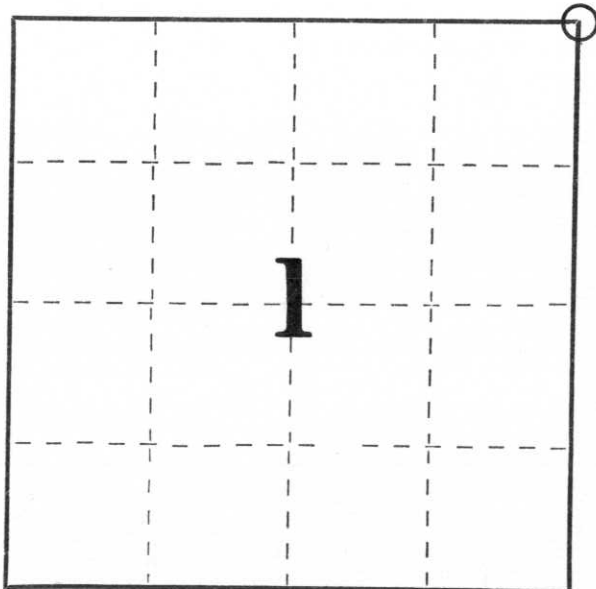
Resident witnesses:

.....
.....
.....

Description of monument and accessories I established to perpetuate the original location of this corner.



NOTE: All reference points are P.K. nails and metal discs set.



○ = Corner monument restored.

Dated at Wausau, Wis., this day of, 19 80.

Signature Sheridan D. Schwark Title Registered Land Surveyor Registration No. S-1205
(County Surveyor, Registered Land Surveyor, or other duly authorized official)

Office of Register of Deeds, County of, I hereby certify that the within instrument was filed in this office for record on the day of, 19 at o'clock M.

.....
(Register of Deeds)

By Deputy