

# Attachment to Tie Sheet S-5, T33N, R7E

43307302000

I visited the corner on 8/31/2023 to verify the corner and reference tie monumentation. I found an erroneous Iron Bar +/- 0.8' Easterly of position per the 4 ties shown on existing tie sheet filed (05/15/1997). The established Coordinates and ties agree.

Anthony R. Dallman 02/16/24

Anthony R. Dallman, PLS-2405

Lincoln County Surveyor



# U.S. PUBLIC LAND SURVEY MONUMENT RECORD

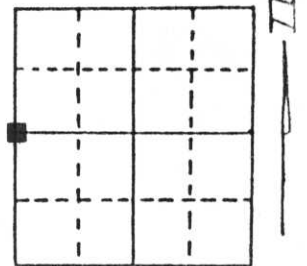
Note: This form is intended and designed to fulfill all requirements of Wisconsin Administrative Code, Chapter A-E 5.02, U.S. Public Land Survey Monument Record (3) (a) (b) (c) (d) (e) (f) (g) (h) (i). An additional sheet may be added if necessary to conform with said requirements.

(a) Corner location: Township 33 North

Range 7 East

Town/City/Village BIRCH

County LINCOLN



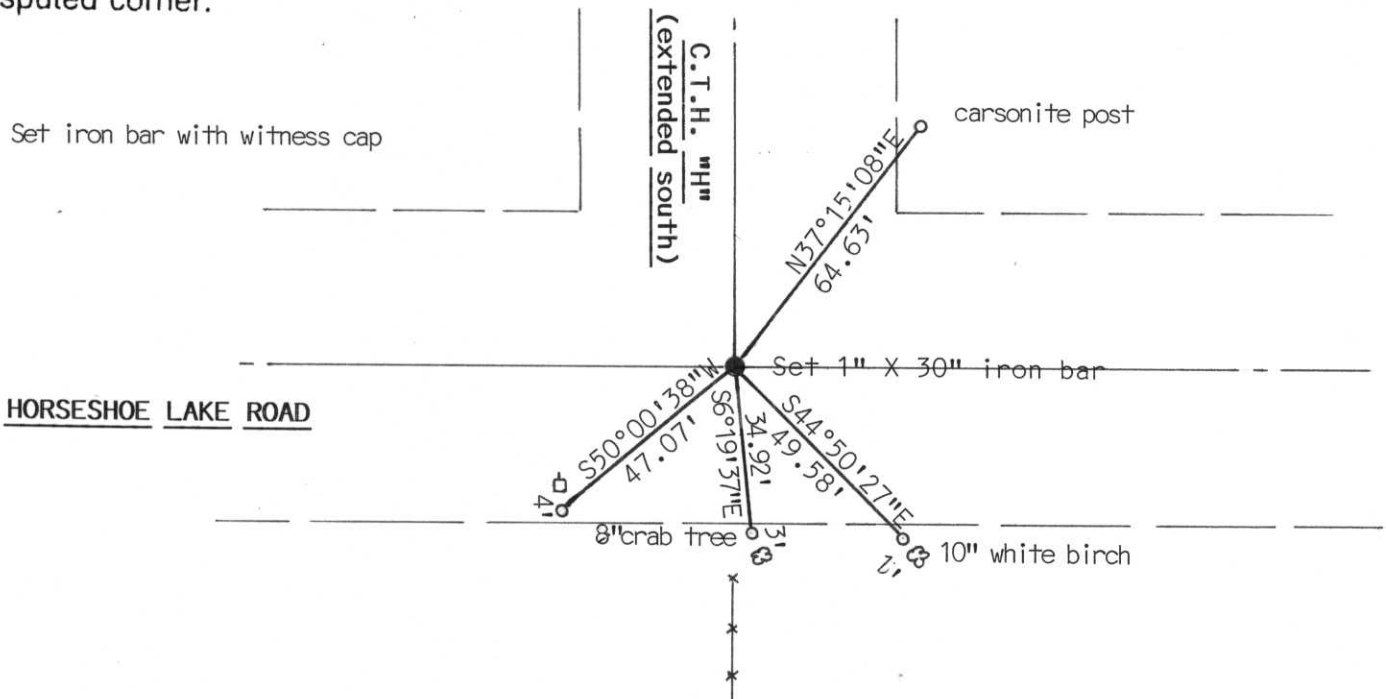
Section 29

(b) (f) (g) (h) Description of monument found at this corner and if it was accepted, state all evidence (material, testimonial, occupational, plats, records, other monuments) used as a basis for accepting. If not accepted or if nothing was found, state evidence used as basis for establishing location. If reestablished through lost corner proportionate methods, indicate all monuments, distances and directions used to establish.

Dug with backhoe 15' X 15' X 3.5' in gravel road. Found no evidence of corner.

Set Lincoln County Berntsen monument at road centerline intersection and fence line to south. Assumed this was best evidence of corner location. Included corner in Section traverse. Corner fit Section well.

(c) (d) (e) Plan view of corner with ties to at least 4 witness monuments. If in disagreement with previously established corner, show the distances between the two corners and also indicate the ties to the disputed corner.



(i) I, \_\_\_\_\_  
 (type or print name) certify that the corner location on this record was determined by me or under my direction and control and that this U.S. Public Land Survey Monument Record is correct and complete to the best of my knowledge and belief.

**RECEIVED AT LINCOLN COUNTY  
 COURTHOUSE THIS 15th DAY  
 OF May 19 97  
Pat Priebe  
**TAX DESCRIPTION OFFICE****

Index No. S-5

Signature \_\_\_\_\_

Date \_\_\_\_\_