

# U.S. PUBLIC LAND SURVEY MONUMENT RECORD

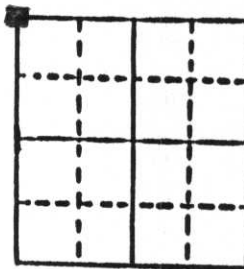
**Note:** This form is intended and designed to fulfill all requirements of Wisconsin Administrative Code, Chapter A-E 5.02, U.S. Public Land Survey Monument Record (3) (a) (b) (c) (d) (e) (f) (g) (h) (i). An additional sheet may be added if necessary to conform with said requirements.

(a) Corner location: Township 33 North

Range 7 East

Town Birch

County Lincoln



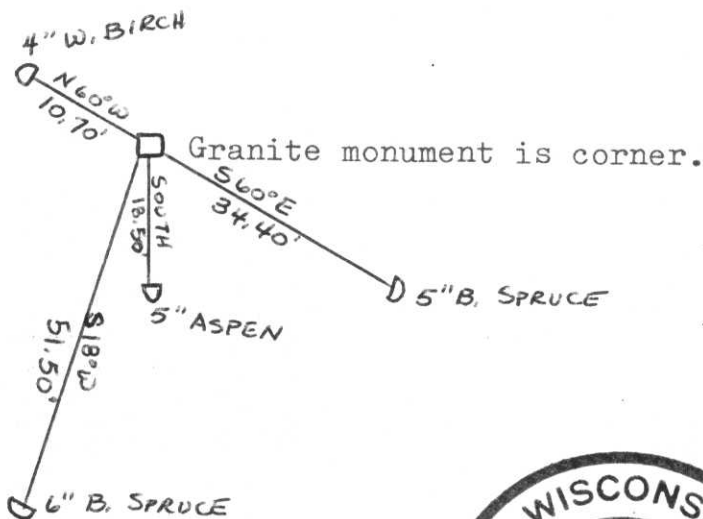
Section 32

b) (f) (g) (h) Description of monument found at this corner and if it was accepted, state all evidence (material, testimonial, occupational, plats, records, other monuments) used as a basis for accepting. If not accepted or if nothing was found, state evidence used as basis for establishing location. If reestablished through lost corner proportionate methods, indicate all monuments, distances and directions used to establish. Original Gov't. Survey: Oct. 1854 by Jackson Prentice, set wood post for corner with bearings, tamarack 10 N 48° W 25 links, pine 10 N 59° E 50 links, pine 8 S 30° E 50 links & pine 8 S 32° W 64 links. Found a 6" x 6" granite monument cor the corner in a spruce & tamarack swamp.

c) (d) (e) Plan view of corner with ties to at least 4 witness monuments. If in disagreement with previously established corner, show the distances between the two corners and also indicate the ties to the disputed corner.



RECEIVED AT LINCOLN COUNTY  
 COURTHOUSE THIS 27 DAY  
 OF Jan 1986  
 OF Lester J. Schmit  
 TAX DESCRIPTION OFFICE



(i) I, Lester J. Schmit  
 (type or print name) certify that the corner location on this record was determined by me or under my direction and control and that this U.S. Public Land Survey Monument Record is correct and complete to the best of my knowledge and belief.

Lester J. Schmit  
 Signature

8 Jan 86  
 Date

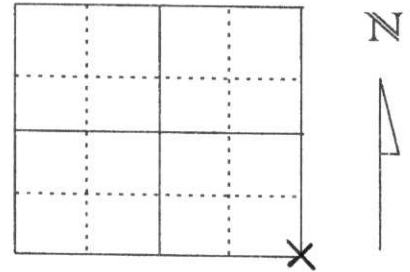


Index No. 0-5

# U.S. PUBLIC LAND SURVEY MONUMENT RECORD

Note: This form is intended and designed to fulfill all requirements of Wisconsin Administrative Code, Chapter A-E 5.02, U.S. Public Land Survey Monument Record (3) (a) (b) (c) (d) (e) (f) (g) (h) (l). An additional sheet may be added if necessary to conform with said requirements.

(a) Corner location: Township 33 North  
 Range 7 East  
 Town/City/Village BIRCH  
 County Lincoln



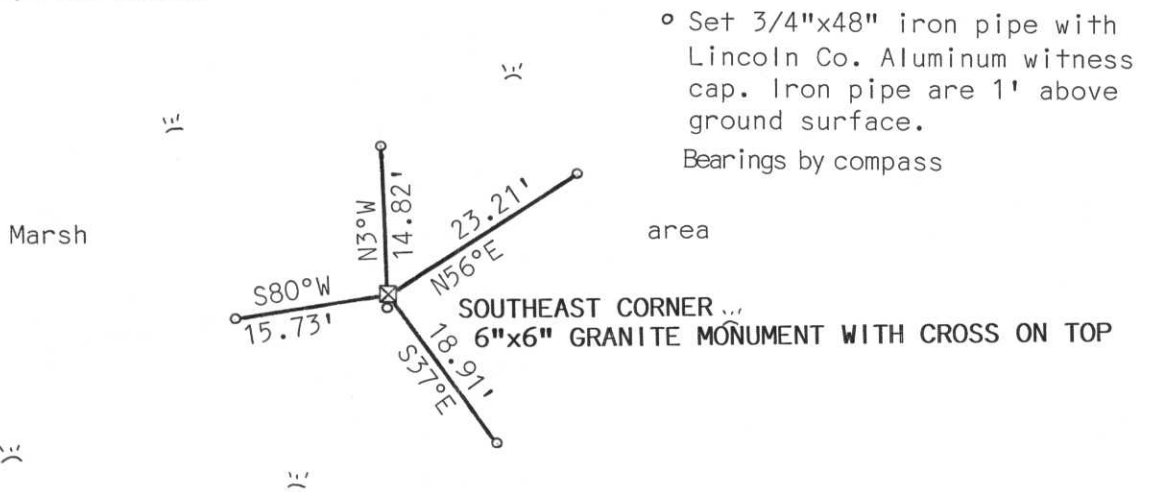
Section 30

(b) (f) (g) (h) Description of monument found at this corner and if it was accepted, state all evidence (material, testimonial, occupational, plats, records, other monuments) used as a basis for accepting. If not accepted or if nothing was found, state evidence used as basis for establishing location. If reestablished through lost corner proportionate methods, indicate all monuments, distances and directions used to establish.

6" x6" Granite Monument was found and tied out by Lester J. Schmit. We found Granite Monument with no ties remaining. Set 7/8" x 30" re-bar on south side of stone and set an Orange survey sign on north side. Then we set four new ties as shown below. Corner falls in an open marsh area.

RECEIVED AT LINCOLN COUNTY  
 COURTHOUSE THIS 23 DAY  
 OF Jan. 2001  
Tony Dallman  
 LAND INFORMATION OFFICE

(c) (d) (e) Plan view of corner with ties to at least 4 witness monuments. If in disagreement with previously established corner, show the distances between the two corners and also indicate the ties to the disputed corner.



(l) I, David J. Goslin RLS No. 2280  
 (type or print name) certify that the corner location on this record was determined by me or under my direction and control and that this U.S. Public Land Survey Monument Record is correct and complete to the best of my knowledge and belief.

David J. Goslin  
 Signature



1-19-01  
 Date

Index No. 0-5