

# U.S. PUBLIC LAND SURVEY MONUMENT RECORD

NOTE: THIS FORM IS INTENDED AND DESIGNED TO FULFILL ALL REQUIREMENTS OF WISCONSIN ADMINISTRATIVE CODE, CHAPTER A-E 7.08, U.S. PUBLIC LAND SURVEY MONUMENT RECORD (3)(a)(b)(c)(d)(e)(f)(g)(h)(i). ADDITIONAL SHEETS MAY BE NECESSARY TO CONFORM TO SAID REQUIREMENTS.

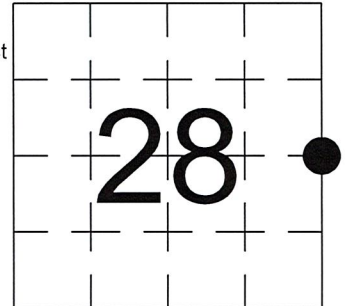
T 33 N, R 7 E

**(a) CORNER LOCATION:**

EAST QUARTER CORNER, SECTION 28  
 TOWNSHIP 33 NORTH  
 RANGE 7 EAST  
 TOWN OF BIRCH  
 LINCOLN COUNTY  
 WISCONSIN

**(b) HISTORY OF ORIGINAL CORNER:**

ORIGINAL SURVEYOR: Jackson L. Prentice, Set post  
 COMMENCING DATE: October 14, 1854  
 COMPLETION DATE: October 26, 1854  
 ORIGINAL BEARING TREES:  
 20" Pine; N 70° E; 211 links  
 14" Pine; N 80° W; 300 links

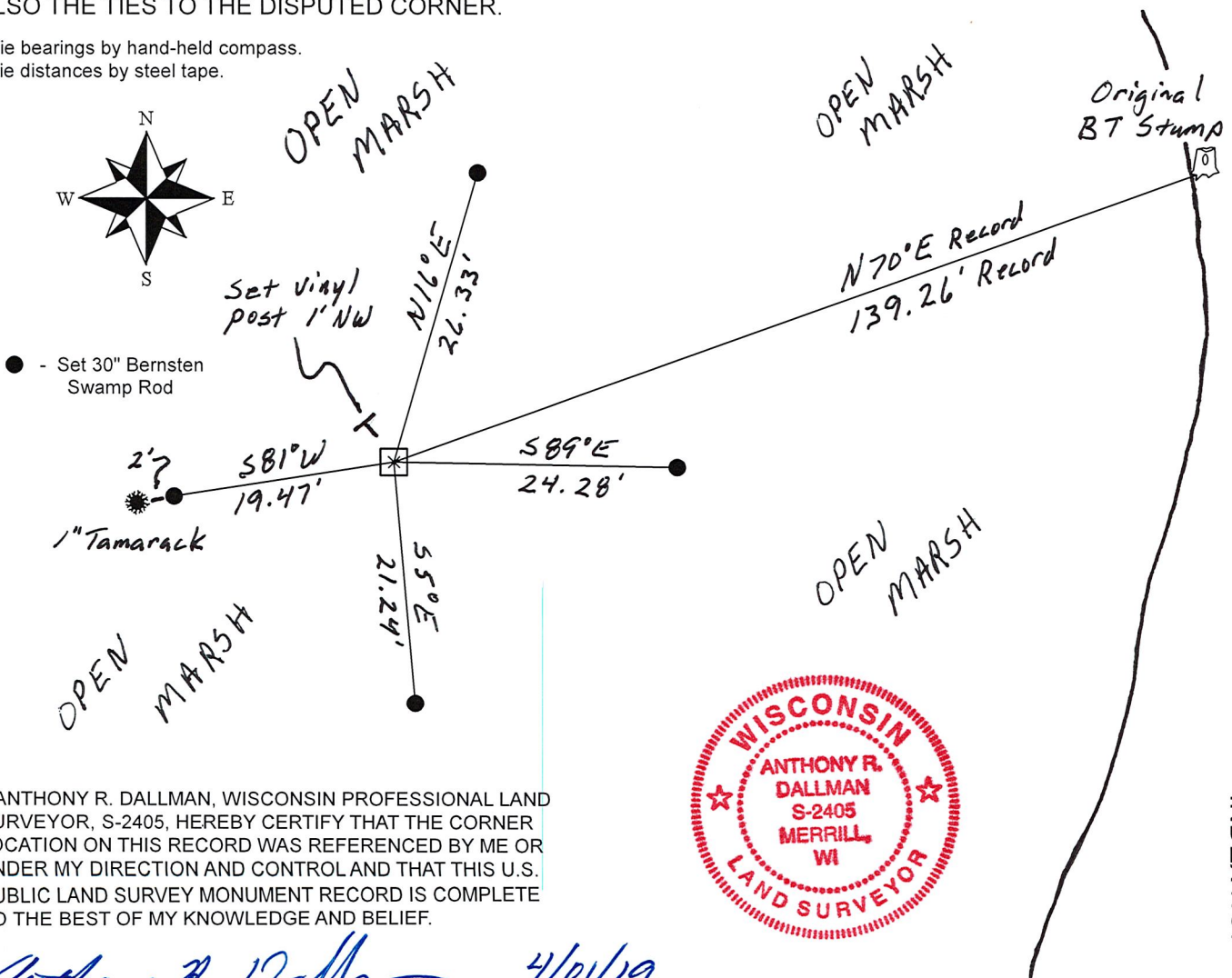


**(f)(g)(h) DESCRIPTION OF MONUMENT FOUND AT THIS CORNER AND IF IT WAS ACCEPTED. STATE ALL EVIDENCE (MATERIAL, TESTIMONIAL, OCCUPATIONAL, PLATS, RECORDS, OTHER MONUMENTS) USED AS A BASIS FOR ESTABLISHING LOCATION. IF RE-ESTABLISHING THROUGH LOST CORNER PROPORTIONATE METHODS, INDICATE ALL MONUMENTS, DISTANCES, AND DIRECTIONS USED TO ESTABLISH. INDICATE TYPE OF MONUMENTS FOUND OR SET.**

10/16/2018, I, Anthony R. Dallman, PLS-2405, found a 6" x 6" Granite down 18" at the end of a downed fence from the East in an open cranberry marsh. I also found the original NE B.T., charred stump. I accepted this location and set reference ties to further perpetuate the corner location, as shown in the sketch below.

**(c)(d)(e) PLAN VIEW OF THE CORNER WITH TIES TO AT LEAST FOUR WITNESSES. IF IN DISAGREEMENT WITH PREVIOUSLY ESTABLISHED CORNER, SHOW THE DISTANCES BETWEEN THE TWO CORNERS AND ALSO THE TIES TO THE DISPUTED CORNER.**

- Tie bearings by hand-held compass.
- Tie distances by steel tape.



I, ANTHONY R. DALLMAN, WISCONSIN PROFESSIONAL LAND SURVEYOR, S-2405, HEREBY CERTIFY THAT THE CORNER LOCATION ON THIS RECORD WAS REFERENCED BY ME OR UNDER MY DIRECTION AND CONTROL AND THAT THIS U.S. PUBLIC LAND SURVEY MONUMENT RECORD IS COMPLETE TO THE BEST OF MY KNOWLEDGE AND BELIEF.

*Anthony R. Dallman* 4/01/19  
 ANTHONY R. DALLMAN, PLS S-2405

INDEX NO.