

CERTIFIED LAND CORNER RESTORATION

Index No. M-5

State of Wisconsin }  
County of LINCOLN } ss.

I Sheridan D. Schwark, do hereby certify that on the 26th day of November, 1983, I found evidence of the Southwest corner of Section 17 Township 33, North, Range 7 East, Fourth, Principal Meridian, as described hereon; and that from this evidence I established a new monument and accessories as described hereon to perpetuate the original location of this corner.

Resident witnesses:

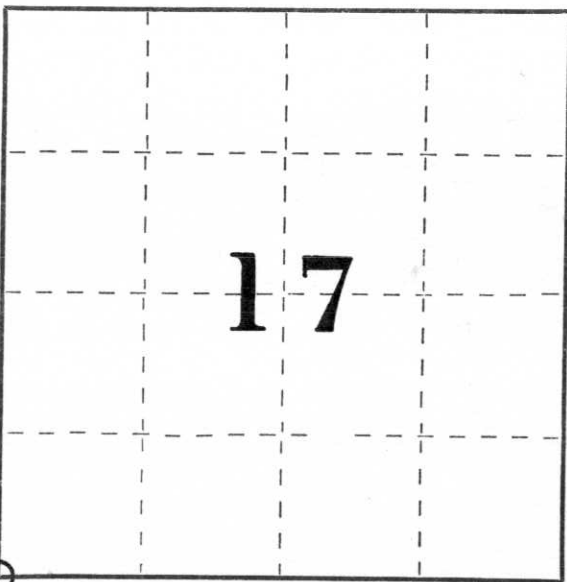
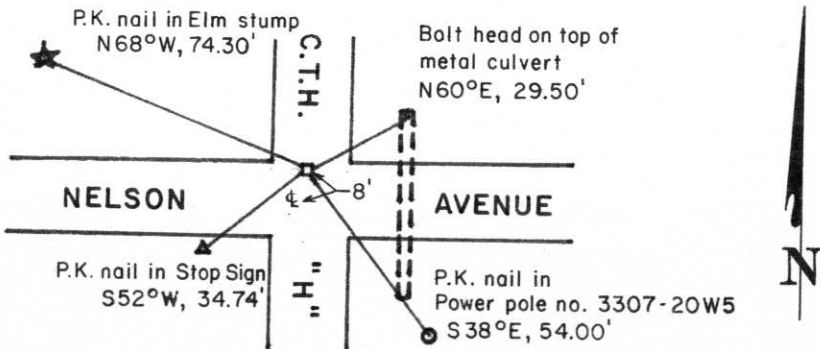
.....  
.....  
.....

History of original corner establishment:  
Wood post set by the original Government Surveyor.

Description of corner evidence found:

I found the Lincoln County Berntsen monument set by Robert H. Winat in December of 1972. The monument was covered with 2 layers of blacktop with about 6" of granite between the layers of blacktop. There was only 1 of Winat's references remaining so I established the additional reference points as shown below.

Description of monument and accessories I established to perpetuate the original location of this corner.



○ = Corner monument restored.

Dated at Merrill, Wis., this 28th day of November, 1983

Signature Sheridan D. Schwark Title Registered Land Surveyor Registration No. S-1205  
(County Surveyor, Registered Land Surveyor, or other duly authorized official)

Office of Register of Deeds, County of \_\_\_\_\_, I hereby certify that the within instrument was filed in this office for record on the \_\_\_\_\_ day of \_\_\_\_\_, 19\_\_\_\_ at \_\_\_\_\_ o'clock \_\_\_\_\_ M.

.....  
(Register of Deeds)

By \_\_\_\_\_ Deputy

M-5

3

Section Corners <sup>1817</sup> 20 T33N, R7E  
Lincoln Co. Wis.

DHDT (Lin. Co.)

11 AUG. 72

KASSON, SCHMIT

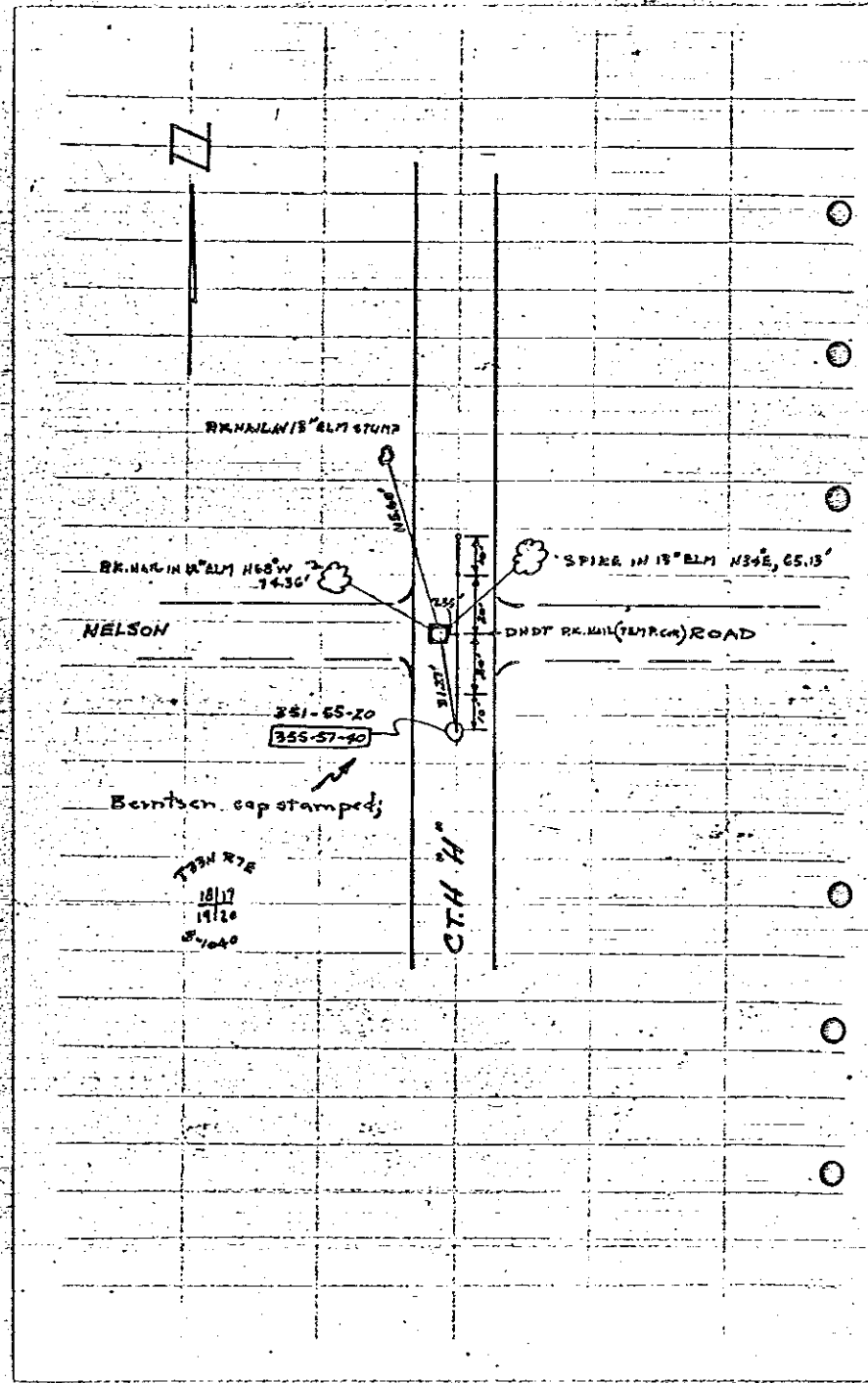
Referenced DHDT PK. MARK & TEMPORARY CORNER LOCATION. DUG WITH GRAD-ALL TO RECOVER EVIDENCE OF CORNER LOCATION. FOUND 5x5' red granite monument tipped almost horizontal. Appears to be at set location, tho! Reset vertical with 1" STEEL SHIRT ALONG SOUTH EDGE and made ties.

13 NOV. 72

MC MULLEN, SPRISTER

Set Bentsen Aluminum Monument over stone and stamped cap.

154.



Robert Winat, Northwoods Surveyor  
Copies of work done for Division  
of Hwys. Received Feb. 1973

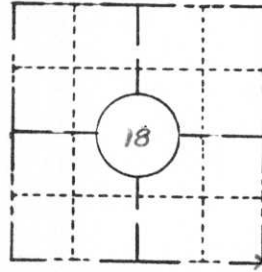
FIELD SURVEY NOTES

**PRESERVATION OF LANDMARKS**

(Pursuant to Section 59.635(7) Wisconsin Statutes

Wisconsin Department of Transportation  
E-D-707-67

COUNTY <i>Lincoln</i>		
TOWN <i>Birch</i>		
HIGHWAY <i>USH 51 FREEWAY</i>		
SECTION <i>18</i>	TOWNSHIP <i>T33 N</i>	RANGE <i>R7E</i>
TYPE OF LANDMARK <i>S.E. Section Corner</i>		



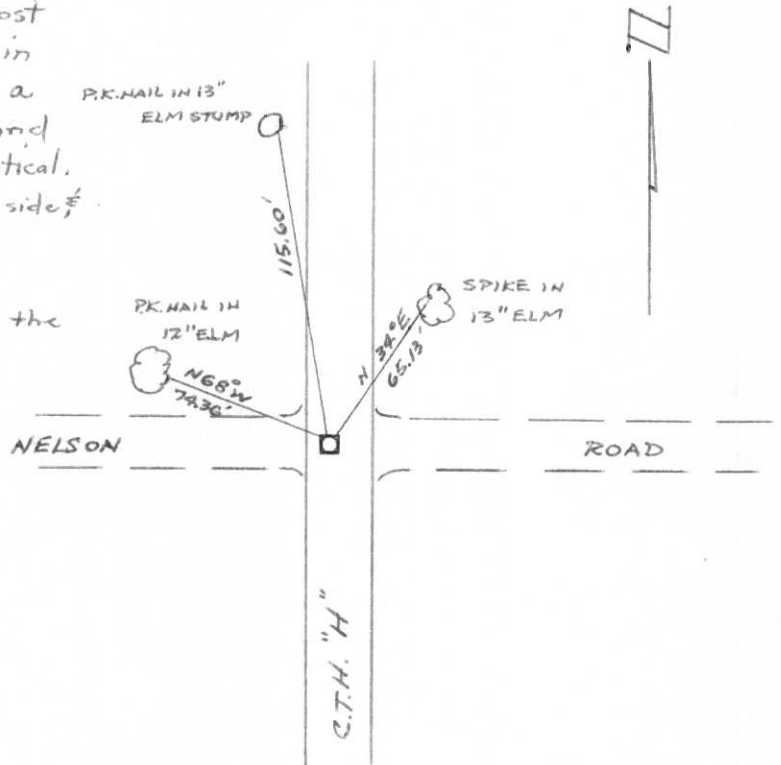
**LOCATION SKETCH**  
(Location of landmark indicated by "x")



This space for copy of field notes or ties to the above described landmarks

No evidence of the original corner post or accessories set by Jackson Prentice in October 1854 was found. However; a 0.5' sq. red granite monument was found in the road intersection and reset vertical. A 1" dia. steel shaft was set along the south side, ties were made.

Set a Berntsen Aluminum Monument over the stone monument.



FILED UNDER PROJECT <i>U.S.H. 51 FREEWAY</i>		
NUMBER I.D. <i>1173-0-02</i>		
SHC DISTRICT OFFICE NUMBER <i>7</i>	CITY <i>Tomahawk</i>	COUNTY <i>Lincoln</i>
LOCATED OR ESTABLISHED BY <i>NORTH WOODS SURVEYORS, INC.</i>		
NAME <i>Robert H. Winal</i>		
TITLE <i>Land Surveyor S-1040</i>		DATE <i>Dec. 1972</i>

COUNTY CLERK'S OFFICE	
COUNTY OF <i>Lincoln</i>	WISCONSIN } ss
DATE RECEIVED FOR RECORD <i>1/26/73</i>	DATE COPY SENT TO COUNTY SURVEYOR <input checked="" type="checkbox"/>
SIGNATURE OF COUNTY CLERK <i>Ken Oldenburg</i>	

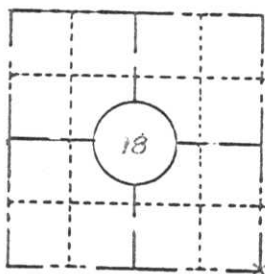
M-S

149.

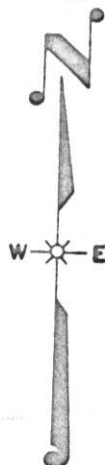
FIELD SURVEY NOTES  
**PRESERVATION OF LANDMARKS**  
 (Pursuant to Section 59.635(7) Wisconsin Statutes)

Wisconsin Department of Transportation  
 E-D-707-87

COUNTY <i>Lincoln</i>		
TOWN <i>Birch</i>		
HIGHWAY <i>USH 51 FREEWAY</i>		
SECTION <i>18</i>	TOWNSHIP <i>T33N</i>	RANGE <i>R7E</i>
TYPE OF LANDMARK <i>S.E. Section Corner</i>		



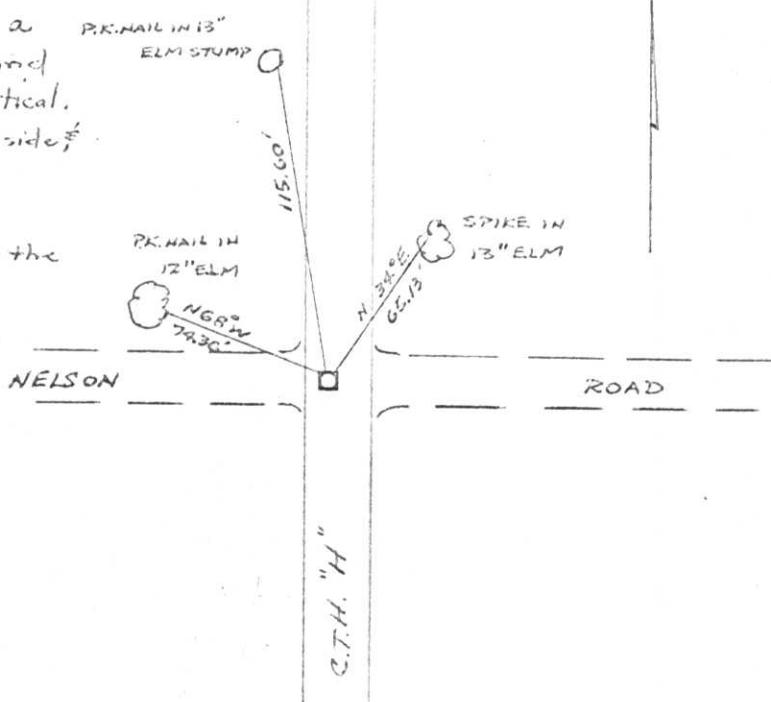
LOCATION SKETCH  
 (Location of landmark indicated by "x")



This space for copy of field notes or ties to the above described landmarks

No evidence of the original corner post or accessories set by Jackson Prentice in October 1854 was found. However; a 0.5' sq. red granite monument was found in the road intersection and reset vertical. A 1" dia. steel shaft was set along the south side of ties were made.

Set a Berntsen Aluminum Monument over the stone monument.



FILED UNDER PROJECT <i>U.S.H. 51 FREEWAY</i>		
NUMBER I.D. 173-0-02		
SHC DISTRICT OFFICE NUMBER <i>7</i>	CITY <i>Tomahawk</i>	COUNTY <i>Lincoln</i>
LOCATED OR ESTABLISHED BY <i>NORTH WOODS SURVEYORS, INC.</i>		
NAME <i>Robert H. Winal</i>		
TITLE <i>Land Surveyor S-1070</i>		DATE <i>Dec. 1972</i>

COUNTY CLERK'S OFFICE	
COUNTY OF <i>Lincoln</i>	WISCONSIN } ss
DATE RECEIVED FOR RECORD <i>1/26/73</i>	DATE COPY SENT TO COUNTY SURVEYOR <input checked="" type="checkbox"/>
SIGNATURE OF COUNTY CLERK <i>Ken Oldenberg</i>	

M-5











