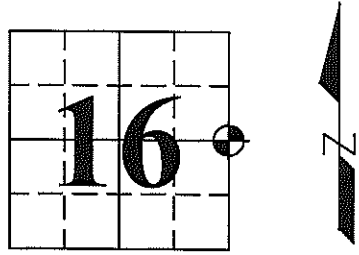


U.S. PUBLIC LAND SURVEY MONUMENT RECORD

Note: This form is intended and designed to fulfill all requirements of Wisconsin Administrative Code, Chapter A-E 7.08, U.S. Public Land Survey Monument Record (3) (a) (b) (c) (d) (e) (f) (g) (h) (i). An additional sheet may be added if necessary to conform with said requirements.

(a) Corner location: Township 33 North
 Range 7 East
 Town/~~City~~/~~Village~~ Birch
 County Lincoln

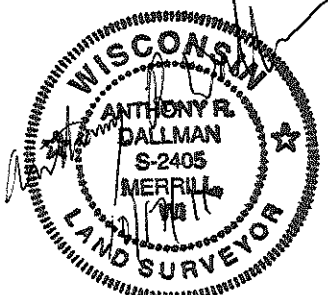


(b) (f) (g) (h) Description of monument found at this corner and if it was accepted, state all evidence (material, testimonial, occupational, plats, records, other monuments) used as a basis for accepting. If not accepted or if nothing was found, state evidence used as basis for establishing location. If reestablished through lost corner proportionate methods, indicate all monuments, distances and directions used to establish.

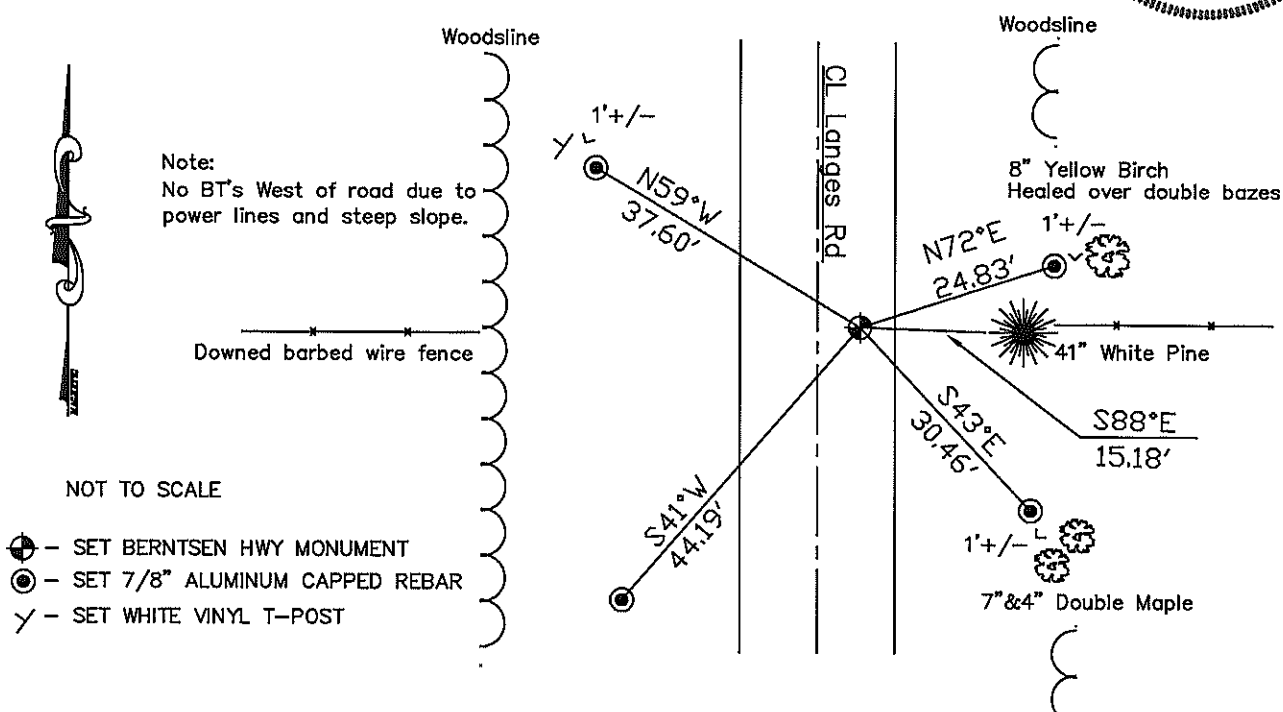
1854 - Prentice, Jackson L. set Quarter Section Post. Pine 10 S88°E 23 Links, Birch 11 N86°W 39 links.

1930's-1940's - Town of Birch was remonumented believed to be done by Francis Fox. There are no records available for this timeframe in the Town Birch, however most of the Township has granite monuments that coincide with Fox's other work.

2011 - Anthony R. Dallman found possible original Pine BT (is now 41" DBH, hollow at blaze, impossible to age) with old downed barbed wire fences running East and West in line with BT call. Found a spike down 1' at record bearing and distance from BT. Dug with Gradall across entire road width down 5'-6' deep and found nothing. Set Berntsen Hwy monument at original bearing and distance from Pine BT, 6'+/- East of CL Langes Rd, down 8". Tied as shown below:



(c) (d) (e) Plan view of corner with ties to at least 4 witness monuments. If in disagreement with previously established corner, show the distance between the two corners and also indicate the ties to the disputed corner.



(i) I, Anthony R. Dallman
 (type or print name) certify that the corner location on this record was determined by me under my direction and control and that this U.S. Public Land Survey Monument Record is correct and complete to the best of my knowledge and belief.

Anthony R. Dallman
 Signature Date 10/17/11

Index No. K-13