

U.S. PUBLIC LAND SURVEY MONUMENT RECORD

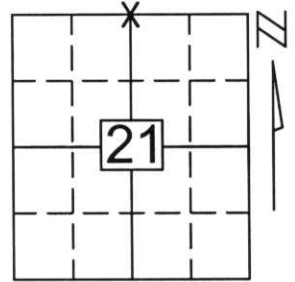
Note: This form is intended and designed to fulfill all requirements of Wisconsin Administrative Code, Chapter A-E 5.02, U.S. Public Land Survey Monument Record (3)(a)(b)(c)(d)(e)(f)(g)(h)(i). An additional sheet may be added if necessary to conform with said requirements.

(a) Corner location: Township 33 North

Range 7 East

Town/City/Village BIRCH

County LINCOLN

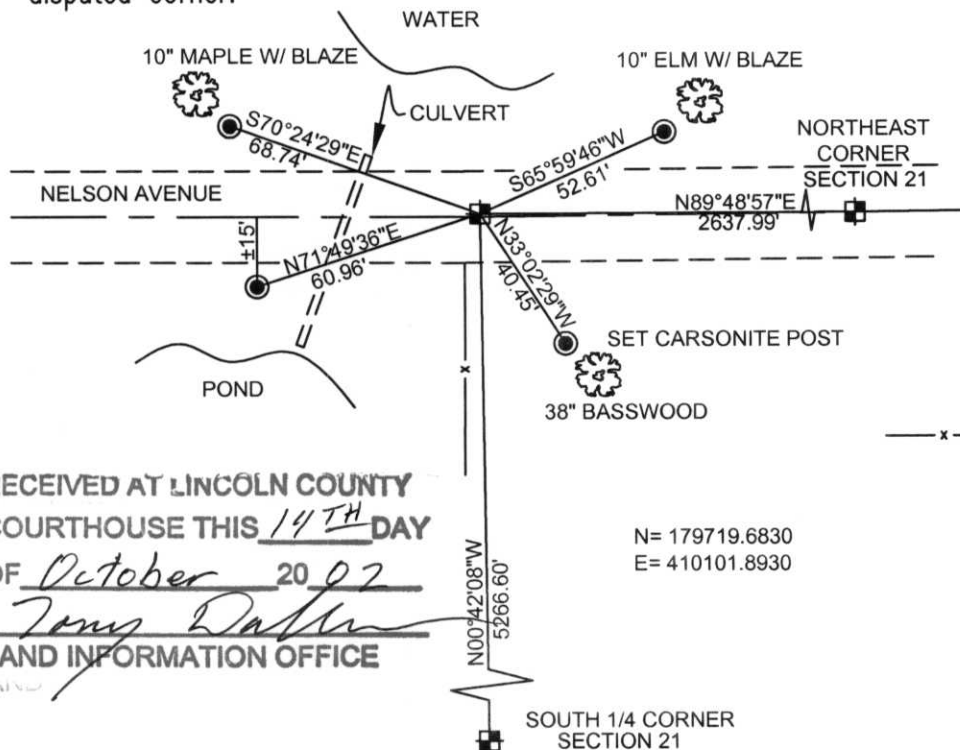


Section 21

(b)(f)(g)(h) Description of monument found at this corner and if it was accepted, state all evidence (material, testimonial, occupational, plats, records, other monuments) used as a basis for accepting. If not accepted or if nothing was found, state evidence used as basis for establishing location. If reestablished through lost corner proportionate methods, indicate all monuments, distances and directions used to establish.

WE DUG USING COUNTY SUPPLIED BACK HOE AND FOUND A 6" x 6" GRANITE STONE APPROXIMATELY 6' BELOW THE ROAD SURFACE. THE FOUND STONE WAS HELD FOR POSITION AS BEST EVIDENCE TO THE LOCATION OF THE NORTH 1/4 CORNER OF SECTION 21. THE STONE WAS REMOVED AND A BERNTSEN MONUMENT WAS RE-SET APPROXIMATELY 1' BELOW ROAD SURFACE OVER THE POSITION OF THE FOUND 6" x 6" GRANITE STONE.

(c)(d)(e) Plan view of corner with ties to at least 4 witness monuments. If in disagreement with previously established corner, show the distances between the two corners and also indicate the ties to the disputed corner.



COORDINATES ARE REFERENCED TO THE LINCOLN COUNTY COORDINATE SYSTEM AS DEVELOPED BY THE WISCONSIN DEPARTMENT OF TRANSPORTATION AND WERE DETERMINED BY GPS OBSERVATIONS ON CONTROL POINTS AS SUPPLIED BY LINCOLN COUNTY.

BEARINGS ARE REFERENCED TO LINCOLN COUNTY COORDINATE SYSTEM.

- ☐ - SECTION CORNER
- - SET 3/4" x 30" REBAR WITH LINCOLN COUNTY CAP.
- x — - EXISTING FENCE

RECEIVED AT LINCOLN COUNTY COURTHOUSE THIS 14TH DAY OF October 2002
Tommy Dabner
 LAND INFORMATION OFFICE

N= 179719.6830
 E= 410101.8930

NORTH

NOT TO SCALE



Index No. M-11

(i) I, Thomas A. Radenz, RLS certify that the corner location on this record was determined by me or under my direction and control and that this U.S. Public Land Survey Monument Record is correct and complete to the best of my knowledge and belief.

Thomas A. Radenz
 Signature _____ Date 10/7/02









