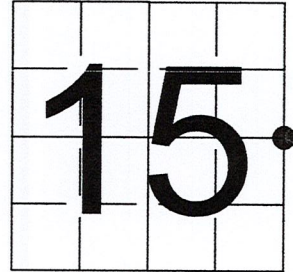


# U S PUBLIC LAND SURVEY MONUMENT RECORD

NOTE: This form is intended and designed to fulfill all requirements of Wisconsin Administrative Code, Chapter A-E 7.08 U.S. Public Land Survey Monument Record (3) (a-i)

A-E 7.08(3)(a) Identity of corner:  
 EAST 1/4 CORNER SECTION 15,  
 TOWNSHIP 33 NORTH,  
 RANGE 07 EAST OF THE 4TH PM,  
 TOWN OF BIRCH,  
 COUNTY OF LINCOLN

WISCORS - LINCOLN COUNTY  
 N: 182,372.651 USft (182,372.681)  
 E: 417,899.849 USft (417,899.810)  
 Datum: NAD83 (2011)  
 GNSS Method RTN - Direct  
 GNSS Control WISCORS VRS



The coordinate value shown has been verified by the average of two or more GPS observations at a markedly different time. Coordinates shown in parenthesis are provided by Lincoln County.

A-E 7.08(3)(b)

Original Surveyor: Jackson L. Prentice

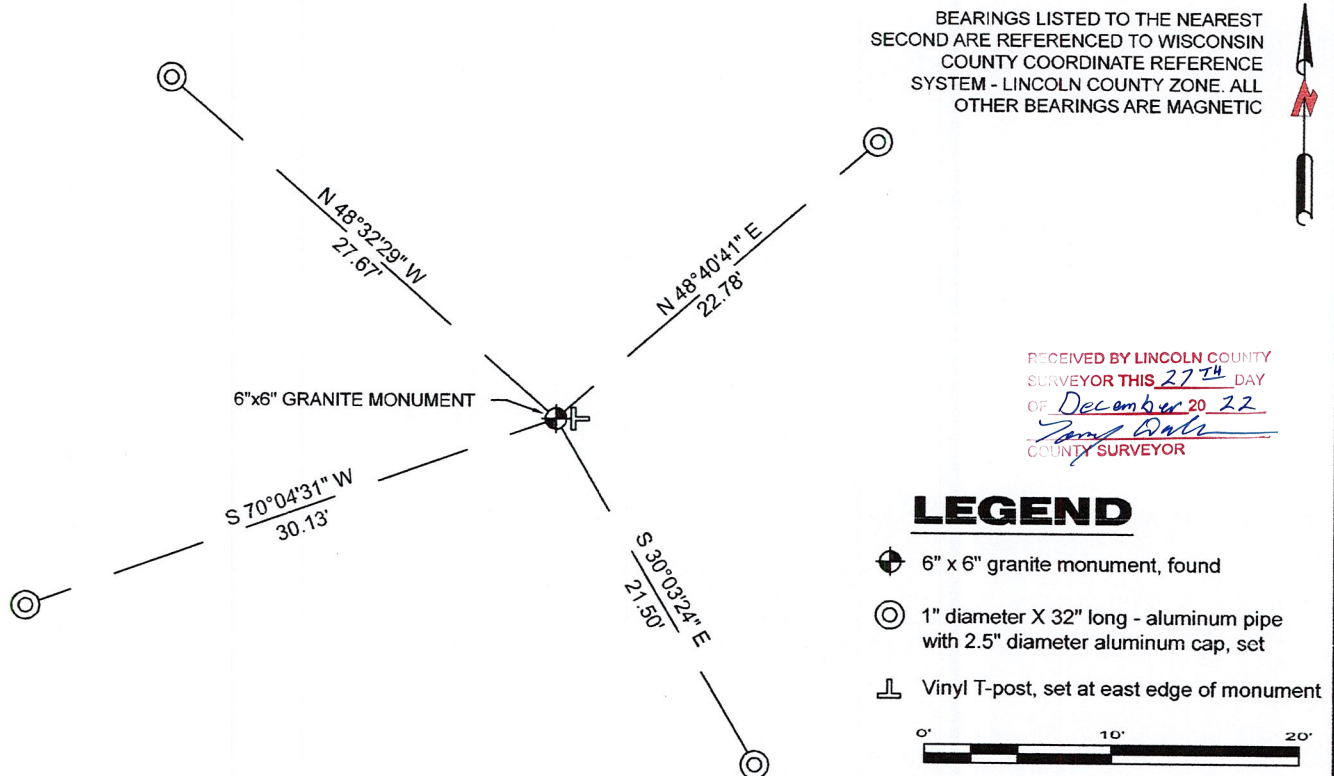
Date of Original Survey	Commenced:	October 16, 1854	Original Accessories:	
	Completed:	October 26, 1854	Tamarac	8 N 84 1/2° W 30 links
			Tamarac	10 N 61° E 11 links

1930's -1940's - Surveyor Francis Fuchs (aka Francis Fox) was known to set granite stone monuments in this area.

May 6, 2015 - Surveyor 2405 - Anthony R. Dallman - indicates this position as "found granite stone monument " on Lincoln County map S531A.

December 6, 2022 - While performing the 2022 Lincoln County PLSS Corner Remonumentation and GPS Services project, I found a 6"x 6" granite stone near the computed position provided by Lincoln County. The monument is in an open tamarack swamp and is ±6" below the water surface. Surveyor was unable to identify monument color. I established 4 new reference monuments as shown below.

A-E 7.08(3)(c)(d) Plan view of corner with references to at least 4 witness monuments.



A-E 7.08(3)(e) 1854 Surveyor set a post, 1930's - 1940's Surveyor set a granite stone monument, 2015 Surveyor found a granite stone monument. I found a 6" x 6" granite stone.

A-E 7.08(3)(f) I accept this monument as a FOUND PERPETUATED LOCATION of the corner.

A-E 7.08(3)(g)(h) This corner was not determined through lost-corner-proportionate methods.

A-E 7.08(3)(i) I, Jeffrey L. DeMuth, Professional Land Surveyor No. S-2656, hereby certify that the corner location on this record was determined by the Lincoln County Surveyor, and the monuments found or set as shown hereon were measured by me or under my direction and control, and that this U.S. Public Land Survey Monument Record is correct and complete to the best of my knowledge, and belief.

*Jeffrey L. DeMuth*  
 SIGNATURE  
 December 14, 2022  
 DATE



K-17

## REPORT

### 2022-Lincoln County PLSS Corner Remonumentation and GPS Services

Wisconsin Corner Point Identification Number: 43307152000

Surveyor: Jeffrey L. DeMuth – S2656

Corner monument: Found 6" x 6" granite stone.

Field Book: Cardinal North – Lincoln Co. Remon. – 2022-00

Page: 76

Horizontal Datum: WisCRS – Lincoln County Zone – NAD83(2011)

Date / time of initial measurement:

December 6, 2022 - Start 10:50:17 CST – End 11:07:24 CST

Reference monuments:

4 – Set - 1" diameter X 32" long aluminum pipe with 2.5" diameter Lincoln Co. aluminum cap.

#### Coordinate Table

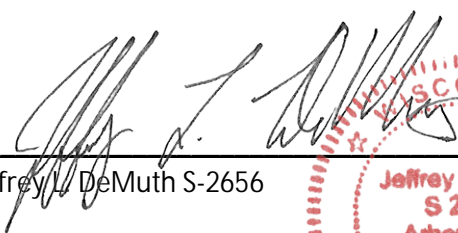
	County Provided	2022 Measurement	Difference
North	182372.681	182372.651	0.03
East	417899.810	417899.849	-0.04

Observed coordinates match with existing coordinates within reason.

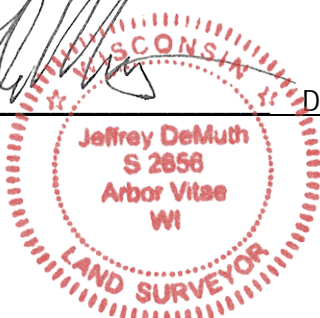
Request Data Log for more information.

Additional Notes:

Corner falls in an open tamarack swamp and is  $\pm 6"$  below the water surface. Survey or was unable to see the monument color.

  
Jeffrey L. DeMuth S-2656

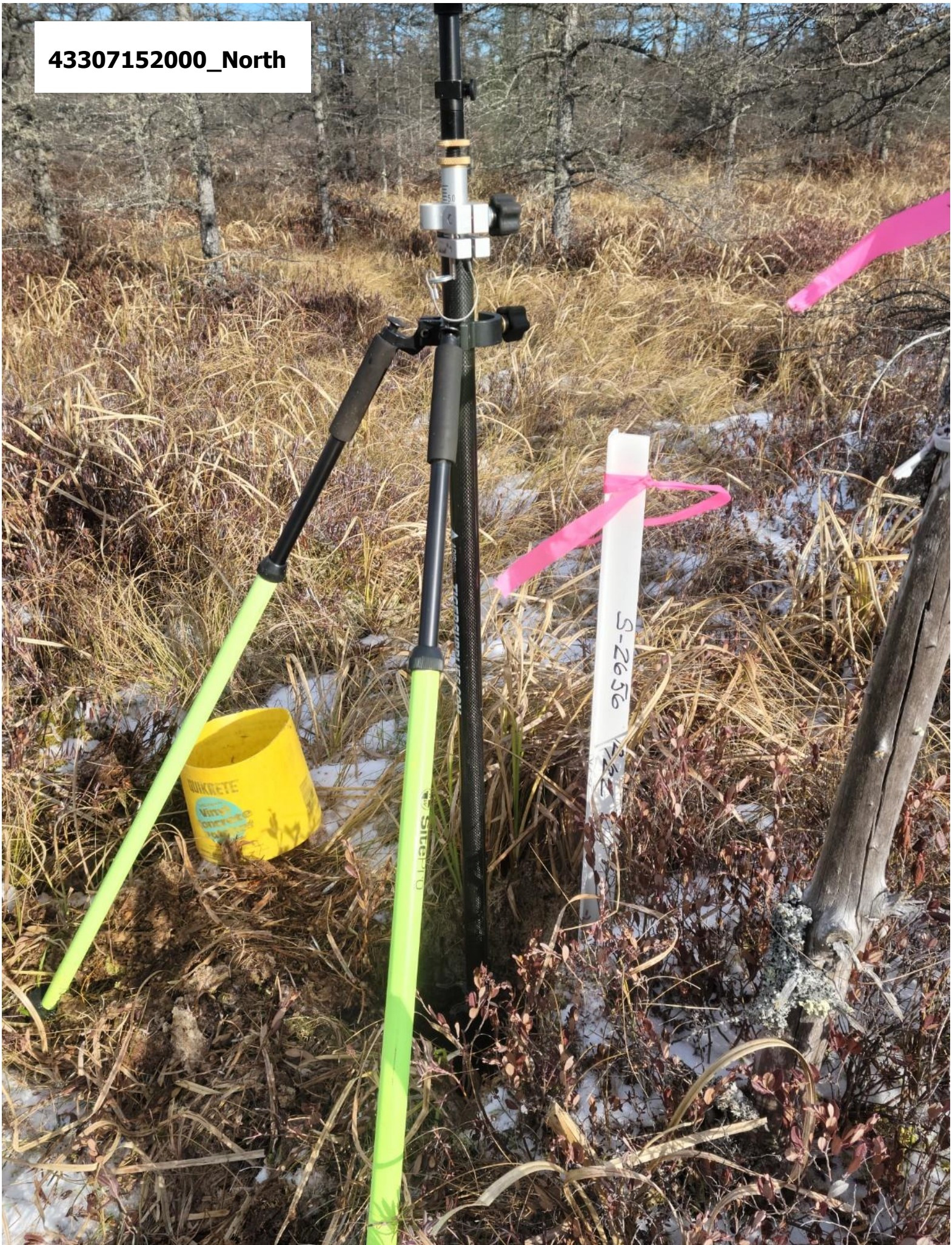
December 12, 2022  
Date



43307152000\_Mon-N



43307152000\_North



43307152000\_West



43307152000\_South



43307152000\_East

