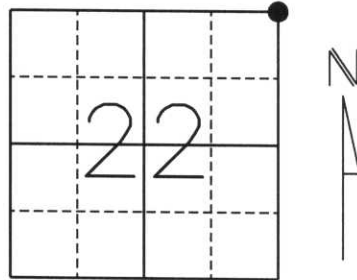


# U.S. PUBLIC LAND SURVEY MONUMENT RECORD

Note: This form is intended and designed to fulfill all requirements of Wisconsin Administrative Code, Chapter A-E 5.02, U.S. Public Land Survey Monument Record (3) (a) (b) (c) (d) (e) (f) (g) (h) (l). An additional sheet may be added if necessary to conform with said requirements.

(a) Corner location: Township 33 North  
 Range 7 East  
 Town/City/Village BIRCH  
 County Lincoln



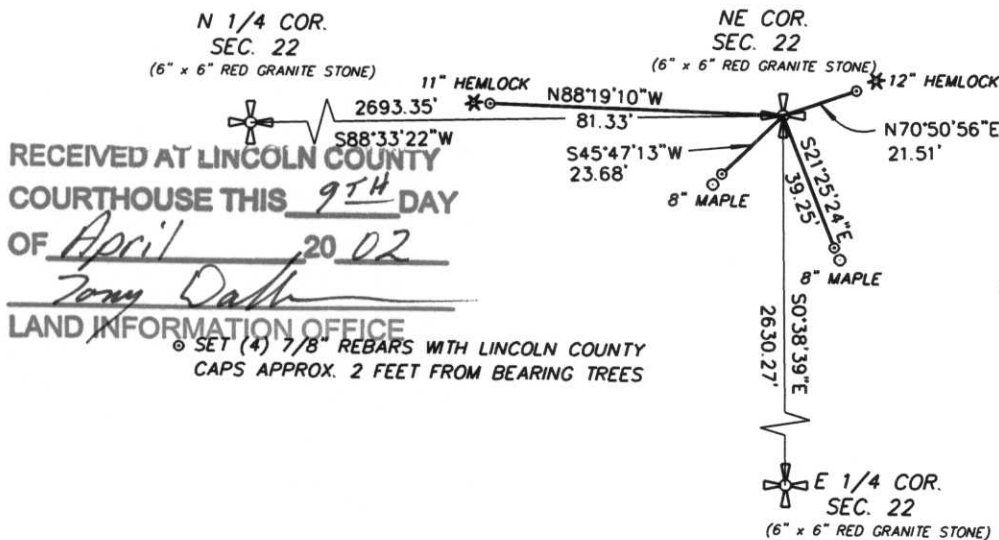
Section 22

(b) (f) (g) (h) Description of monument found at this corner and if it was accepted, state all evidence (material, testimonial, occupational, plats, records, other monuments) used as a basis for accepting. If not accepted or if nothing was found, state evidence used as a basis for establishing location. If reestablished through lost corner proportionate methods, indicate all monuments, distances and directions used to establish.

*Original survey done by Jackson L. Prentice in Oct., 1854. Set corner post with bearing trees:*  
 10" Hemlock, S36°E, 12 lks.  
 10" Hemlock, S40°W, 12 lks.  
 20" Hemlock, N87°W, 25 lks.  
 12" Birch, N18°E, 35 lks.

*Found a 6" x 6" red granite stone approx. 18" above the surface. Corner is assumed to be set by Francis X. Fox (notes are missing). Set (4) 7/8" rebars with Lincoln County caps as witness monuments approx. 2 feet from bearing trees.*

(c) (d) (e) Plan view of corner with ties to at least 4 witness monuments. If in disagreement with previously established corner, show the distances between the two corners and also indicate the ties to the disputed corner.



RECEIVED AT LINCOLN COUNTY  
 COURTHOUSE THIS 9TH DAY  
 OF April 20 02  
Tommy Dahl  
 LAND INFORMATION OFFICE  
 SET (4) 7/8" REBARS WITH LINCOLN COUNTY  
 CAPS APPROX. 2 FEET FROM BEARING TREES



(l) I, William W. Nutter RLS, S-2299  
 (type or print name) certify that the corner location on this record was determined by me or under my direction and control and that this U.S. Public Land Survey Monument Record is correct and complete to the best of my knowledge and belief.

William W. Nutter Signature 4-5-02 Date

Index No. M-17



















