

U.S. PUBLIC LAND SURVEY MONUMENT RECORD

NOTE: THIS FORM IS INTENDED AND DESIGNED TO FULFILL ALL REQUIREMENTS OF WISCONSIN ADMINISTRATIVE CODE, CHAPTER A-E 7.08, U.S. PUBLIC LAND SURVEY MONUMENT RECORD (3)(a)(b)(c)(d)(e)(f)(g)(h)(i). ADDITIONAL SHEETS MAY BE NECESSARY TO CONFORM TO SAID REQUIREMENTS.

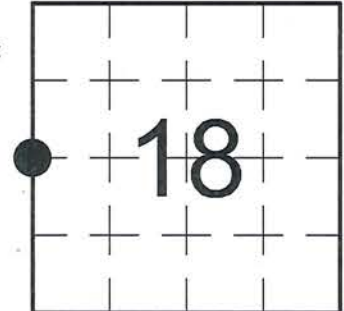
T 33 N, R 8 E

(a) CORNER LOCATION:

WEST QUARTER CORNER, SECTION 18
 TOWNSHIP 33 NORTH
 RANGE 8 EAST
 TOWN OF RUSSELL
 LINCOLN COUNTY
 WISCONSIN

(b) HISTORY OF ORIGINAL CORNER:

ORIGINAL SURVEYOR: James M. Marsh; Set Post
 COMMENCING DATE: July 29, 1851
 COMPLETION DATE: August 11, 1851
 ORIGINAL BEARING TREES:
 10" Birch; S 34° E; 22 links
 9" Birch; S 1° W; 42 links
 8" Hemlock; N 40° W; 21 links
 7" Sugar; N 50° E; 13 links



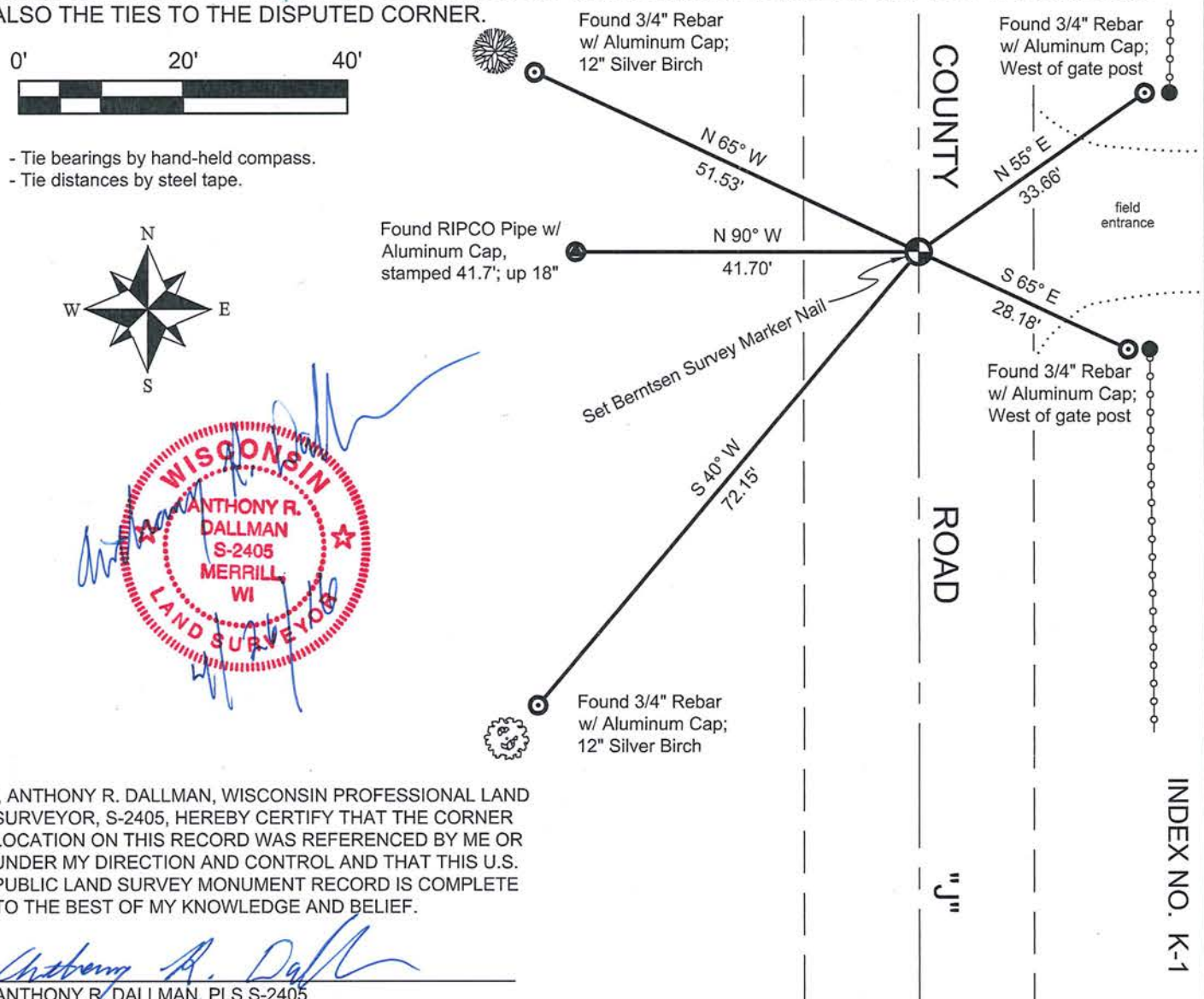
(f)(g)(h) DESCRIPTION OF MONUMENT FOUND AT THIS CORNER AND IF IT WAS ACCEPTED. STATE ALL EVIDENCE (MATERIAL, TESTIMONIAL, OCCUPATIONAL, PLATS, RECORDS, OTHER MONUMENTS) USED AS A BASIS FOR ESTABLISHING LOCATION. IF RE-ESTABLISHING THROUGH LOST CORNER PROPORTIONATE METHODS, INDICATE ALL MONUMENTS, DISTANCES, AND DIRECTIONS USED TO ESTABLISH. INDICATE TYPE OF MONUMENTS FOUND OR SET.

09/14/2004 - D. Renaud, PLS-2142, dug for corner with county Gradall while searching corner, well below existing grade and found a small piece of stone. He set a Berntsen using a "RIPCO" tie from previous survey as best available evidence. He set reference ties to perpetuate the corner location.

05/20/2015 - I, Anthony R. Dallman, PLS-2405, visited corner prior to road resurfacing. I found all existing reference ties intact, and their distances all intersecting at a common point.

11/03/2015 - I, Anthony R. Dallman, PLS-2405, set a Berntsen Survey Marker Nail at the intersection of existing reference ties as shown in the sketch below.

(c)(d)(e) PLAN VIEW OF THE CORNER WITH TIES TO AT LEAST FOUR WITNESSES. IF IN DISAGREEMENT WITH PREVIOUSLY ESTABLISHED CORNER, SHOW THE DISTANCES BETWEEN THE TWO CORNERS AND ALSO THE TIES TO THE DISPUTED CORNER.



I, ANTHONY R. DALLMAN, WISCONSIN PROFESSIONAL LAND SURVEYOR, S-2405, HEREBY CERTIFY THAT THE CORNER LOCATION ON THIS RECORD WAS REFERENCED BY ME OR UNDER MY DIRECTION AND CONTROL AND THAT THIS U.S. PUBLIC LAND SURVEY MONUMENT RECORD IS COMPLETE TO THE BEST OF MY KNOWLEDGE AND BELIEF.

Anthony R. Dallman
 ANTHONY R. DALLMAN, PLS S-2405

INDEX NO. K-1

U.S. PUBLIC LAND SURVEY MONUMENT RECORD

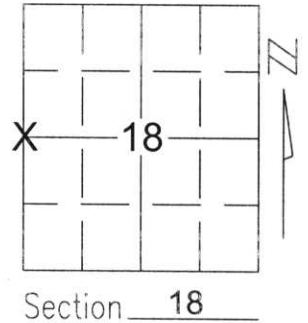
Note: This form is intended and designed to fulfill all requirements of Wisconsin Administrative Code, Chapter A-E 5.02, U.S. Public Land Survey Monument Record (3)(a)(b)(c)(d)(e)(f)(g)(h)(i). An additional sheet may be added if necessary to conform with said requirements.

(a) Corner location: Township 33 North

Range 8 East

Town/City/Village RUSSELL

County LINCOLN



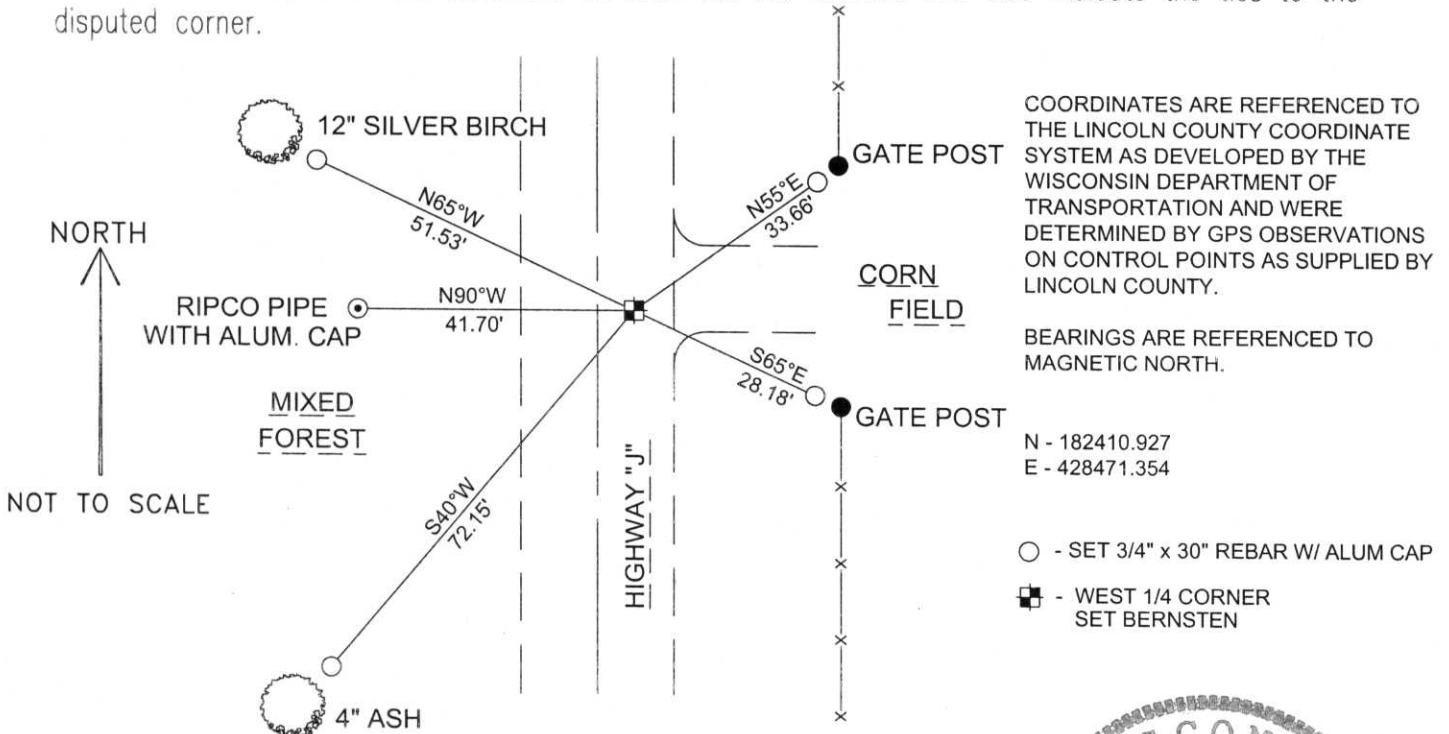
Section 18

(b)(f)(g)(h) Description of monument found at this corner and if it was accepted, state all evidence (material, testimonial, occupational, plats, records, other monuments) used as a basis for accepting. If not accepted or if nothing was found, state evidence used as basis for establishing location. If reestablished through lost corner proportionate methods, indicate all monuments, distances and directions used to establish.

SEARCHED FOR CORNER. DUG WITH COUNTY GRADALL. DUG WELL BELOW EXISTING GRADE AND FOUND A SMALL PIECE OF STONE. SET BERTSTEN USING "RIPCO" TIE FROM PREVIOUS SURVEY AS BEST AVAILABLE EVIDENCE. TIED OUT TO PERPETUATE CORNER LOCATION.

RECEIVED BY LINCOLN COUNTY
SURVEYOR THIS 16TH DAY
OF September 20 04
Tang Dahl
COUNTY SURVEYOR

(c)(d)(e) Plan view of corner with ties to at least 4 witness monuments. If in disagreement with previously established corner, show the distances between the two corners and also indicate the ties to the disputed corner.



COORDINATES ARE REFERENCED TO THE LINCOLN COUNTY COORDINATE SYSTEM AS DEVELOPED BY THE WISCONSIN DEPARTMENT OF TRANSPORTATION AND WERE DETERMINED BY GPS OBSERVATIONS ON CONTROL POINTS AS SUPPLIED BY LINCOLN COUNTY.

BEARINGS ARE REFERENCED TO MAGNETIC NORTH.

N - 182410.927
E - 428471.354

- - SET 3/4" x 30" REBAR W/ ALUM CAP
- - WEST 1/4 CORNER SET BERNSTEN

(i) I, David A. Renaud, RLS S-2142, certify that the corner location on this record was determined by me or under my direction and control and that this U.S. Public Land Survey Monument Record is correct and complete to the best of my knowledge and belief.

David Renaud 9-14-04
Signature Date



Index No. 183384

K-1