

U.S. PUBLIC LAND SURVEY MONUMENT RECORD

NOTE: THIS FORM IS INTENDED AND DESIGNED TO FULFILL ALL REQUIREMENTS OF WISCONSIN ADMINISTRATIVE CODE, CHAPTER A-E 7.08, U.S. PUBLIC LAND SURVEY MONUMENT RECORD (3)(a)(b)(c)(d)(e)(f)(g)(h)(i). ADDITIONAL SHEETS MAY BE NECESSARY TO CONFORM TO SAID REQUIREMENTS.

T 33 N, R 7 E

(a) CORNER LOCATION:

SOUTH QUARTER CORNER, SECTION 11
 TOWNSHIP 33 NORTH
 RANGE 7 EAST
 TOWN OF BIRCH
 LINCOLN COUNTY
 WISCONSIN

(b) HISTORY OF ORIGINAL CORNER:

ORIGINAL SURVEYOR: Jackson L. Prentice; Set post
 COMMENCING DATE: October 14, 1854
 COMPLETION DATE: October 26, 1854
 ORIGINAL BEARING TREES:
 10" Hemlock; N 20° E; 8 links
 11" Hemlock; S 5-1/4° W; 10 links



(f)(g)(h) DESCRIPTION OF MONUMENT FOUND AT THIS CORNER AND IF IT WAS ACCEPTED. STATE ALL EVIDENCE (MATERIAL, TESTIMONIAL, OCCUPATIONAL, PLATS, RECORDS, OTHER MONUMENTS) USED AS A BASIS FOR ESTABLISHING LOCATION. IF RE-ESTABLISHING THROUGH LOST CORNER PROPORTIONATE METHODS, INDICATE ALL MONUMENTS, DISTANCES, AND DIRECTIONS USED TO ESTABLISH. INDICATE TYPE OF MONUMENTS FOUND OR SET.

11/25/1997 - D. Higginbotham, PLS-1935, dug at the corner location with the assistance of the Lincoln County Highway Department and found no evidence of the corner. He set a Brass Capped Monument at an intersection of the centerline of County Road "J" and an existing fence line extended from the south. He set reference monuments to perpetuate the corner location.

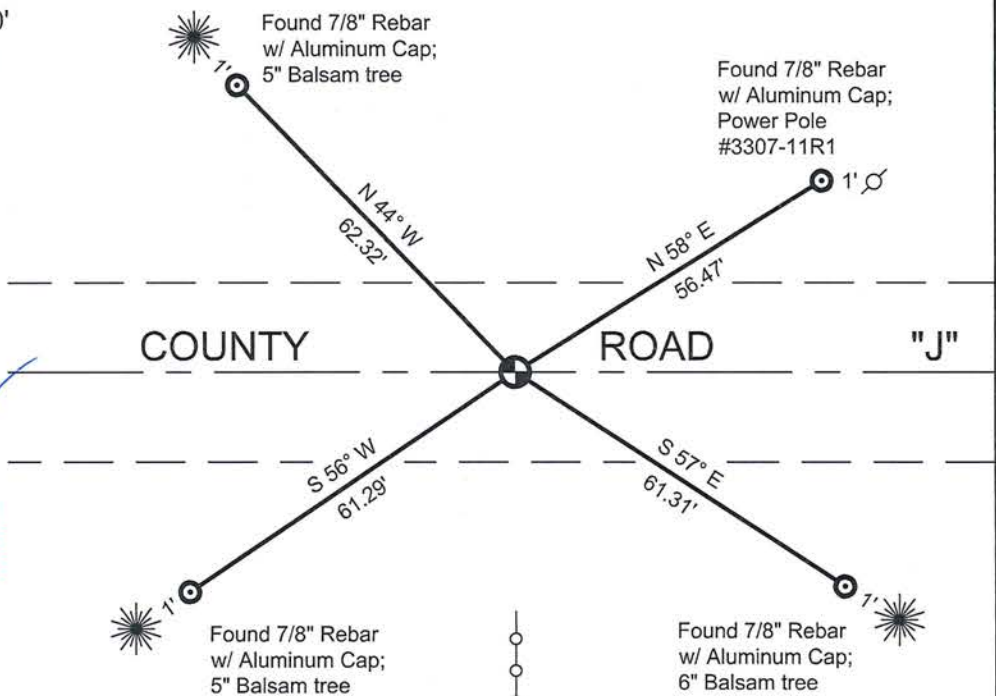
05/20/2015 - I, Anthony R. Dallman, PLS-2405, visited corner prior to road resurfacing. I found an existing Berntsen Survey Marker Nail at the corner location matching the existing reference ties found intact.

11/03/2015 - I, Anthony R. Dallman, PLS-2405, set a Berntsen Survey Marker Nail at the intersection of existing reference ties as shown in the sketch below.

(c)(d)(e) PLAN VIEW OF THE CORNER WITH TIES TO AT LEAST FOUR WITNESSES. IF IN DISAGREEMENT WITH PREVIOUSLY ESTABLISHED CORNER, SHOW THE DISTANCES BETWEEN THE TWO CORNERS AND ALSO THE TIES TO THE DISPUTED CORNER.



- Tie bearings by hand-held compass.
- Tie distances by steel tape.



I, ANTHONY R. DALLMAN, WISCONSIN PROFESSIONAL LAND SURVEYOR, S-2405, HEREBY CERTIFY THAT THE CORNER LOCATION ON THIS RECORD WAS REFERENCED BY ME OR UNDER MY DIRECTION AND CONTROL AND THAT THIS U.S. PUBLIC LAND SURVEY MONUMENT RECORD IS COMPLETE TO THE BEST OF MY KNOWLEDGE AND BELIEF.

Anthony R. Dallman
 ANTHONY R. DALLMAN, PLS S-2405

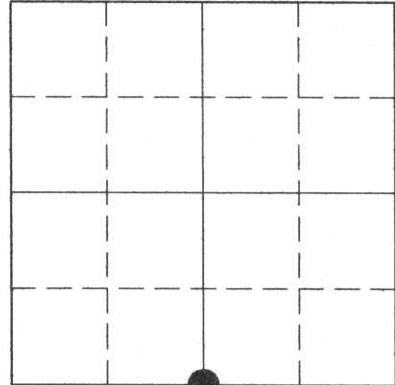
INDEX NO. 1-19

U.S. PUBLIC LAND SURVEY MONUMENT RECORD

HISTORY OF ORIGINAL CORNER ESTABLISHMENT AND SUBSEQUENT RESTORATION AND DESCRIPTION OF ANY RECORD, MONUMENT OCCUPATIONAL, TESTIMONIAL OR OTHER EVIDENCE CONSIDERED:

At this location, the Lincoln County Highway Dept. came out and assisted us in attempting to locate the South 1/4 Corner by excavating in C.T.H. J. We excavated a 12-14' East-West area along the Centerline of C.T.H. J and found no evidence of the South 1/4 Corner of Section 11. We used a found existing fenceline coming in from the South, extended its location and set a monument at the intersection of the fence to the South and Centerline of C.T.H. J.

● = LOCATION OF CORNER



SECTION 11

TOWNSHIP 33 NORTH, RANGE 7 EAST

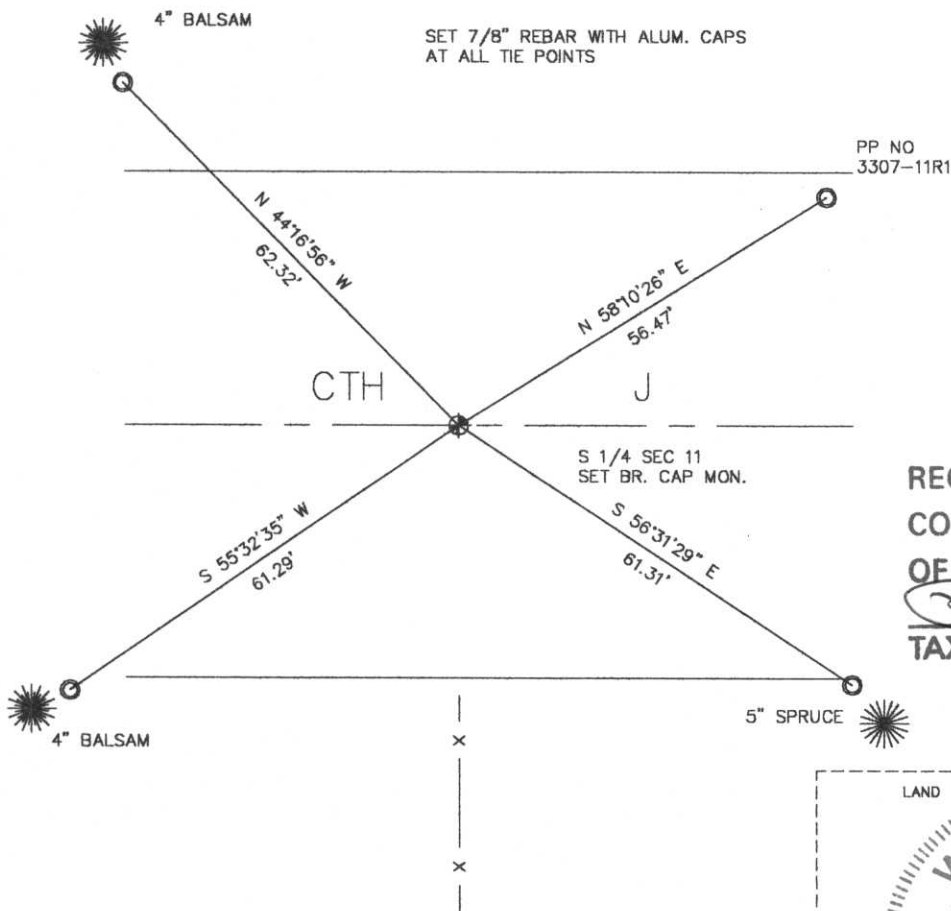
TOWN OF BIRCH

LINCOLN COUNTY, WISCONSIN

CORNER WAS: (CHECK ALL THAT APPLY)

- RESTORED THROUGH ACCEPTANCE OF AN OBLITERATED EVIDENCE LOCATION
- RESTORED THROUGH ACCEPTANCE OF A FOUND PERPETUATED LOCATION
- CONSIDERED A LOST CORNER AND REESTABLISHED THROUGH LOST CORNER PROPORTIONATE METHODS (INCLUDE A PLAN VIEW DRAWING SHOWING DISTANCES AND DIRECTIONS TO OTHER PUBLIC LAND SURVEY CORNERS USED FOR PROPORTIONING AND DETERMINING THE CORNER LOCATION)
- RESTORED OR REESTABLISHED IN A LOCATION THAT DIFFERS FROM A PREVIOUS RESTORATION OR REESTABLISHMENT (INCLUDE A PLAN VIEW DRAWING AND INDICATE WHAT WAS SET AND/OR FOUND)
- CHECK IF THERE IS ADDITIONAL INFORMATION ON BACK

DESCRIBE THE MONUMENT AND ACCESSORIES USED TO PERPETUATE THE LOCATION OF THE CORNER. (INCLUDE A PLAN VIEW DRAWING AND INDICATE WHAT WAS SET AND/OR FOUND) ALSO INCLUDE FOUR TIES TO THE SECTION CORNER AND DESCRIPTION OF THE TIES.



RECEIVED AT LINCOLN COUNTY
COURTHOUSE THIS 26 DAY
OF NOV 1997
Pat Reule
TAX DESCRIPTION OFFICE

DANIEL E. HIGGINBOTHAM

(type or print name) CERTIFY THAT THE CORNER LOCATION SHOWN ON THIS RECORD WAS DETERMINED BY ME OR UNDER MY DIRECTION AND CONTROL AND THAT THIS U.S. PUBLIC LAND SURVEY MONUMENT RECORD IS CORRECT AND COMPLETE TO THE BEST OF MY KNOWLEDGE AND BELIEF.

Dan Higginbotham
SIGNATURE

11/25/97
DATE



INDEX NO. 6-1









