

# Attachment to Tie Sheet G-13, T33N, R7E

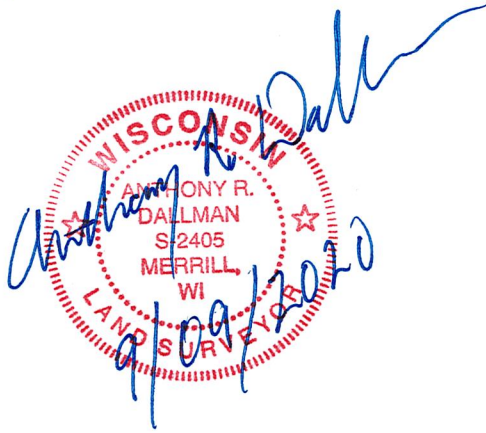
43307092000

I visited the corner on 7/09/2019 to verify the corner and reference tie monumentation. I found the 6" X 6" Granite Monument, down 28", and all 5 ties from the David Goslin tie sheet (10/26/2001). The established Coordinates and ties agree with existing monument.

*Anthony R. Dallman 9/09/2020*

Anthony R. Dallman, PLS-2405

Lincoln County Surveyor



# U.S. PUBLIC LAND SURVEY MONUMENT RECORD

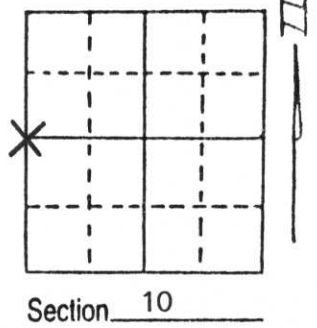
Note: This form is intended and designed to fulfill all requirements of Wisconsin Administrative Code, Chapter A-E 5.02, U.S. Public Land Survey Monument Record (3) (a) (b) (c) (d) (e) (f) (g) (h) (i). An additional sheet may be added if necessary to conform with said requirements.

(a) Corner location: Township 33 North

Range 7 East

Town/City/Village BIRCH

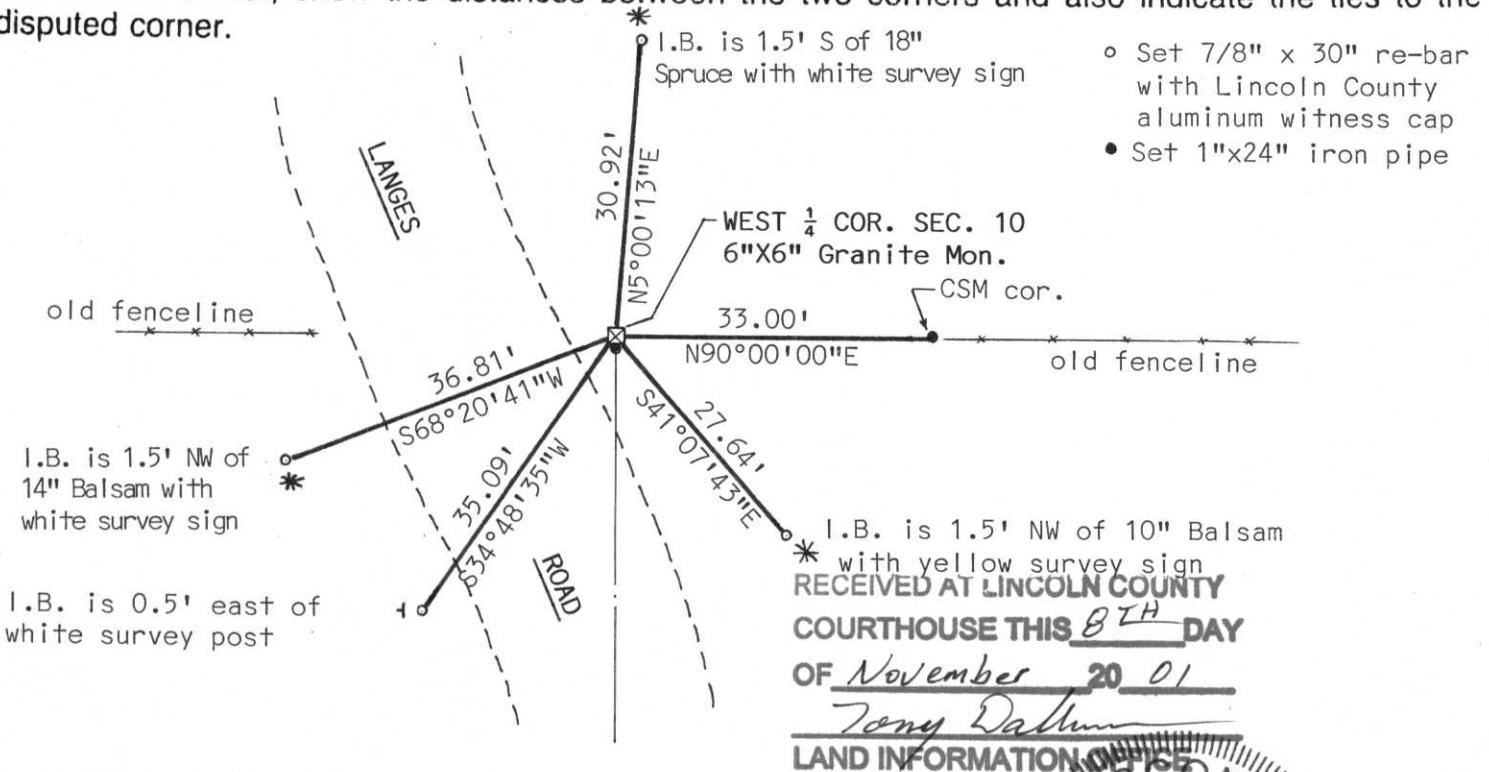
County LINCOLN



(b) (f) (g) (h) Description of monument found at this corner and if it was accepted, state all evidence (material, testimonial, occupational, plats, records, other monuments) used as a basis for accepting. If not accepted or if nothing was found, state evidence used as basis for establishing location. If reestablished through lost corner proportionate methods, indicate all monuments, distances and directions used to establish.

At this corner location we found an old fenceline running east and west of existing Langes Road. With the help of Maurice McBride we excavated in road on line with the said fencelines. We found a 6" x 6" Granite Monument 2' below ground surface. We set a 1" x 24" iron pipe on the south side of Stone and tied out as shown below.

(c) (d) (e) Plan view of corner with ties to at least 4 witness monuments. If in disagreement with previously established corner, show the distances between the two corners and also indicate the ties to the disputed corner.



(i) I, David J. Goslin RLS No. s-2280

(type or print name) certify that the corner location on this record was determined by me or under my direction and control and that this U.S. Public Land Survey Monument Record is correct and complete to the best of my knowledge and belief.

David J. Goslin 10-26-01  
Signature Date



Index No. 5-13