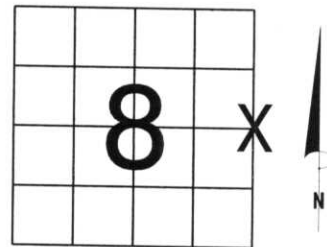


U.S. PUBLIC LAND SURVEY MONUMENT RECORD

NOTE: THIS FORM IS INTENDED AND DESIGNED TO FULFILL ALL REQUIREMENTS OF WISCONSIN ADMINISTRATIVE CODE, CHAPTER LAND SURVEY MONUMENT RECORD (3) (a) (b) (c) (d) (e) (f) (g) (h) (i). AN ADDITIONAL SHEET MAY BE ADDED IF NECESSARY TO CONFORM WITH SAID REQUIREMENTS. A-E 7.08 U.S. PUBLIC

(a) CORNER LOCATION: TOWNSHIP 33 NORTH
 RANGE 7 EAST/WEST
 TOWN/~~CITY/VILLAGE~~ BIRCH
 COUNTY LINCOLN

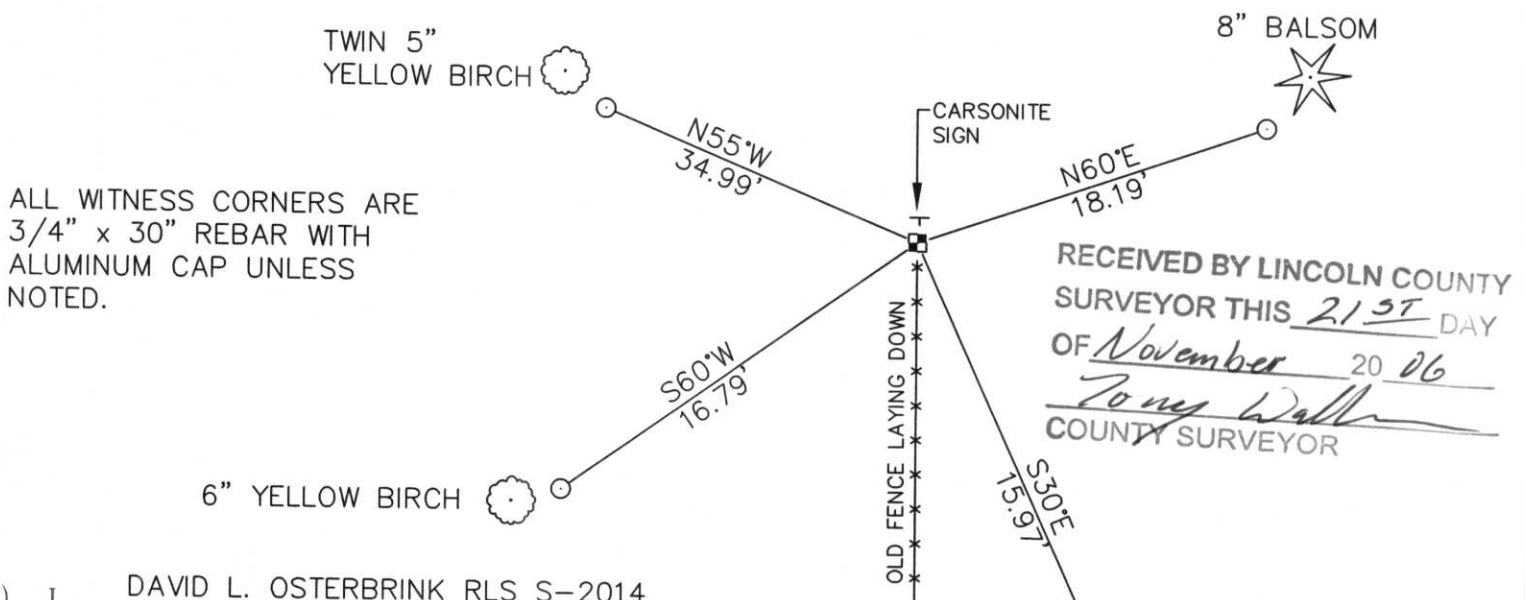


SECTION 8

(b) (f) (g) (h) DESCRIPTION OF MONUMENT FOUND AT THIS CORNER AND IF IT WAS ACCEPTED, STATE ALL EVIDENCE (MATERIAL, TESTIMONIAL, OCCUPATIONAL, PLATS, RECORDS, OTHER MONUMENTS) USED AS BASIS FOR ACCEPTING. IF NOT ACCEPTED OR IF NOTHING WAS FOUND, STATE EVIDENCE USED AS BASIS FOR ESTABLISHING LOCATION. IF REESTABLISHED THROUGH LOST CORNER PROPORTIONATE METHODS, INDICATE ALL MONUMENTS, DISTANCES AND DIRECTIONS USED TO ESTABLISH. INDICATE TYPE OF MONUMENT FOUND OR SET AND SIGN POST.

WALKED INTO SWAMP, FOUND DIFFERENT COLORED RIBBONS, GOING DIFFERENT WAYS. FOUND VERY OLD FENCE LINE, LAYING DOWN, FOLLOWED NORTH, AND FOUND 6" x 6" GRANITE MONUMENT, FLUSH WITH SWAMP. HELD AS BEST EVIDENCE FOR CORNER. THIS TOWN WAS SURVEYED BY JACKSON PRENTICE, CIRCA FALL, 1836. HIS NOTES SAY THAT HE SET A "POST". I DO NOT KNOW WHEN, OR WHO, SET THE GRANITE STONES. DISTANCES / BEARINGS WERE GOOD FOR CORNER. NEIGHBORS SAID THERE WAS A "PIPE" HERE, FOR THIS CORNER. BUT WHEN I QUESTIONED THEM, NO ONE HAD SEEN IT, EVERYONE JUST SAID THERE WAS A PIPE FOR THIS CORNER. HELD STONE FOR CORNER. TIED OUT.

(c) (d) (e) PLAN VIEW OF CORNER WITH TIES TO AT LEAST 4 WITNESS MONUMENTS. IF IN DISAGREEMENT WITH PREVIOUSLY ESTABLISHED CORNER, SHOW THE DISTANCES BETWEEN THE TWO CORNERS AND ALSO INDICATE THE TIES TO THE DISPUTED CORNER.



(i) I, DAVID L. OSTERBRINK RLS S-2014
 (TYPE OR PRINT NAME) CERTIFY THAT THE CORNER LOCATION ON THIS RECORD WAS DETERMINED BY ME OR UNDER MY DIRECTION AND CONTROL AND THAT THIS U.S. PUBLIC LAND SURVEY MONUMENT RECORD IS CORRECT AND COMPLETE TO THE BEST OF MY KNOWLEDGE AND BELIEF.

David L. Osterbrink
 SIGNATURE

11-17-06
 DATE



INDEX NO. _____