

# U.S. PUBLIC LAND SURVEY MONUMENT RECORD

NOTE: THIS FORM IS INTENDED AND DESIGNED TO FULFILL ALL REQUIREMENTS OF WISCONSIN ADMINISTRATIVE CODE, CHAPTER A-E 7.08, U.S. PUBLIC LAND SURVEY MONUMENT RECORD (3)(a)(b)(c)(d)(e)(f)(g)(h)(i). ADDITIONAL SHEETS MAY BE NECESSARY TO CONFORM TO SAID REQUIREMENTS.

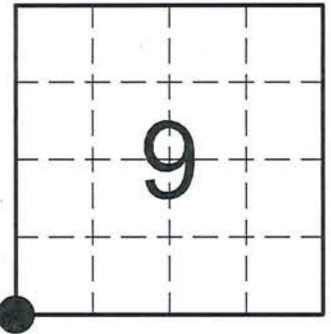
T 33 N, R 7 E

**(a) CORNER LOCATION:**

SOUTHWEST CORNER, SECTION 9  
 TOWNSHIP 33 NORTH  
 RANGE 7 EAST  
 TOWN OF BIRCH  
 LINCOLN COUNTY  
 WISCONSIN

**(b) HISTORY OF ORIGINAL CORNER:**

ORIGINAL SURVEYOR: Jackson L. Prentice; Set Post  
 COMMENCING DATE: October 14, 1854  
 COMPLETION DATE: October 26, 1854  
 ORIGINAL BEARING TREES:  
 8" Birch; S 18° E; 27 links  
 8" Hemlock; S 27° W; 15 links  
 10" Birch; N 55° W; 22 links  
 12" Birch; N 59° E; 48 links



**(f)(g)(h) DESCRIPTION OF MONUMENT FOUND AT THIS CORNER AND IF IT WAS ACCEPTED. STATE ALL EVIDENCE (MATERIAL, TESTIMONIAL, OCCUPATIONAL, PLATS, RECORDS, OTHER MONUMENTS) USED AS A BASIS FOR ESTABLISHING LOCATION. IF RE-ESTABLISHING THROUGH LOST CORNER PROPORTIONATE METHODS, INDICATE ALL MONUMENTS, DISTANCES, AND DIRECTIONS USED TO ESTABLISH. INDICATE TYPE OF MONUMENTS FOUND OR SET.**

07/2007 - M. Hoglund, PLS-1910, dug for the corner with the help of the Lincoln County Highway Department and found no evidence of the corner location. He set a Berntsen Survey Marker Nail in the centerline of County Rd. "J" on an extension of an old fence line from the south. He found existing fence lines east and west 1/4 mile that supported this corner location. He notes that a newer fence line exists to the north that lies ±10' west of the corner location. He set reference monuments to perpetuate the corner location.

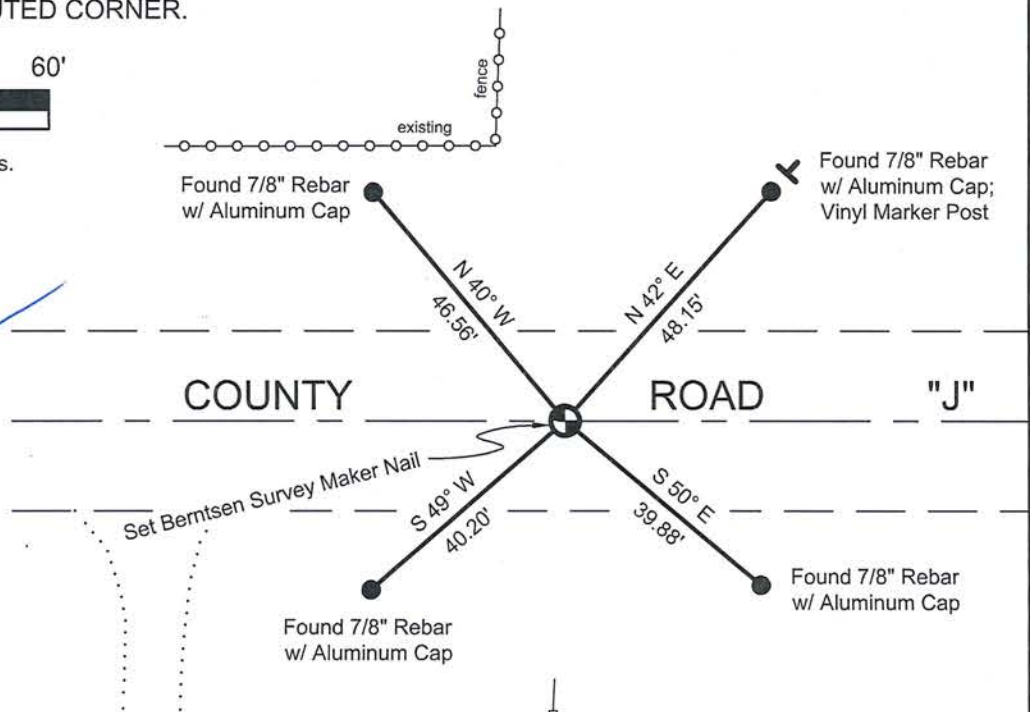
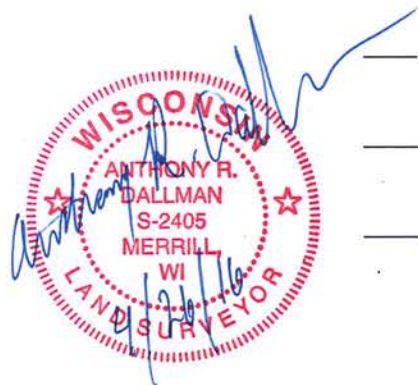
06/01/2015 - I, Anthony R. Dallman, PLS-2405, visited corner prior to road resurfacing. I found the existing Berntsen Survey Marker Nail and reference ties intact.

10/21/2015 - I, Anthony R. Dallman, PLS-2405, set a Berntsen Survey Marker Nail at the intersection of existing reference ties as shown in the sketch below.

**(c)(d)(e) PLAN VIEW OF THE CORNER WITH TIES TO AT LEAST FOUR WITNESSES. IF IN DISAGREEMENT WITH PREVIOUSLY ESTABLISHED CORNER, SHOW THE DISTANCES BETWEEN THE TWO CORNERS AND ALSO THE TIES TO THE DISPUTED CORNER.**



- Tie bearings by hand-held compass.
- Tie distances by steel tape.



I, ANTHONY R. DALLMAN, WISCONSIN PROFESSIONAL LAND SURVEYOR, S-2405, HEREBY CERTIFY THAT THE CORNER LOCATION ON THIS RECORD WAS REFERENCED BY ME OR UNDER MY DIRECTION AND CONTROL AND THAT THIS U.S. PUBLIC LAND SURVEY MONUMENT RECORD IS COMPLETE TO THE BEST OF MY KNOWLEDGE AND BELIEF.

*Anthony R. Dallman*  
 ANTHONY R. DALLMAN, PLS S-2405

INDEX NO. 1-9

# U.S. PUBLIC LAND SURVEY MONUMENT RECORD

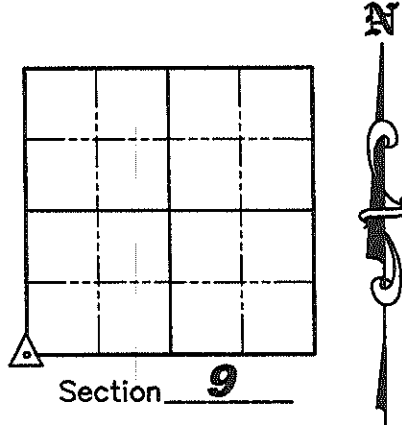
NOTE: This form is intended and designed to fulfill all requirements of Wisconsin Administrative Code, Chapter A-E 7 .08 U.S. Public Land Survey Monument Record (3)(a)(b)(c)(d)(e)(f)(g)(h)(i). An additional sheet may be added if necessary to conform with said requirements.

(a) Corner location: Township 33 North  
 Range 7 East/West

Town BIRCH

County LINCOLN

Lincoln County Coordinates  
 N 184970.428  
 E 407396.433

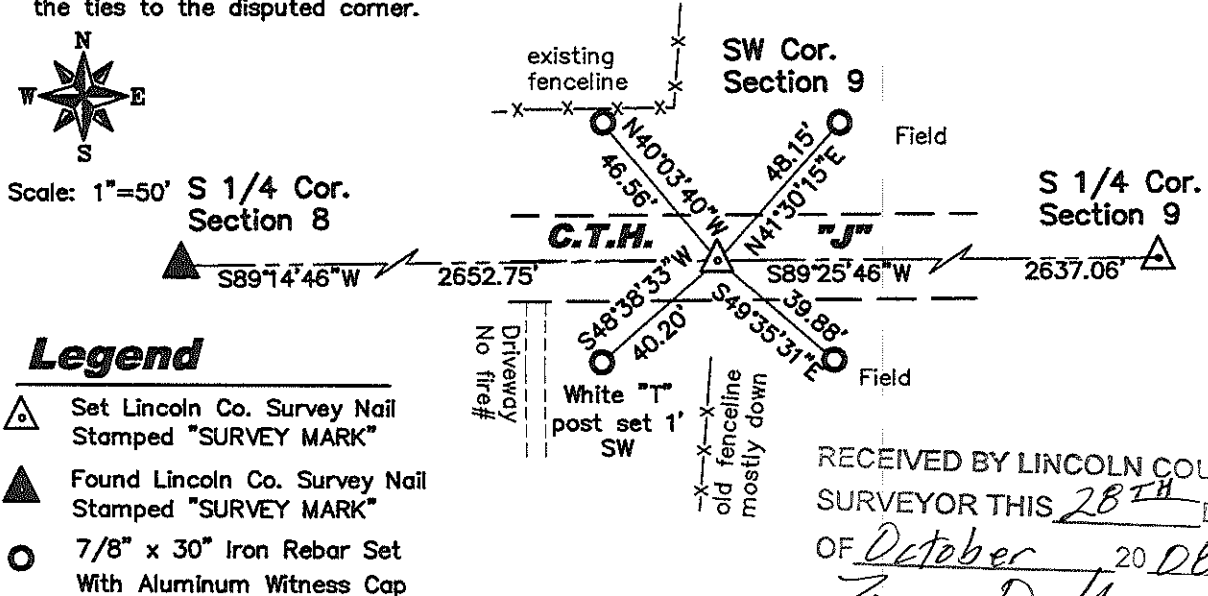


(b)(f)(g)(h) Description of monument found at this corner and if it was accepted, state all evidence (material, testimonial, occupation, plats, records, other monuments) used as a basis for accepting. If not accepted or if nothing was found, state evidence used as a basis for establishing location. If reestablished through lost corner proportionate methods, indicate all monuments, distances and directions used to establish. Indicate type of monument found or set and sign post.

October 1834— Jackson L. Prentice set wooden post for corner: BTs; 8" Birch S18°E, 27 links; 8" Hemlock S27°W, 15 links; 10" Birch N55°W, 22 links; 12" Birch N39°E, 28 links.

July 2007— Matthew E. Hoglund, S—1910, with the help of the Lincoln County Highway Department we dug for the corner, but found no evidence of the corner under the surface of the road. We set a Lincoln County Survey Nail in the centerline of County Highway "J" on the extension of an old fence line from the South. We also searched East and West 1/4 mile and found existing fence lines and they both support the location of this corner. There is also a newer fence line running North but it is approximately 10' more to the West. We set new witness corners as shown below. See Sheet 2 for photographs of evidence found.

(c)(d)(e) Plan view of corner with ties to at least 4 witness monuments. If in disagreement with previously established corner, show the distances between the two corners and also indicate the ties to the disputed corner.



RECEIVED BY LINCOLN COUNTY SURVEYOR THIS 28<sup>TH</sup> DAY OF October 2008  
*Tony Dull*  
 COUNTY SURVEYOR

(i) I, Matthew E. Hoglund, certify that the corner location on this record was determined by me under my direction and control and that this U.S. Public Land Survey Monument is correct and complete to the best of my knowledge and belief.

*Matthew E. Hoglund*  
 Signature \_\_\_\_\_ Date 10/27/08



Index No. 1-9

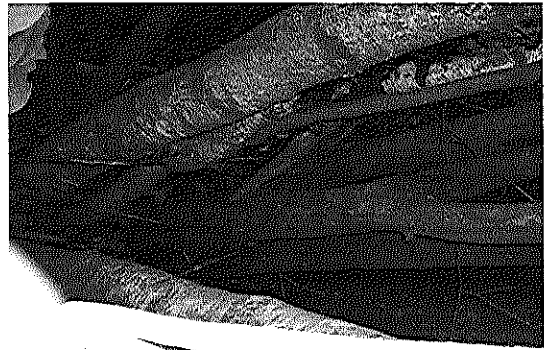
---

# ***U.S. PUBLIC LAND SURVEY MONUMENT RECORD***

---



**Dig looking West**



**Old Fence Grown Through Trees to South**



**Old Fence Grown Through Trees to South**



**Old Fence Grown Through Trees to South**



**Old Fence Grown Through Trees to South**



**Dig looking East**

Index No. 1-9