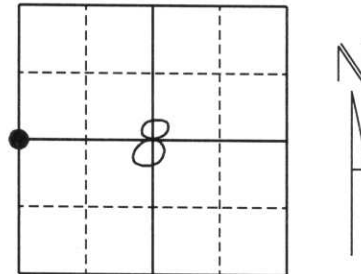


# U.S. PUBLIC LAND SURVEY MONUMENT RECORD

Note: This form is intended and designed to fulfill all requirements of Wisconsin Administrative Code, Chapter A-E 5.02, U.S. Public Land Survey Monument Record (3) (a) (b) (c) (d) (e) (f) (g) (h) (i). An additional sheet may be added if necessary to conform with said requirements.

(a) Corner location: Township 33 North  
 Range 7 East  
 Town/City/Village BIRCH  
 County Lincoln



Section 8

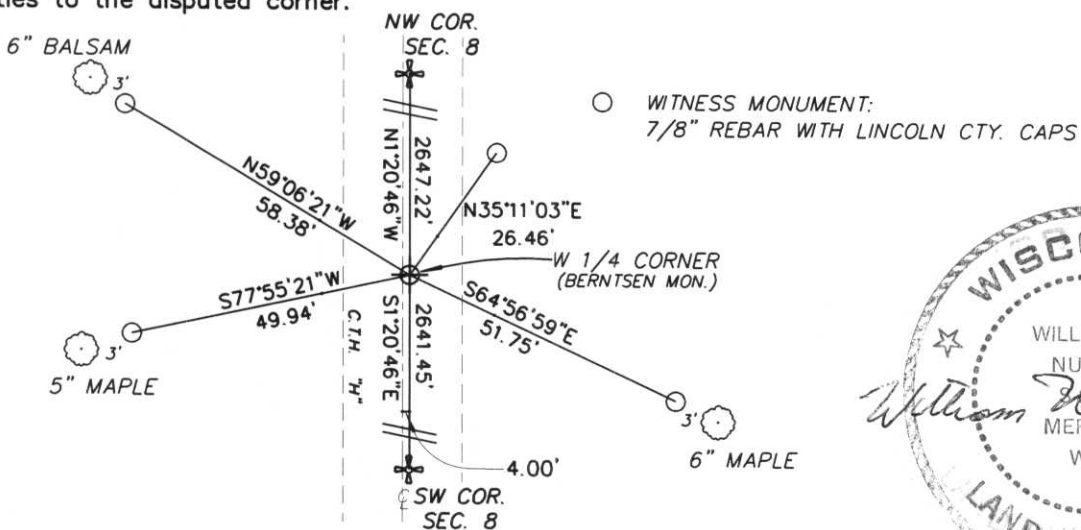
(b) (f) (g) (h) Description of monument found at this corner and if it was accepted, state all evidence (material, testimonial, occupational, plats, records, other monuments) used as a basis for accepting. If not accepted or if nothing was found, state evidence used as a basis for establishing location. If reestablished through lost corner proportionate methods, indicate all monuments, distances and directions used to establish.

*Original corner was established in Oct. 1854 by Jackson L. Prentice at 40 chains from the Southwest, with bearing trees of a 12" maple at S80° E, 5 links, and a 5" aspen at S57°W, 22 links.*

*We dug at the intersection of a fence to the West on a line between Section Corners and also at the centerline. We found nothing. We set a Berntsen Monument on line between Section Corners and fences line to the West. Tied corner to 7/8" rebar with Lincoln Cty Caps.*

RECEIVED AT LINCOLN COUNTY  
 COURTHOUSE THIS 31st DAY  
 OF May ~~2000~~ 2000  
*Tony Dallman*  
 LAND INFORMATION OFFICE

(c) (d) (e) Plan view of corner with ties to at least 4 witness monuments. If in disagreement with previously established corner, show the distances between the two corners and also indicate the ties to the disputed corner.



(i) I, William W. Nutter RLS, S-2299  
 (type or print name) certify that the corner location on this record was determined by me or under my direction and control and that this U.S. Public Land Survey Monument Record is correct and complete to the best of my knowledge and belief.

*William W. Nutter* 5-30-00  
 Signature Date

Index No.