

# U.S. PUBLIC LAND SURVEY MONUMENT RECORD

NOTE: THIS FORM IS INTENDED AND DESIGNED TO FULFILL ALL REQUIREMENTS OF WISCONSIN ADMINISTRATIVE CODE, CHAPTER A-E 7.08, U.S. PUBLIC LAND SURVEY MONUMENT RECORD (3)(a)(b)(c)(d)(e)(f)(g)(h)(i). ADDITIONAL SHEETS MAY BE NECESSARY TO CONFORM TO SAID REQUIREMENTS.

T 33 N, R 7 E

**(a) CORNER LOCATION:**

SOUTHEAST CORNER, SECTION 7  
 TOWNSHIP 33 NORTH  
 RANGE 7 EAST  
 TOWN OF birch  
 LINCOLN COUNTY  
 WISCONSIN

**(b) HISTORY OF ORIGINAL CORNER:**

ORIGINAL SURVEYOR: Jackson L. Prentice; Set Post  
 COMMENCING DATE: October 14, 1854  
 COMPLETION DATE: October 26, 1854  
 ORIGINAL BEARING TREES:  
 12" Maple; S 59° E; 60 links  
 16" Maple; N 52° W; 28 links  
 10" Birch; N 71° E; 37 links  
 16" Red Oak; S 72° W; 31 links



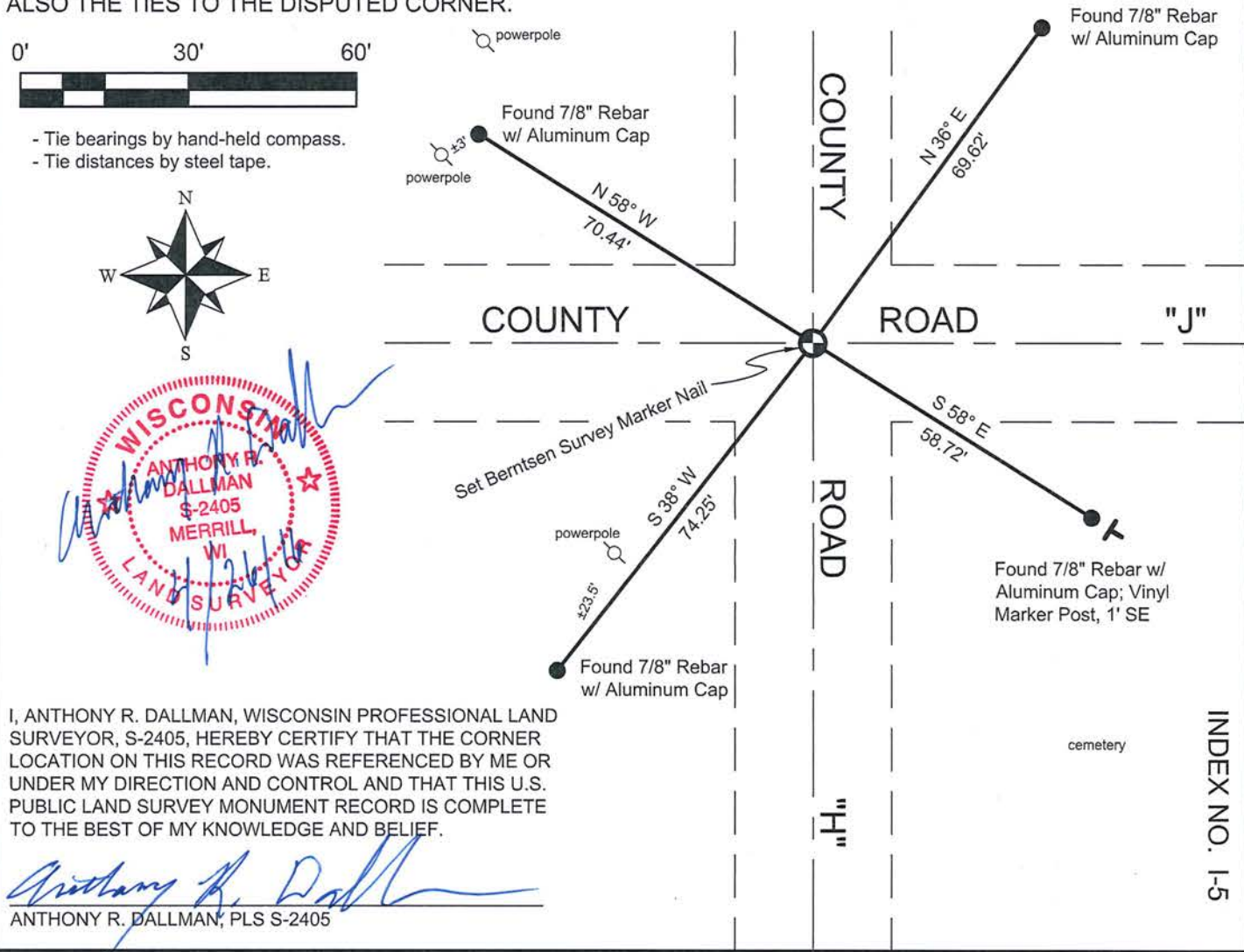
**(f)(g)(h) DESCRIPTION OF MONUMENT FOUND AT THIS CORNER AND IF IT WAS ACCEPTED. STATE ALL EVIDENCE (MATERIAL, TESTIMONIAL, OCCUPATIONAL, PLATS, RECORDS, OTHER MONUMENTS) USED AS A BASIS FOR ESTABLISHING LOCATION. IF RE-ESTABLISHING THROUGH LOST CORNER PROPORTIONATE METHODS, INDICATE ALL MONUMENTS, DISTANCES, AND DIRECTIONS USED TO ESTABLISH. INDICATE TYPE OF MONUMENTS FOUND OR SET.**

12/16/1997 - T. Radenz, PLS-2095, found a P.K. Nail at the intersection of centerlines on County Road "J" and County Road "H" which had been found and accepted on previous surveys in the area. He also accepted the P.K. Nail as the best evidence of the corner location and set reference ties to perpetuate the corner location.

06/01/2015 - I, Anthony R. Dallman, PLS-2405, visited corner prior to road resurfacing, and found no existing monumentation at the corner location. The existing reference ties were found intact and their distances intersected at a common location.

10/21/2015 - I, Anthony R. Dallman, PLS-2405, set a Berntsen Survey Marker Nail at the intersection of existing reference ties as shown in the sketch below.

**(c)(d)(e) PLAN VIEW OF THE CORNER WITH TIES TO AT LEAST FOUR WITNESSES. IF IN DISAGREEMENT WITH PREVIOUSLY ESTABLISHED CORNER, SHOW THE DISTANCES BETWEEN THE TWO CORNERS AND ALSO THE TIES TO THE DISPUTED CORNER.**



I, ANTHONY R. DALLMAN, WISCONSIN PROFESSIONAL LAND SURVEYOR, S-2405, HEREBY CERTIFY THAT THE CORNER LOCATION ON THIS RECORD WAS REFERENCED BY ME OR UNDER MY DIRECTION AND CONTROL AND THAT THIS U.S. PUBLIC LAND SURVEY MONUMENT RECORD IS COMPLETE TO THE BEST OF MY KNOWLEDGE AND BELIEF.

*Anthony R. Dallman*  
 ANTHONY R. DALLMAN, PLS S-2405

# U.S. PUBLIC LAND SURVEY MONUMENT RECORD

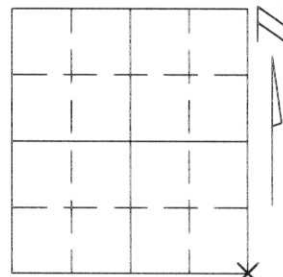
Note: This form is intended and designed to fulfill all requirements of Wisconsin Administrative Code, Chapter A-E 5.02, U.S. Public Land Survey Monument Record (3)(a)(b)(c)(d)(e)(f)(g)(h)(i). An additional sheet may be added if necessary to conform with said requirements.

(a) Corner location: Township 33 North

Range 7 East

Town/City/Village BIRCH

County LINCOLN



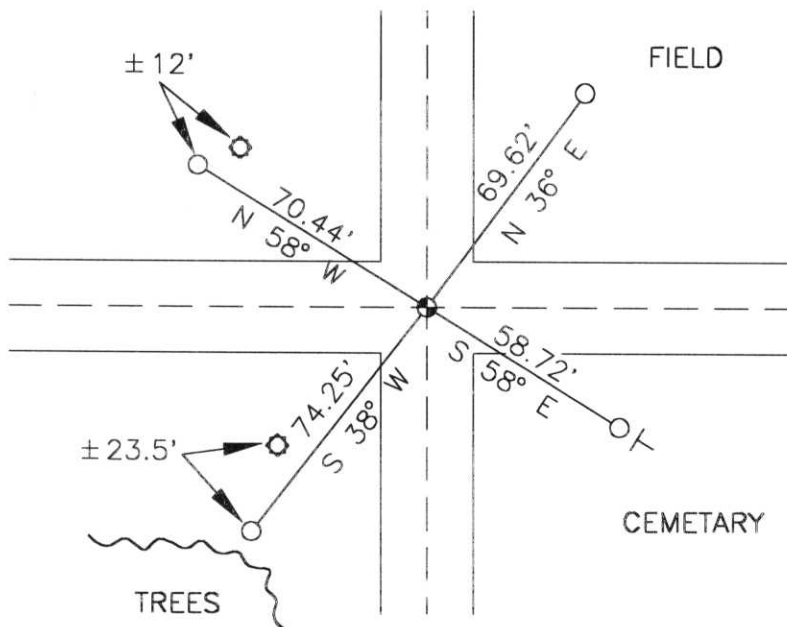
Section 7

(b)(f)(g)(h) Description of monument found at this corner and if it was accepted, state all evidence (material, testimonial, occupational, plats, records, other monuments) used as a basis for accepting. If not accepted or if nothing was found, state evidence used as basis for establishing location. If reestablished through lost corner proportionate methods, indicate all monuments, distances and directions used to establish.

I found a P.K. Nail at the intersection of the centerlines of C.T.H. "J" and C.T.H. "H" which had been accepted and used on previously recorded surveys. I accepted this P.K. nail as the best evidence of the original location of the corner.

**RECEIVED AT LINCOLN COUNTY  
COURTHOUSE THIS 17th DAY  
OF Dec. 19 97  
*Pat Priebe*  
**TAX DESCRIPTION OFFICE****

(c)(d)(e) Plan view of corner with ties to at least 4 witness monuments. If in disagreement with previously established corner, show the distances between the two corners and also indicate the ties to the disputed corner.



- - DENOTES SECTION CORNER  
FOUND P.K. NAIL
- - DENOTES SET REBAR  
W/LINCOLN CO. ALUMINUM CAP
- T - DENOTES SURVEY MARKER POST
- ⊙ - DENOTES POWER POLE

(i) I, Thomas A. Radenz R.L.S. No. 2095  
(type or print name) certify that the corner location on this record was determined by me or under my direction and control and that this U.S. Public Land Survey Monument Record is correct and complete to the best of my knowledge and belief.



*Thomas A. Radenz* 12-16-97  
Signature Date

Index No. F-5