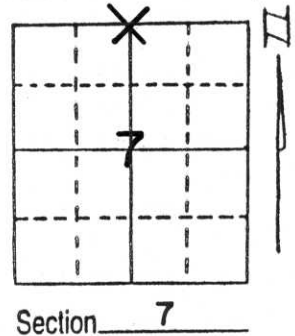


# U.S. PUBLIC LAND SURVEY MONUMENT RECORD

Note: This form is intended and designed to fulfill all requirements of Wisconsin Administrative Code, Chapter A-E 5.02, U.S. Public Land Survey Monument Record (3) (a) (b) (c) (d) (e) (f) (g) (h) (i). An additional sheet may be added if necessary to conform with said requirements.

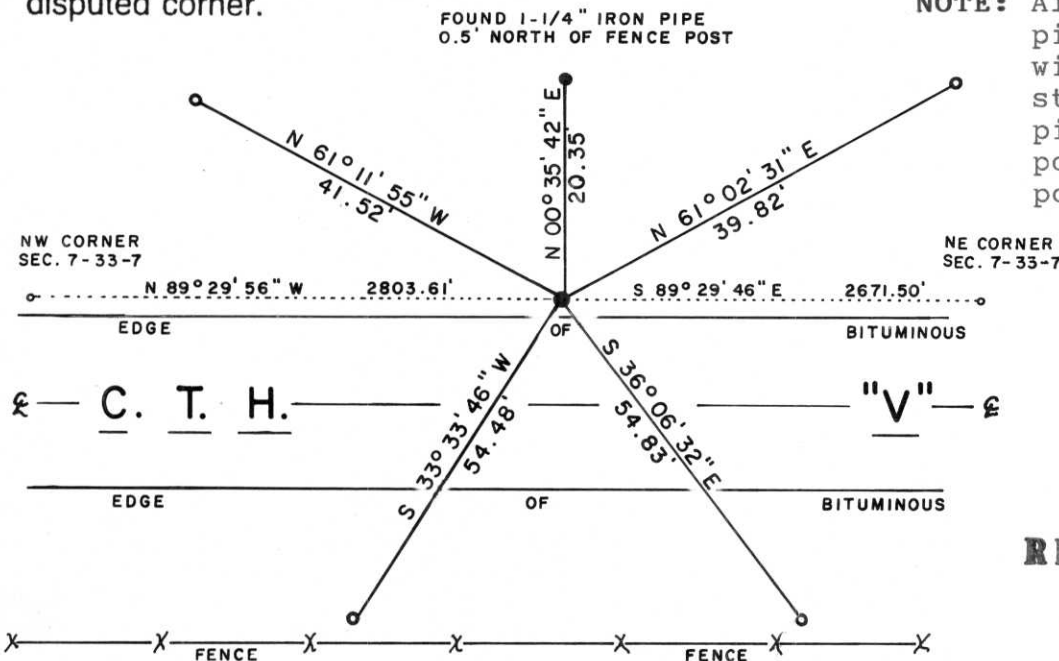
(a) Corner location: Township 33 North  
 Range 7 East/~~10~~  
 Town/~~any other~~ BIRCH  
 County LINCOLN



(b) (f) (g) (h) Description of monument found at this corner and if it was accepted, state all evidence (material, testimonial, occupational, plats, records, other monuments) used as a basis for accepting. If not accepted or if nothing was found, state evidence used as basis for establishing location. If reestablished through lost corner proportionate methods, indicate all monuments, distances and directions used to establish.

No record of this corner was found when researching records at Lincoln County surveyor's office. On this date, we recovered a 2" iron pipe 1.3' North of the North edge of bituminous roadway about 2" below surface. Traversed from Northeast corner of Section 7-33-7 to Northwest corner of said Section 7. Found 2" pipe was located at single proportionate distance between said Section corners, based on original government field notes. Subsequent research revealed pipe had been set by James Griffin in January, 1968, for private survey. Accepted 2" iron pipe as best evidence of corner location as roadway has been cut down about 15 feet and corner-stone destroyed. Replaced 2" pipe with Lincoln County standard Berntsen aluminum monument set about 3 inches below gravel shoulder.

(c) (d) (e) Plan view of corner with ties to at least 4 witness monuments. If in disagreement with previously established corner, show the distances between the two corners and also indicate the ties to the disputed corner.



NOTE: All ties to 2"x30" iron pipe with galvanized cap with chisel "X" and stamped "W.C.". Each pipe marked by location poster on metal fence post.

**RECEIVED AUG 26 1991**

(i) I, \_\_\_\_\_  
 (type or print name) certify that the corner location on this record was determined by me or under my direction and control and that this U.S. Public Land Survey Monument Record is correct and complete to the best of my knowledge and belief.

*Laverne H. Mosher*  
 Signature

AUGUST 3, 1991  
 Date



Index No. E-3