

U.S. PUBLIC LAND SURVEY MONUMENT RECORD

NOTE: This form is intended and designed to fulfill all requirements of Wisconsin Administrative Code, Chapter A-E 7 .08 U.S. Public Land Survey Monument Record (3)(a)(b)(c)(d)(e)(f)(g)(h)(i). An additional sheet may be added if necessary to conform with said requirements.

(a) Corner location: Township 33 North

Range 7 East

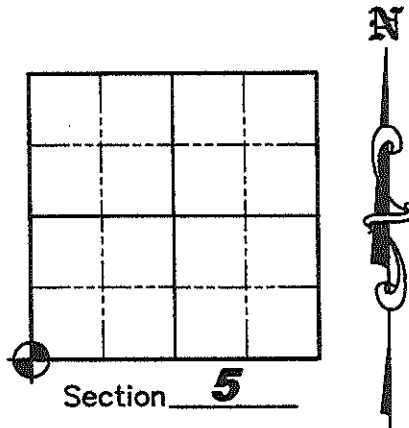
Town BIRCH

County LINCOLN

Lincoln County Coordinates

N 190216.397

E 402090.199



(b)(f)(g)(h) Description of monument found at this corner and if it was accepted, state all evidence (material, testimonial, occupation, plats, records, other monuments) used as a basis for accepting. If not accepted or if nothing was found, state evidence used as a basis for establishing location. If reestablished through lost corner proportionate methods, indicate all monuments, distances and directions used to establish. Indicate type of monument found or set and sign post.

October 1834— Jackson L. Prentice set wooden post for corner: BTs; 12" Pine N35°W, 35 links; 9" Pine N74°E, 25 links; 11" Pine S12°E, 17 links; 14" Pine S41°W, 31 links.

1972— Northwoods Surveyors set Berntsen Monument for corner.

June 1994— David L. Lemke, S-1845, found the badly decomposed remains of the Berntsen Monument and a P.K. nail in power pole #3307-6R9 distance checked. No other ties remained. He reset a 2" iron bar for corner. Witnesses: House corner N27°18'18"W, 102.03'; Set P.K. nail with cap in power pole S33°23'36"E, 58.13'; Chiseled "X" on bridge wing wall S76°26'18"W, 77.43'; Chiseled "X" on bridge wing wall N70°58'24"W, 78.80'; Found P.K. nail in power pole N35°W, 51.62'.

August 2004— Eugene C. Uttech, S-1451, set a P.K. nail at corner location as shown on Certified Survey Map Number 1798, Vol. 9, Pg. 92 of Lincoln County Records.

September 2007— Matthew E. Hogle, S-1910, found and accepted a P.K. nail at the corner location and witnessed the corner as shown on sheet 2 hereof.

(c)(d)(e) Plan view of corner with ties to at least 4 witness monuments. If in disagreement with previously established corner, show the distances between the two corners and also indicate the ties to the disputed corner.

See Sheet 2 for Detail

RECEIVED BY LINCOLN COUNTY

SURVEYOR THIS 20TH DAY

OF October 20 08

Tony Dalk
COUNTY SURVEYOR

(i) I, Matthew E. Hogle, certify that the corner location on this record was determined by me under my direction and control and that this U.S. Public Land Survey Monument is correct and complete to the best of my knowledge and belief.

Signature Matthew E. Hogle Date 10/27/08

E-5
3307

U.S. PUBLIC LAND SURVEY MONUMENT RECORD

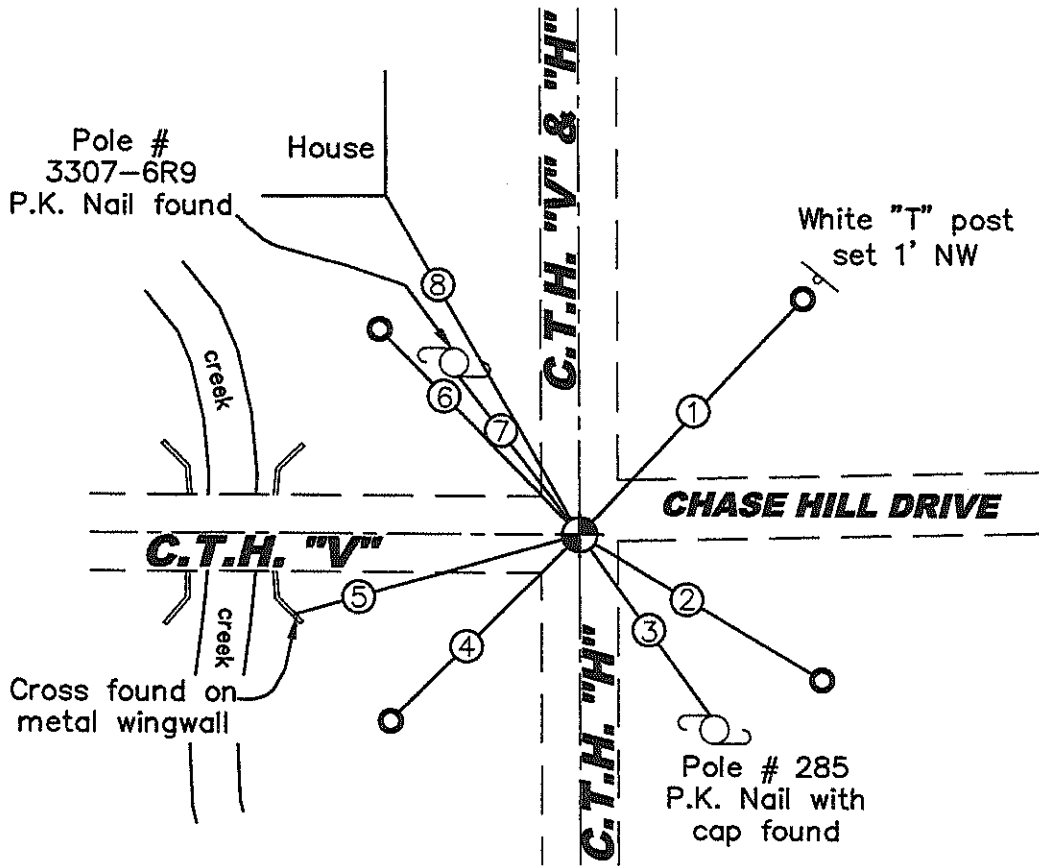


Scale: 1"=50'

- ① N43°10'36"E, 82.12'
- ② S59°11'00"E, 70.62'
- ③ S35°49'40"E, 58.23'
(S33°23'36"E, 58.13')
- ④ S45°08'22"W, 66.42'
- ⑤ S74°01'21"W, 77.30'
(S76°26'18"W, 77.43')
- ⑥ N44°18'26"W, 71.69'
(N35°W, 51.62')
- ⑦ N37°25'36"W, 51.37'
- ⑧ N29°41'12"W, 102.07'
(N27°18'18"W, 103.03')

Legend

- P.K. Nail Found
- 7/8" x 30" Iron Rebar Set
With Aluminum Witness Cap
- Power Pole
- White Tee Post Set
(123.45') Record Data



U.S. PUBLIC LAND SURVEY MONUMENT RECORD

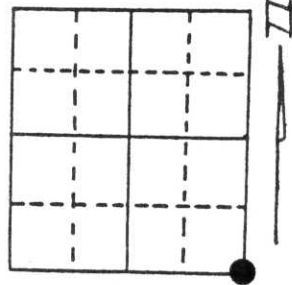
Note: This form is intended and designed to fulfill all requirements of Wisconsin Administrative Code, Chapter A-E 5.02, U.S. Public Land Survey Monument Record (3) (a) (b) (c) (d) (e) (f) (g) (h) (i). An additional sheet may be added if necessary to conform with said requirements.

(a) Corner location: Township 33 North

Range 7 East

Town/City/Village Town of Birch

County Lincoln

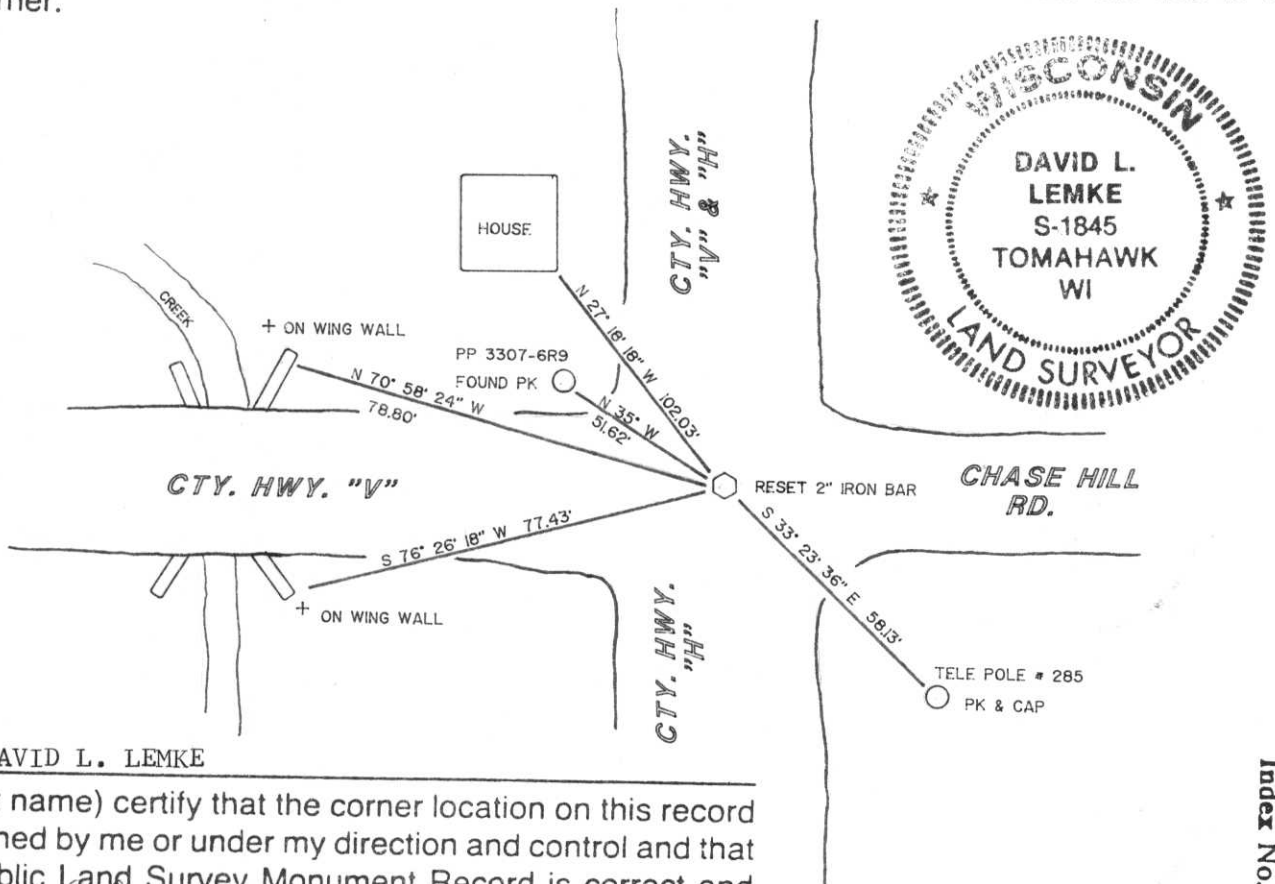


Section 6

(b) (f) (g) (h) Description of monument found at this corner and if it was accepted, state all evidence (material, testimonial, occupational, plats, records, other monuments) used as a basis for accepting. If not accepted or if nothing was found, state evidence used as basis for establishing location. If reestablished through lost corner proportionate methods, indicate all monuments, distances and directions used to establish.

FOUND BADLY DECOMPOSED REMAINS OF THE BERNTSEN MONUMENT SET BY NORTHWOODS SURVEYORS IN 1972. ALSO FOUND PK IN POWER POLE #3307-6R9 DISTANCE CHECKED. NO OTHER TIES REMAIN.

(c) (d) (e) Plan view of corner with ties to at least 4 witness monuments. If in disagreement with previously established corner, show the distances between the two corners and also indicate the ties to the disputed corner.



(i) I, DAVID L. LEMKE
 (type or print name) certify that the corner location on this record was determined by me or under my direction and control and that this U.S. Public Land Survey Monument Record is correct and complete to the best of my knowledge and belief.

David L. Lemke
 Signature

June 28, 1994

Date

Boundary Hunter

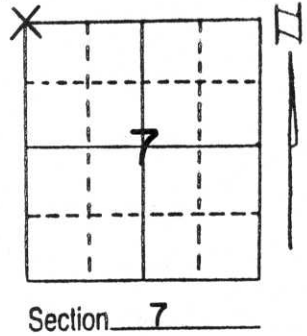
P.O. BOX 442
 TOMAHAWK, WI 54487
 715/453-7035

Index No. E-5

U.S. PUBLIC LAND SURVEY MONUMENT RECORD

Note: This form is intended and designed to fulfill all requirements of Wisconsin Administrative Code, Chapter A-E 5.02, U.S. Public Land Survey Monument Record (3) (a) (b) (c) (d) (e) (f) (g) (h) (i). An additional sheet may be added if necessary to conform with said requirements.

(a) Corner location: Township 33 North
 Range 7 East/~~West~~
 Town/~~City, Village~~ BIRCH
 County LINCOLN

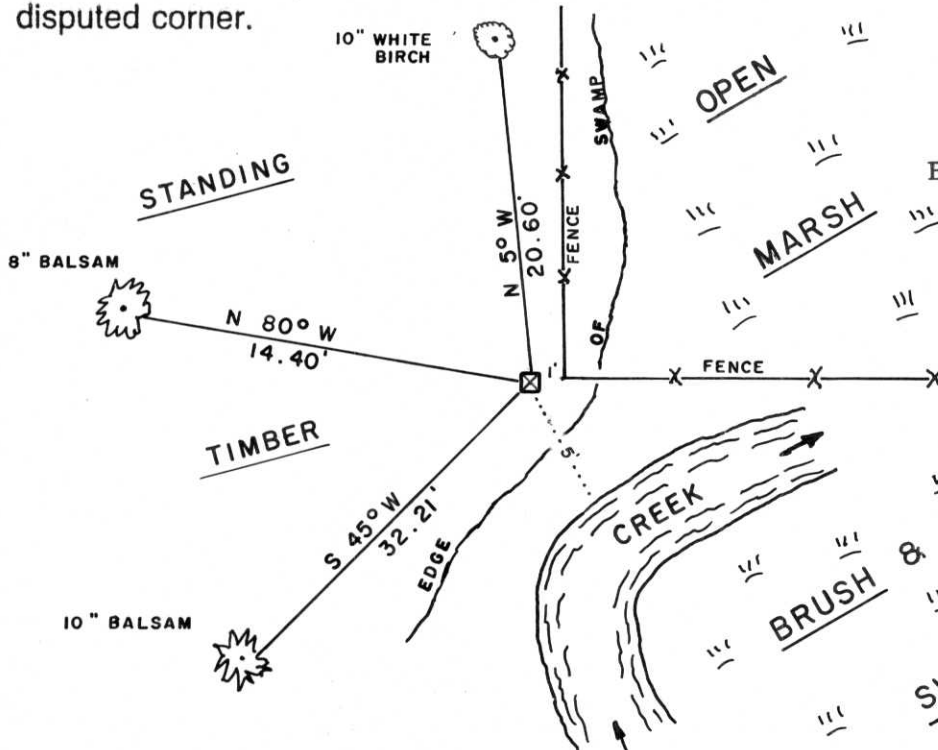


Section 7

(b) (f) (g) (h) Description of monument found at this corner and if it was accepted, state all evidence (material, testimonial, occupational, plats, records, other monuments) used as a basis for accepting. If not accepted or if nothing was found, state evidence used as basis for establishing location. If reestablished through lost corner proportionate methods, indicate all monuments, distances and directions used to establish.

Could find no record of this corner per research at Lincoln County Surveyor's office except for notes by Francis Fox from re-survey of Town of Rock Falls in 1941-1942. Commenced measurement at Northeast corner of Section 7-33-7 and traversed West. We recovered a 6"x6" red granite stone with chisel "X" 1 foot West of old fence corner, said fence corner being a 5' high iron rail. Stone protrudes about 16 inches above ground and has a 1 1/2" iron pipe placed along South face of monument. Accepted stone as corner and tied out to trees as surrounding ground is too swampy for iron pipes to be set firmly.

(c) (d) (e) Plan view of corner with ties to at least 4 witness monuments. If in disagreement with previously established corner, show the distances between the two corners and also indicate the ties to the disputed corner.



NOTE: All ties are to head of 3" cut nail in metal plaque on blazed tree noted.

Bearings approximate.

(i) I, LaVerne H. Mosher
 (type or print name) certify that the corner location on this record was determined by me or under my direction and control and that this U.S. Public Land Survey Monument Record is correct and complete to the best of my knowledge and belief.

LaVerne H. Mosher
 Signature

AUGUST 2, 1991
 Date



RECEIVED AUG 26 1991

Index No. E-5

Section Corner $\frac{615}{718}$
T33N, R7E
Lincoln Co. Wis.

DHDT (Line Co.)

11 AUG. 72

RASSON, SCHMIT

Dug for Sec. Cor. $\frac{615}{718}$ @ Intersection of C.T.H. 'H' & C.T.H. 'V' & Chase Hill Dr. FOUND 0.5' sq. red granite monument below blacktop part. (undisturbed). Made ties & drove 1/2" dia. iron rod @ west corner of monument.

3 Nov. 72

WINAT, SPRUSTER

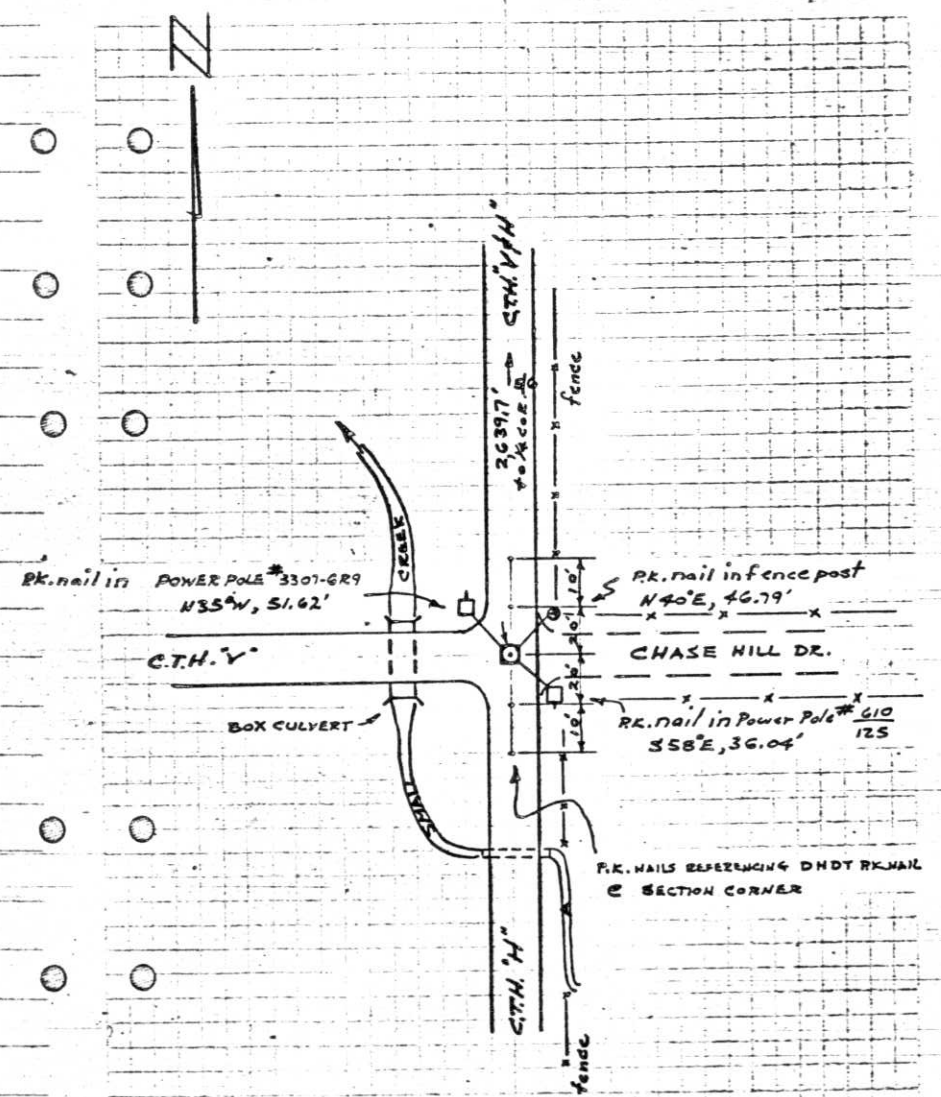
Set Berntsen alum. monument over stone monument.

NOTE: DHDT RK.NAIL is directly over stone monument & Alum. Mont.
27 Nov. 72

MCMULLEN, SPRISTER

Stamped cap.

147.



Robert Winat, Northwoods Surveyor
Copies of work done for Division
of Hwys. Received Feb. 1973

Section Corner $\frac{65}{78}$
 T33N, R7E
 Lincoln Co. Wis.

DNDT (Line Co.)

11 AUG. '72

RASSON, SCHMIT

Dug for Sec. Cor. $\frac{65}{78}$ @ Intersection of C.T.H. "H" & C.T.H. "V" & Chase Hill Dr. Found 0.5' sq. red granite monument below blacktop part. (undisturbed). Made ties & drove 1/2" dia. iron rod @ west corner of monument.

3 NOV. '72

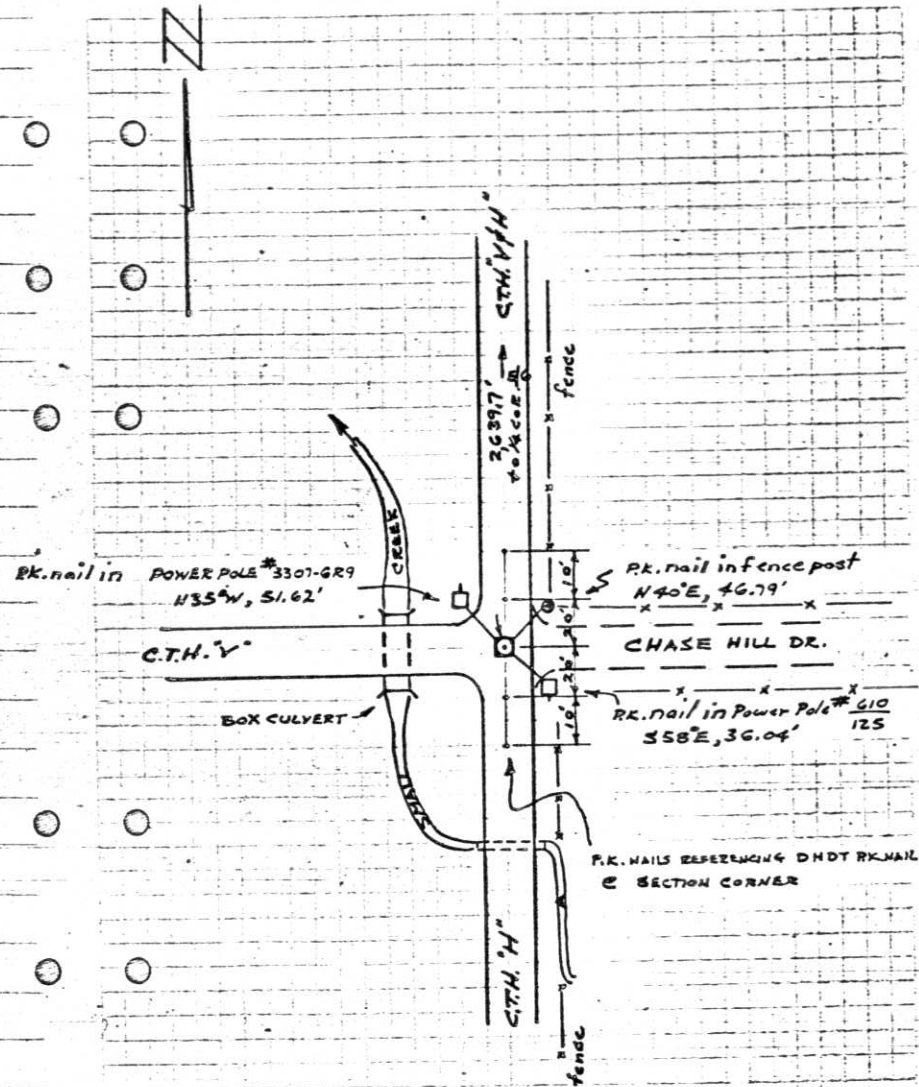
WINAT, SPRUSTER

Set Berntsen alum. monument over stone monument.

NOTE: DNDT RKNAIL is directly over stone monument & Alum. Mon.
 27 NOV. '72

M. MULLEN, Spritzer

Stamped cap.

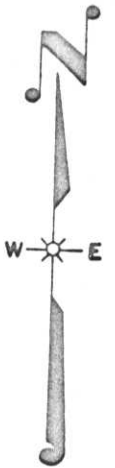
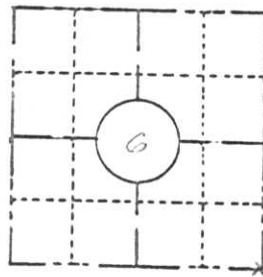


146.

FIELD SURVEY NOTES
PRESERVATION OF LANDMARKS
 (Pursuant to Section 59.635(7) Wisconsin Statutes)

Wisconsin Department of Transportation
 E-D-707-87

COUNTY <i>Lincoln</i>		
TOWN <i>Birch</i>		
HIGHWAY <i>U.S.H. 51 FREEWAY</i>		
SECTION <i>6</i>	TOWNSHIP <i>T33N</i>	RANGE <i>R7E</i>
TYPE OF LANDMARK <i>S.E. SECTION CORNER</i>		

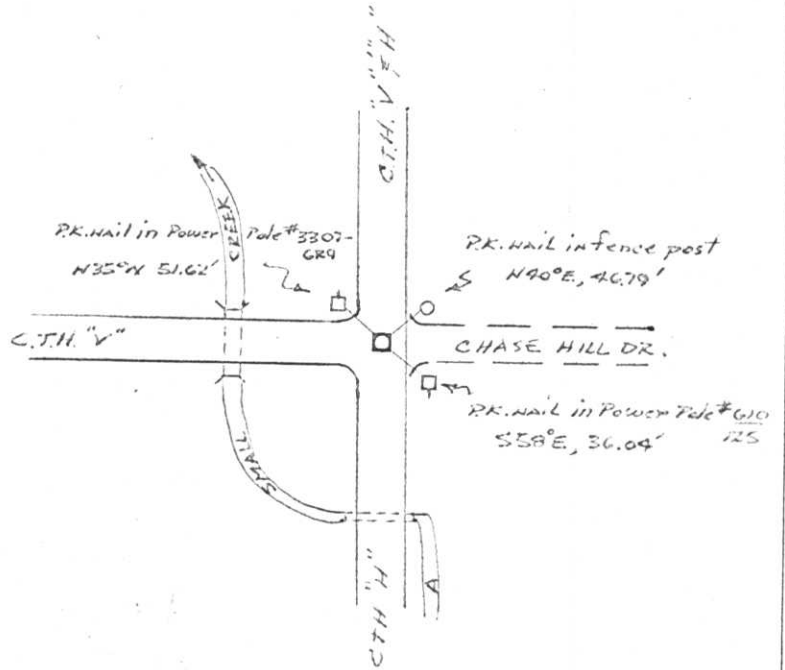


LOCATION SKETCH
 (Location of landmark indicated by "x")

This space for copy of field notes or ties to the above described landmarks

No evidence of the original corner & accessories was found. However; the 0.5'sq. red granite monument found under the pavement is at the center of the road intersection and is the best evidence of Jackson Prentices Oct. 1861 Corner.

Set Bernitsen Aluminum monument over stone monument and made ties.



FILED UNDER PROJECT <i>U.S.H. 51 FREEWAY</i>		COUNTY CLERK'S OFFICE	
NUMBER <i>I.D. 1173-0-02</i>		COUNTY OF <i>Lincoln</i> WISCONSIN } SS	
SHC DISTRICT OFFICE NUMBER <i>7</i>	CITY	DATE RECEIVED FOR RECORD	DATE COPY SENT TO COUNTY SURVEYOR
LOCATED OR ESTABLISHED BY <i>NORTHWOODS SURVEYORS, INC.</i>		<i>1/26/73</i>	<i>L</i>
NAME <i>Robert H. Vincent</i>		SIGNATURE OF COUNTY CLERK	
TITLE <i>Land Surveyor S-1070</i> DATE <i>Dec. 1972</i>		<i>Ken Olsenberg</i>	

PRESERVATION OF LANDMARKS

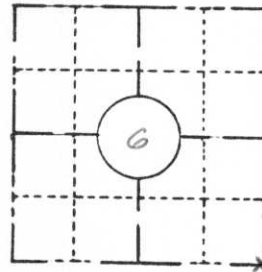
PAGE _____

E-5

PRESERVATION OF LANDMARKS

(Pursuant to Section 59.635(7) Wisconsin Statutes)

COUNTY <i>Lincoln</i>		
TOWN <i>Birch</i>		
HIGHWAY <i>U.S.H. 51 FREEWAY</i>		
SECTION <i>6</i>	TOWNSHIP <i>T33N</i>	RANGE <i>R7E</i>
TYPE OF LANDMARK <i>S.E. SECTION CORNER</i>		



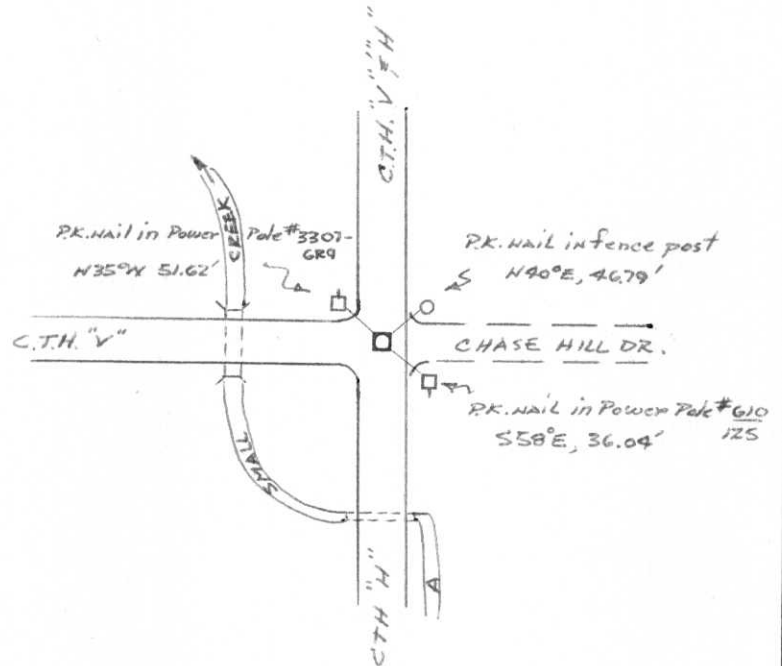
LOCATION SKETCH
(Location of landmark indicated by "x")



This space for copy of field notes or ties to the above described landmarks

No evidence of the original corner & accessories was found. However; the 0.5'sq. red granite monument found under the pavement is at the center of the road intersection and is the best evidence of Jackson Prentices Oct. 1861 Corner.

Set Berntsen Aluminum monument over stone monument and made ties.



FILED UNDER PROJECT <i>U.S.H. 51 FREEWAY</i>		COUNTY CLERK'S OFFICE	
NUMBER <i>I.D. 1173-0-02</i>		COUNTY OF <i>Lincoln</i> WISCONSIN } SS	
SHC DISTRICT OFFICE NUMBER <i>7</i>	CITY	DATE RECEIVED FOR RECORD	DATE COPY SENT TO COUNTY SURVEYOR
LOCATED OR ESTABLISHED BY <i>NORTHWOODS SURVEYORS, INC.</i>		<i>1/26/73</i>	<i>L</i>
NAME <i>Robert H. Winal</i>		SIGNATURE OF COUNTY CLERK	
TITLE <i>Land Surveyor S-1040</i> DATE <i>Dec. 1972</i>		<i>Ken Oldenberg</i>	