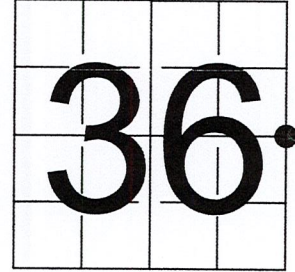


U S PUBLIC LAND SURVEY MONUMENT RECORD

NOTE: This form is intended and designed to fulfill all requirements of Wisconsin Administrative Code, Chapter A-E 7.08 U.S. Public Land Survey Monument Record (3) (a-i)

A-E 7.08(3)(a) Identity of corner:
 EAST 1/4 CORNER SECTION 36,
 TOWNSHIP 33 NORTH,
 RANGE 06 EAST OF THE 4TH PM,
 TOWN OF ROCK FALLS,
 COUNTY OF LINCOLN

WISCORS - LINCOLN COUNTY
 N: 166,542.388 USft (166,543.030)
 E: 396,845.436 USft (396,845.539)
 Datum: NAD83 (2011)
 GNSS Method RTN - Direct
 GNSS Control WISCORS VRS



The coordinate value shown has been verified by the average of two or more GPS observations at a markedly different time. Coordinates shown in parenthesis are provided by Lincoln County.

A-E 7.08(3)(b)

Original Surveyor: James M. Marsh

Date of Original Survey Commenced: July 29, 1851
 Completed: August 11, 1851

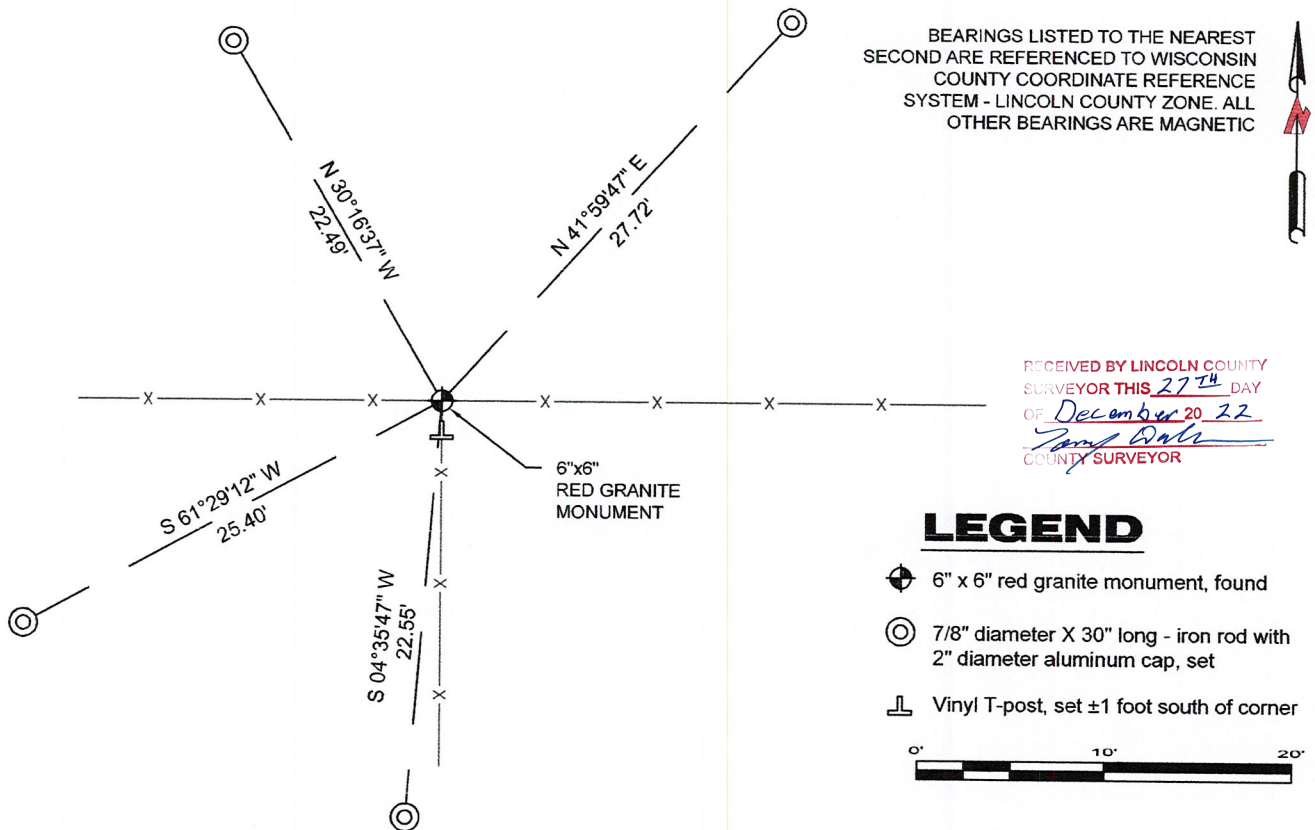
Original Accessories:
 Hemlock 8 S 35° E 27 links
 Hemlock 8 S 11° W 12 links
 Hemlock 9 N 38° W 6 links
 Hemlock 7 N 37° E 9 links

1941 - Francis X. Fox (aka Francis X. Fuchs) - Survey of TWP., 32 & 33 N. ~ R.6 E. Town of Rock Falls - indicates "set corners to all forties on all quarter & section lines" on Map M136A.

November 22, 2016 - Surveyor 2964 - Theodore G. Sommer - Indicates this position as "square granite monument found in place" on Lincoln County map S599A.

December 5, 2022 - While performing the 2022 Lincoln County PLSS Corner Remonumentation and GPS Services project, I found a 6"x 6" red granite stone near the computed position provided by Lincoln County. I established 4 new reference monuments as shown below.

A-E 7.08(3)(c)(d) Plan view of corner with references to at least 4 witness monuments.

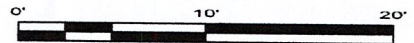


BEARINGS LISTED TO THE NEAREST SECOND ARE REFERENCED TO WISCONSIN COUNTY COORDINATE REFERENCE SYSTEM - LINCOLN COUNTY ZONE. ALL OTHER BEARINGS ARE MAGNETIC

RECEIVED BY LINCOLN COUNTY SURVEYOR THIS 27TH DAY OF December 20 22
 Jeffrey DeMuth
 COUNTY SURVEYOR

LEGEND

- 6" x 6" red granite monument, found
- 7/8" diameter X 30" long - iron rod with 2" diameter aluminum cap, set
- Vinyl T-post, set ±1 foot south of corner



A-E 7.08(3)(e) 1851 Surveyor set a post, 1941 Surveyor set a granite stone monument, 2016 Surveyor found a granite monument. I found a 6" x 6" red granite stone.

A-E 7.08(3)(f) I accept this monument as a FOUND PERPETUATED LOCATION of the corner.

A-E 7.08(3)(g)(h) This corner was not determined through lost-corner-proportionate methods.

A-E 7.08(3)(i) I, Jeffrey L. DeMuth, Professional Land Surveyor No. S-2656, hereby certify that the corner location on this record was determined by the Lincoln County Surveyor, and the monuments found or set as shown hereon were measured by me or under my direction and control, and that this U.S. Public Land Survey Monument Record is correct and complete to the best of my knowledge, and belief.

SIGNATURE DATE December 14, 2022



W-25

REPORT

2022-Lincoln County PLSS Corner Remonumentation and GPS Services

Wisconsin Corner Point Identification Number: 43306362000

Surveyor: Jeffrey L. DeMuth – S2656

Corner monument: Found 6" x 6" red granite stone.

Field Book: Cardinal North – Lincoln Co. Remon. – 2022-00

Page: 75

Horizontal Datum: WisCRS – Lincoln County Zone – NAD83(2011)

Date / time of initial measurement:

December 5, 2022 - Start 09:28:52 CST – End 09:37:01 CST

Reference monuments:

4 – Set - 7/8" diameter X 30" long iron rods with 2" diameter Lincoln Co. aluminum cap.

Coordinate Table

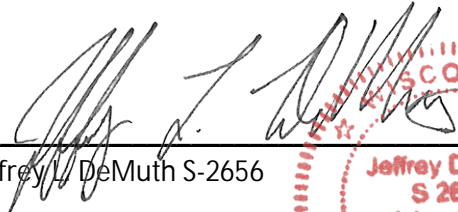
	County Provided	2022 Measurement	Difference
North	166543.030	166542.388	0.64
East	396845.539	396845.436	0.10

Observed coordinates match with existing coordinates within reason.


Request Data Log for more information.

Additional Notes:

Corner falls at the intersection of an old-down barbed wire fence heading E-W and south from the corner.


Jeffrey L. DeMuth S-2656

December 12, 2022
Date



43306362000_Mon-N



43306362000_North

PLEASE
DO NOT
DISTURB
NEARBY
SURVEY
MARKERS
IF THE LOCATION
OF THIS MARKER
IS CHANGING
PLEASE CONTACT
THE
SURVEY
ENGINEER

4-3306362000



43306362000_West



43306362000_South



4330636200_East

