

U.S. PUBLIC LAND SURVEY MONUMENT RECORD

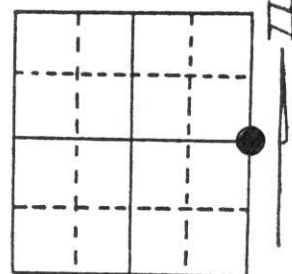
Note: This form is intended and designed to fulfill all requirements of Wisconsin Administrative Code, Chapter A-E 5.02, U.S. Public Land Survey Monument Record (3) (a) (b) (c) (d) (e) (f) (g) (h) (i). An additional sheet may be added if necessary to conform with said requirements.

(a) Corner location: Township 33 North

Range 6 East

Town/City/Village TN. OF ROCK FALLS

County LINCOLN



Section 35

(b) (f) (g) (h) Description of monument found at this corner and if it was accepted, state all evidence (material, testimonial, occupational, plats, records, other monuments) used as a basis for accepting. If not accepted or if nothing was found, state evidence used as basis for establishing location. If reestablished through lost corner proportionate methods, indicate all monuments, distances and directions used to establish.

CORNER HISTORY ON FILE IN COUNTY SURVEYORS OFFICE

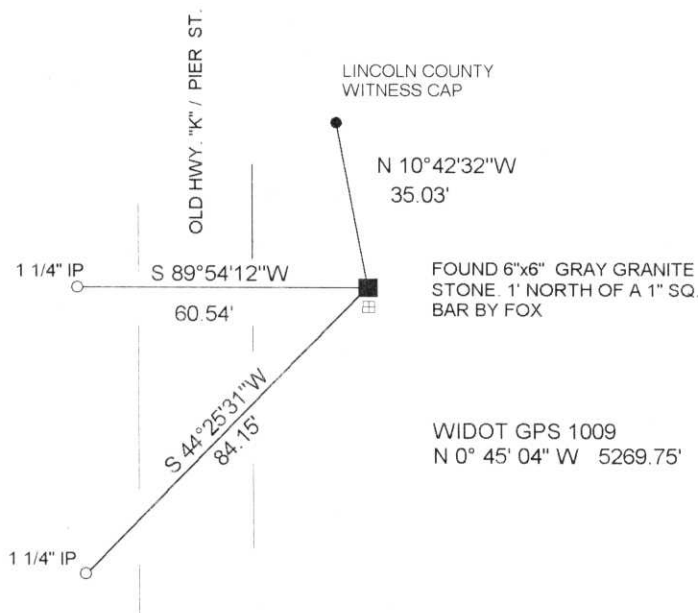
APRIL 1997

FOUND GRANITE STONE WITNESSED BY A 1" SQUARE IRON 1' SOUTH OF STONE SET BY FOX IN 1940.

FOUND NO EVIDENCE OF DOT TIES FROM 1971.

RECEIVED AT LINCOLN COUNTY
COURTHOUSE THIS 2nd DAY
OF June 1997
Pat Priebe
TAX DESCRIPTION OFFICE

(c) (d) (e) Plan view of corner with ties to at least 4 witness monuments. If in disagreement with previously established corner, show the distances between the two corners and also indicate the ties to the disputed corner.



(i) I, DAVID L. LEMKE S-1845
(type or print name) certify that the corner location on this record was determined by me or under my direction and control and that this U.S. Public Land Survey Monument Record is correct and complete to the best of my knowledge and belief.

[Handwritten Signature]

MAY 30 1997

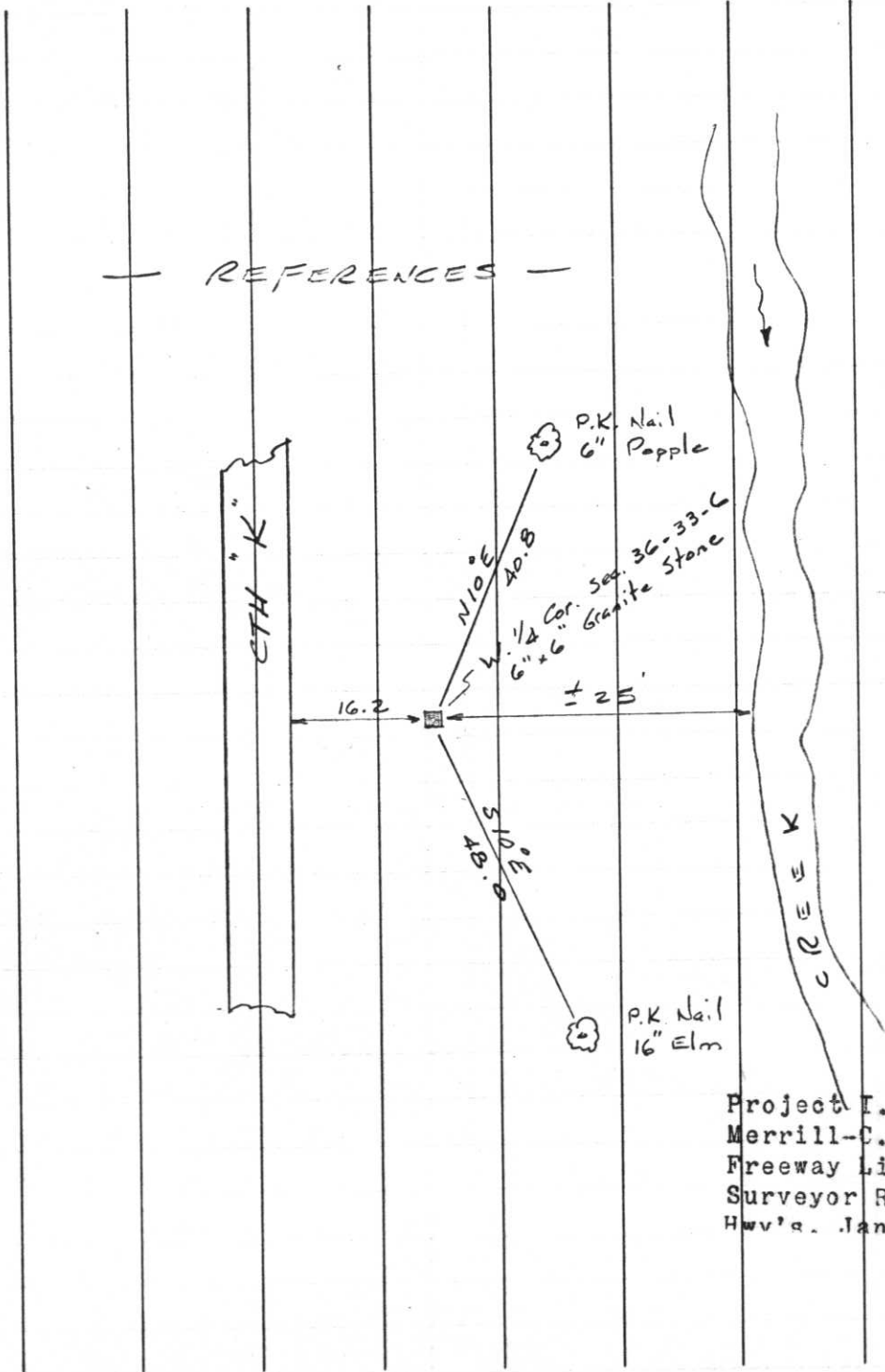
Signature

Date



Index No. M-21

75.

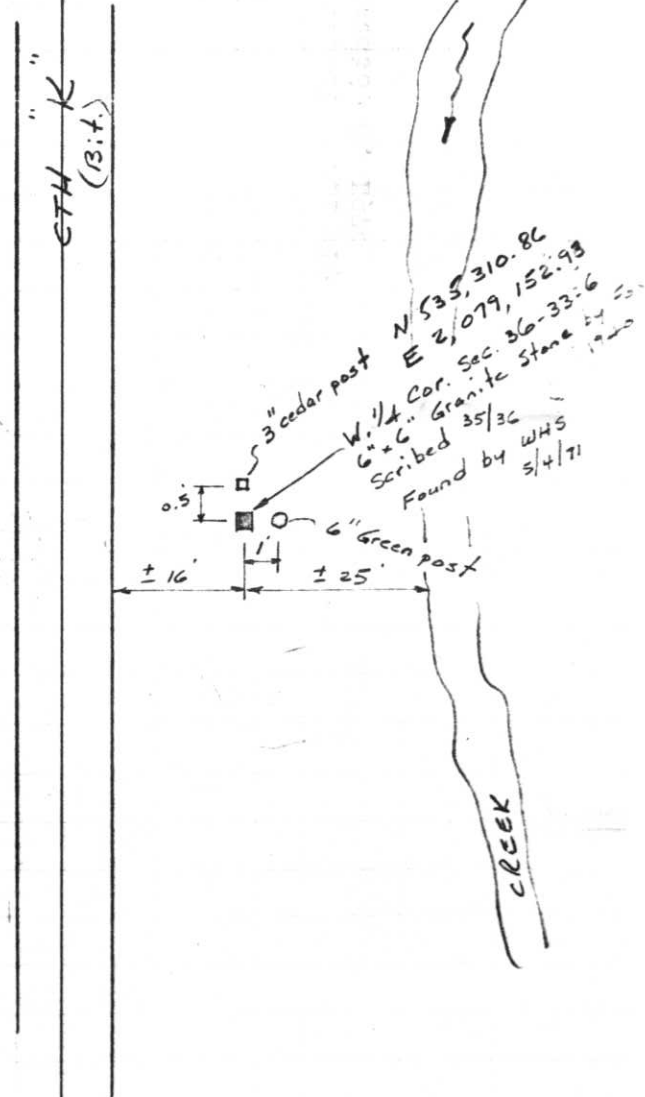


Project I.D. 1173-5-00 1.4 Mi.N.
 Merrill-C.T.H. "s" U.S.H. 51
 Freeway Lincoln County Wm. Scherer
 Surveyor Received from Division of
 Hwy's. Jan. 11.1973

T 33 N

R 6 E

May 4, 1971



35436





CAUTION
TELEPHONE CABLE
UNDERGROUND





CAUTION