

U.S. PUBLIC LAND SURVEY MONUMENT RECORD

NOTE: THIS FORM IS INTENDED AND DESIGNED TO FULFILL ALL REQUIREMENTS OF WISCONSIN ADMINISTRATIVE CODE, CHAPTER LAND SURVEY MONUMENT RECORD (3) (a) (b) (c) (d) (e) (f) (g) (h) (i). AN ADDITIONAL SHEET MAY BE ADDED IF NECESSARY TO CONFORM WITH SAID REQUIREMENTS. A-E 7.08 U.S. PUBLIC

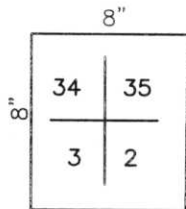
(a) CORNER LOCATION: TOWNSHIP 32 NORTH
 RANGE 6 EAST/~~WEST~~
 TOWN/~~CITY/VILLAGE~~ MERRILL
 COUNTY LINCOLN



SECTION 2

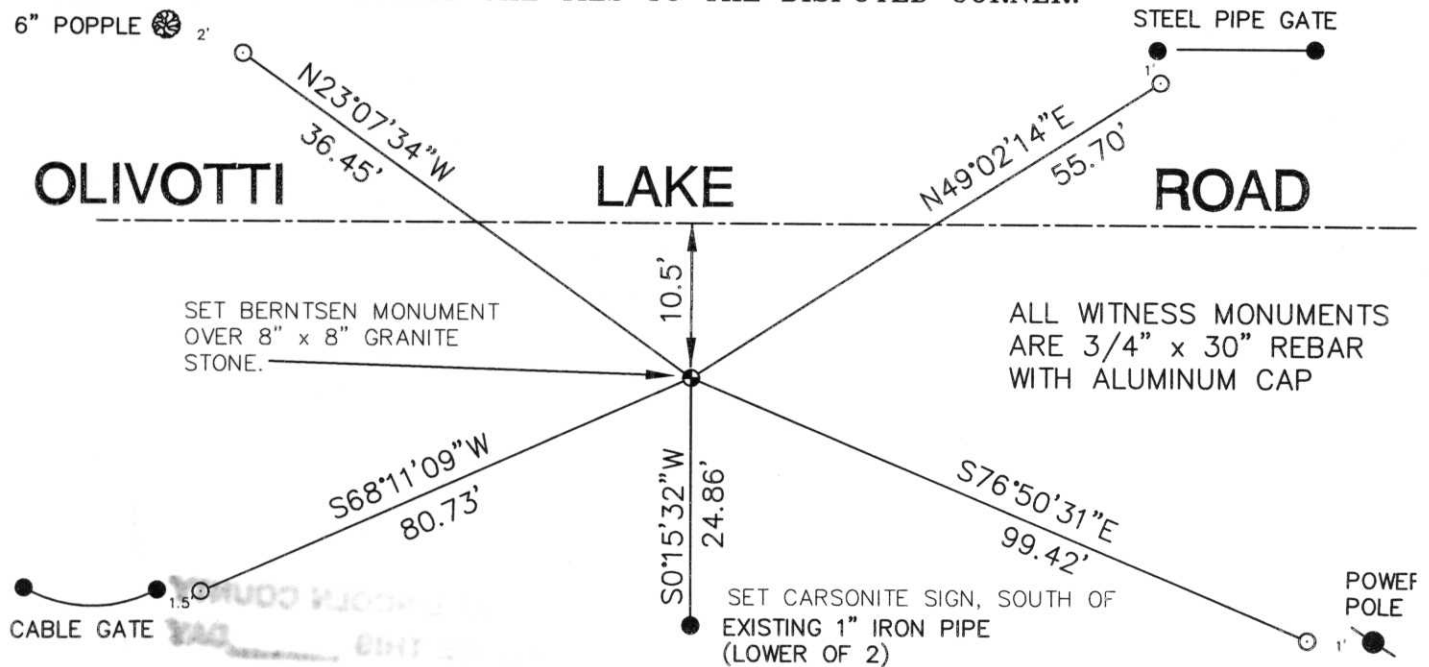
(b) (f) (g) (h) DESCRIPTION OF MONUMENT FOUND AT THIS CORNER AND IF IT WAS ACCEPTED, STATE ALL EVIDENCE (MATERIAL, TESTIMONIAL, OCCUPATIONAL, PLATS, RECORDS, OTHER MONUMENTS) USED AS BASIS FOR ACCEPTING. IF NOT ACCEPTED OR IF NOTHING WAS FOUND, STATE EVIDENCE USED AS BASIS FOR ESTABLISHING LOCATION. IF REESTABLISHED THROUGH LOST CORNER PROPORTIONATE METHODS, INDICATE ALL MONUMENTS, DISTANCES AND DIRECTIONS USED TO ESTABLISH. INDICATE TYPE OF MONUMENT FOUND OR SET AND SIGN POST.

COUNTY SURVEYOR HAD STARTED DIGGING BY HAND FOR THIS CORNER, AND HAD QUIT FOR THE DAY. WE WERE TRAVERSING BY, AND DECIDED TO FIND THE CORNER. DUG BY HAND, 48" DOWN, FOUND TOP OF BLACK GRANITE STONE, MARKED AS SHOWN BELOW. SET BERNTSEN MONUMENT OVER TOP OF STONE, FILLED IN, TIED OUT.



TOP OF GRANITE MONUMENT
 RECEIVED AT LINCOLN COUNTY
 COURTHOUSE THIS 1st DAY
 OF June 2000
Jerry Dallman
 LAND INFORMATION OFFICE

(c) (d) (e) PLAN VIEW OF CORNER WITH TIES TO AT LEAST 4 WITNESS MONUMENTS. IF IN DISAGREEMENT WITH PREVIOUSLY ESTABLISHED CORNER, SHOW THE DISTANCES BETWEEN THE TWO CORNERS AND ALSO INDICATE THE TIES TO THE DISPUTED CORNER.



(i) I, DAVID L. OSTERBRINK RLS NO. S-2014
 (TYPE OR PRINT NAME) CERTIFY THAT THE CORNER LOCATION ON THIS RECORD WAS DETERMINED BY ME OR UNDER MY DIRECTION AND CONTROL AND THAT THIS U.S. PUBLIC LAND SURVEY MONUMENT RECORD IS CORRECT AND COMPLETE TO THE BEST OF MY KNOWLEDGE AND BELIEF.

David L. Osterbrink
 SIGNATURE 6-1-00
 DATE



INDEX NO. A-17