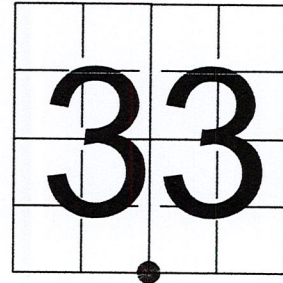


U S PUBLIC LAND SURVEY MONUMENT RECORD

NOTE: This form is intended and designed to fulfill all requirements of Wisconsin Administrative Code, Chapter A-E 7.08 U.S. Public Land Survey Monument Record (3) (a-i)

A-E 7.08(3)(a) Identity of corner:
 SOUTH 1/4 CORNER SECTION 33,
 TOWNSHIP 33 NORTH,
 RANGE 06 EAST OF THE 4TH PM,
 TOWN OF ROCK FALLS,
 COUNTY OF LINCOLN

WISCORS - LINCOLN COUNTY
 N: 164,016.582 USft (164,016.500)
 E: 378,323.836 USft (378,323.700)
 Datum: NAD83 (2011)
 GNSS Method RTN - Direct
 GNSS Control WISCORS VRS



The coordinate value shown has been verified by the average of two or more GPS observations at a markedly different time. Coordinates shown in parenthesis are provided by Lincoln County.

A-E 7.08(3)(b)

Original Surveyor: James M. Marsh

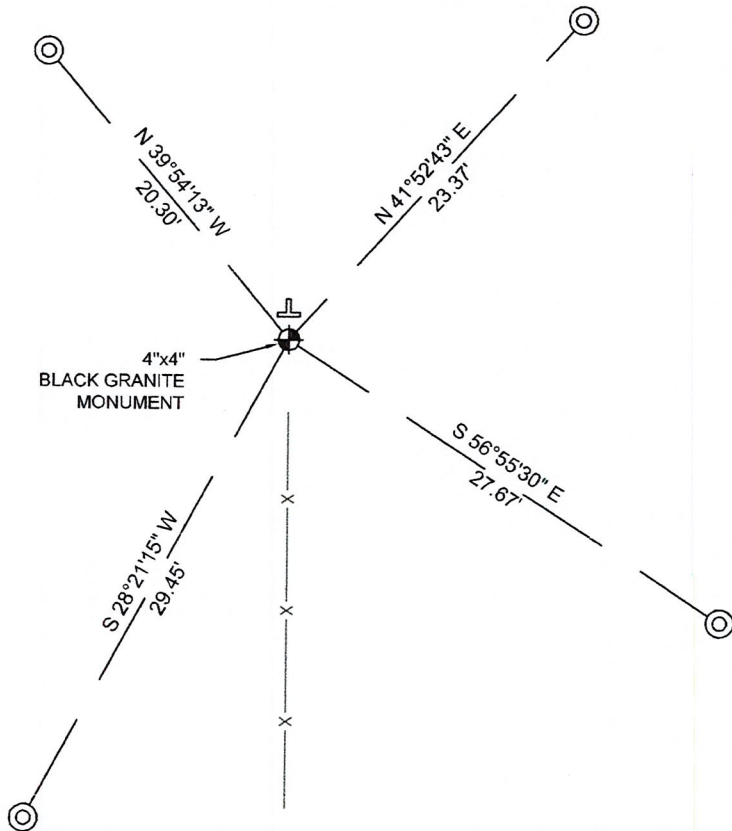
Date of Original Survey Commenced: July 29, 1851
 Completed: August 11, 1851

Original Accessories:
 Birch 8 S 82° E 26 links
 Tamarack 12 S 28° W 20 links
 Tamarack 12 N 30° W 18 links
 Birch 8 N 12° E 29 links

1941 - Francis X. Fox (aka Francis X. Fuchs) - Survey of TWP., 32 & 33 N. ~ R.6 E. Town of Rock Falls - indicates "set corners to all forties on all quarter & section lines" on Map M136A.

December 5, 2022 - While performing the 2022 Lincoln County PLSS Corner Remonumentation and GPS Services project, I found a 4"x 4" black granite stone near the computed position provided by Lincoln County. Stone was leaning south and I reset plumb. There is an old barbed wire fence heading south of the monument. I established 4 new reference monuments as shown below.

A-E 7.08(3)(c)(d) Plan view of corner with references to at least 4 witness monuments.



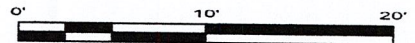
BEARINGS LISTED TO THE NEAREST SECOND ARE REFERENCED TO WISCONSIN COUNTY COORDINATE REFERENCE SYSTEM - LINCOLN COUNTY ZONE. ALL OTHER BEARINGS ARE MAGNETIC



RECEIVED BY LINCOLN COUNTY
 SURVEYOR THIS 27TH DAY
 OF December 20 22
James DeMuth
 COUNTY SURVEYOR

LEGEND

- 4" x 4" black granite monument, found
- 7/8" diameter X 30" long - iron rod with 2" diameter aluminum cap, set
- Vinyl T-post, set ±1 foot north of corner



A-E 7.08(3)(e) 1851 Surveyor set a post, 1941 Surveyor set a granite stone monument. I found a 4" x 4" black granite stone.

A-E 7.08(3)(f) I accept this monument as a FOUND PERPETUATED LOCATION of the corner.

A-E 7.08(3)(g)(h) This corner was not determined through lost-corner-proportionate methods.

A-E 7.08(3)(i) I, Jeffrey L. DeMuth, Professional Land Surveyor No. S-2656, hereby certify that the corner location on this record was determined by the Lincoln County Surveyor, and the monuments found or set as shown hereon were measured by me or under my direction and control, and that this U.S. Public Land Survey Monument Record is correct and complete to the best of my knowledge, and belief.

SIGNATURE

December 14, 2022

DATE



1-11

REPORT

2022-Lincoln County PLSS Corner Remonumentation and GPS Services

Wisconsin Corner Point Identification Number: 43306330020

Surveyor: Jeffrey L. DeMuth – S2656

Corner monument: Found 4" x 4" black granite stone.

Field Book: Cardinal North – Lincoln Co. Remon. – 2022-00

Page: 75

Horizontal Datum: WisCRS – Lincoln County Zone – NAD83(2011)

Date / time of initial measurement:

December 5, 2022 - Start 11:19:32 CST – End 11:41:59 CST

Reference monuments:

4 – Set - 7/8" diameter X 30" long iron rods with 2" diameter Lincoln Co. aluminum cap.

Coordinate Table

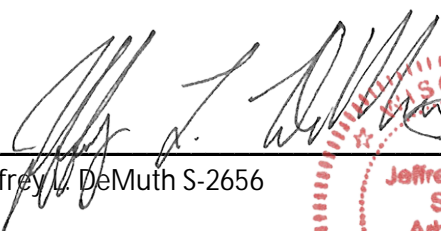
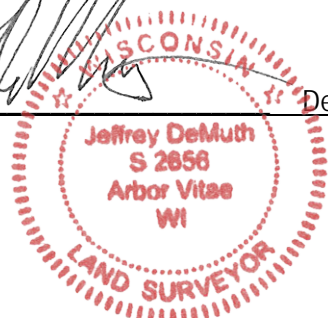
	County Provided	2022 Measurement	Difference
North	164016.500	164016.582	-0.08
East	378323.700	378323.836	-0.14

Observed coordinates match with existing coordinates within reason.

Request Data Log for more information.

Additional Notes:

Found monument leaning south, reset plumb. There is an old – down barbed wire fence line heading south from corner.


 Jeffrey L. DeMuth S-2656
 
 December 12, 2022
 Date

43306330020_Mon-N



43306330020_North



43306330020_West



43306330020_South



43306330020_East

