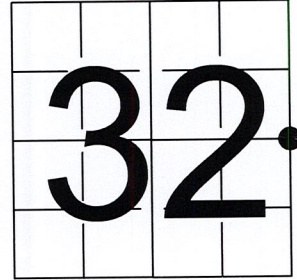


U S PUBLIC LAND SURVEY MONUMENT RECORD

NOTE: This form is intended and designed to fulfill all requirements of Wisconsin Administrative Code, Chapter A-E 7.08 U.S. Public Land Survey Monument Record (3) (a-i)

A-E 7.08(3)(a) Identity of corner:
 EAST 1/4 CORNER SECTION 32,
 TOWNSHIP 33 NORTH,
 RANGE 06 EAST OF THE 4TH PM,
 TOWN OF ROCK FALLS,
 COUNTY OF LINCOLN

WISCRS - LINCOLN COUNTY
 N: 166,763.006 USft (166,761.509)
 E: 375,469.196 USft (375,474.399)
 Datum: NAD83 (2011)
 GNSS Method RTN - Direct
 GNSS Control WISCORS VRS



The coordinate value shown has been verified by the average of two or more GPS observations at a markedly different time. Coordinates shown in parenthesis are provided by Lincoln County.

A-E 7.08(3)(b)

Original Surveyor: Jackson L. Prentice

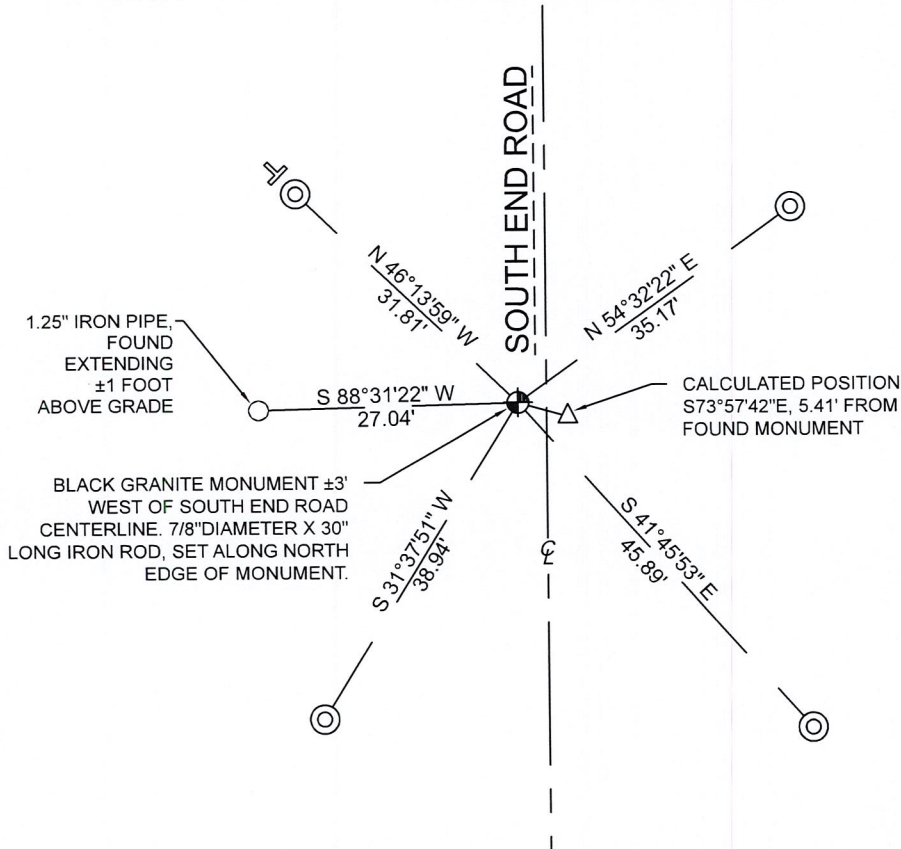
Date of Original Survey	Commenced:	October 27, 1852	Original Accessories:		
	Completed:	November 9, 1852	Pine	10	S 80° E 45 Links
			Pine	12	S 88° W 34 Links

1941 - Francis X. Fox - Survey of TWP., 32 & 33 N. ~ R.6 R. Town of Rock Falls - indicates "set corners to all forties on all quarter & section lines" on Map M136A.

May 23, 2022 - While performing the 2022 Lincoln County PLSS Corner Remonumentation and GPS Services project, I went to the coordinate position provided by Lincoln County, I made a careful search of the area and found no evidence of the corner or witnesses.

July 19, 2022 - Lincoln County Surveyor 2405 - Anthony R. Dallman - along with 2 highway department workers and myself excavated the road way surrounding the county position and found a 6" x 6" x 16" long black granite monument . The monument is 3 feet west of South End Road centerline, and 26" below road grade. I established 4 new reference monuments as shown below.

A-E 7.08(3)(c)(d) Plan view of corner with references to at least 4 witness monuments.

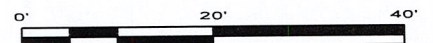


BEARINGS LISTED TO THE NEAREST SECOND ARE REFERENCED TO WISCONSIN COUNTY COORDINATE REFERENCE SYSTEM - LINCOLN COUNTY ZONE. ALL OTHER BEARINGS ARE MAGNETIC

RECEIVED BY LINCOLN COUNTY SURVEYOR THIS 19TH DAY OF September 20, 22
 Tony Dallman
 COUNTY SURVEYOR

LEGEND

- 6" x 6" black granite monument, found
- 7/8" diameter X 30" long - iron rod with 2" diameter aluminum cap, set
- Vinyl T-post, set ±1 foot NW of witness



A-E 7.08(3)(e) 1852 Surveyor set a post, 1941 Surveyor did not describe the monument. I found a granite stone.

A-E 7.08(3)(f) I accept this monument as a FOUND PERPETUATED LOCATION of the corner.

A-E 7.08(3)(g)(h) This corner was not determined through lost-corner-proportionate methods.

A-E 7.08(3)(i) I, Jeffrey L. DeMuth, Professional Land Surveyor No. S-2656, hereby certify that the corner location on this record was determined by the Lincoln County Surveyor, and the monuments found or set as shown hereon were measured by me or under my direction and control, and that this U.S. Public Land Survey Monument Record is correct and complete to the best of my knowledge, and belief.



SIGNATURE

Jeffrey L. DeMuth

September 16, 2022

DATE

M-9

REPORT

2022-Lincoln County PLSS Corner Remonumentation and GPS Services

Wisconsin Corner Point Identification Number: 43306322000
Surveyor: Jeffrey L. DeMuth – S2656
Corner monument: Found 6" x 6" x 16" long black granite stone.

Field Book: Cardinal North – Lincoln Co. Remon. – 2022-00
Page: 14

Horizontal Datum: WisCRS – Lincoln County Zone – NAD83(2011)

Date / time of initial measurement:
July 19, 2022 - Start 10:15:41 CDT – End 10:22:46 CDT

Reference monuments:
4 – Set - 7/8" diameter X 30" long iron rods with 2" diameter Lincoln Co. aluminum cap.
1 – Found – 1.25" iron pipe.

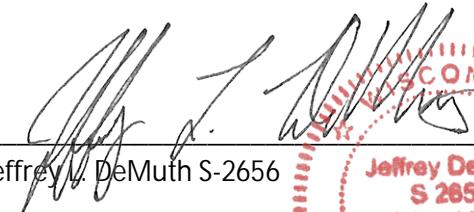
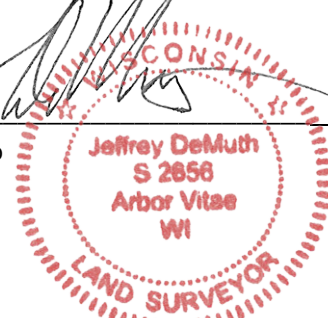
Coordinate Table

	County Provided	2022 Measurement	Difference
North	166761.509	166763.006	-1.50
East	375474.399	375469.196	5.20

Observed coordinates do not match existing calculated coordinates. Reason - monument found.
Request Data Log for more information.

Additional Notes:

Dug corner with county crew on July 19, 2022. Corner falls $\pm 3'$ west of South End Road centerline, and $\pm 26''$ below road grade.
7/8" diameter X 30" long iron rod, set on north side of monument.


 Jeffrey L. DeMuth S-2656
 
 September 16, 2022
 Date

43306322000_Mon-N



43306322000_North



43306322000_West



43306322000_South



43306322000_East

