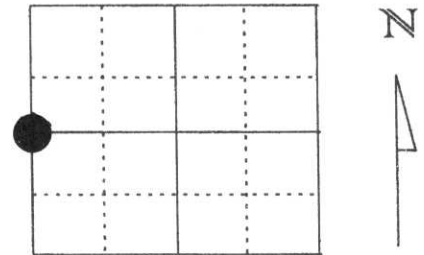


# U.S. PUBLIC LAND SURVEY MONUMENT RECORD

Note: This form is intended and designed to fulfill all requirements of Wisconsin Administrative Code, Chapter A-E 5.02, U.S. Public Land Survey Monument Record (3) (a) (b) (c) (d) (e) (f) (g) (h) (l). An additional sheet may be added if necessary to conform with said requirements.

(a) Corner location: Township 33 North  
 Range 6 East  
 Town/City/Village TN. OF ROCK FALLS  
 County Lincoln



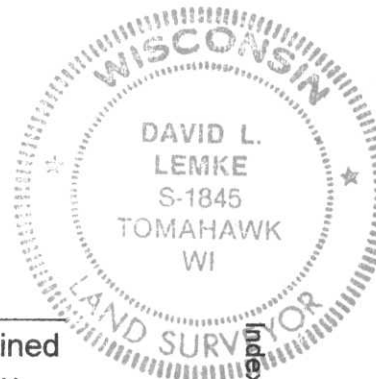
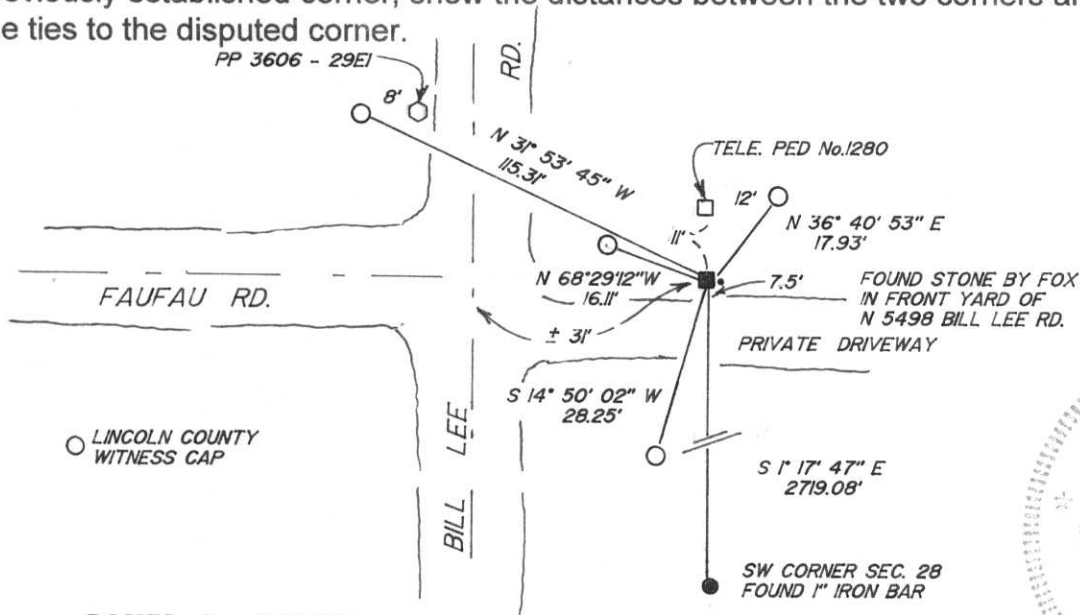
Section 28

(b) (f) (g) (h) Description of monument found at this corner and if it was accepted, state all evidence (material, testimonial, occupational, plats, records, other monuments) used as a basis for accepting. If not accepted or if nothing was found, state evidence used as basis for establishing location. If reestablished through lost corner proportionate methods, indicate all monuments, distances and directions used to establish.

FOUND 4"X4" BLACK GRANITE STONE WITH IRON PIPE ON EAST SIDE SET BY FRANCIS FOX IN 1941. MOST LIKELY WOULD NOT HAVE FOUND THIS STONE WITH OUT THE HELP OF FOX'S NOTES AS IT FALLS IN THE FRONT LAWN OF N5498 BILL LEE ROAD. BILL LEE ROAD IS 30 TO 40 FEET WEST OF THE WEST LINE OF SECTION 28.

RECEIVED AT LINCOLN COUNTY  
 COURTHOUSE THIS 14TH DAY  
 OF December 20 00  
*Tony Dallman*  
 LAND INFORMATION OFFICE

(c) (d) (e) Plan view of corner with ties to at least 4 witness monuments. If in disagreement with previously established corner, show the distances between the two corners and also indicate the ties to the disputed corner.



(l) I, DAVID L. LEMKE  
 (type or print name) certify that the corner location on this record was determined by me or under my direction and control and that this U.S. Public Land Survey Monument Record is correct and complete to the best of my knowledge and belief.

*David L. Lemke*  
 Signature

DEC. 13 2000

Date

Index No. S-9

29-28















