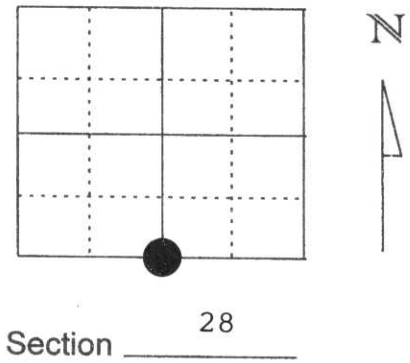


U.S. PUBLIC LAND SURVEY MONUMENT RECORD

Note: This form is intended and designed to fulfill all requirements of Wisconsin Administrative Code, Chapter A-E 5.02, U.S. Public Land Survey Monument Record (3) (a) (b) (c) (d) (e) (f) (g) (h) (i). An additional sheet may be added if necessary to conform with said requirements.

(a) Corner location: Township 33 North
 Range 6 East
 Town/City/Village TN. OF ROCK FALLS
 County Lincoln

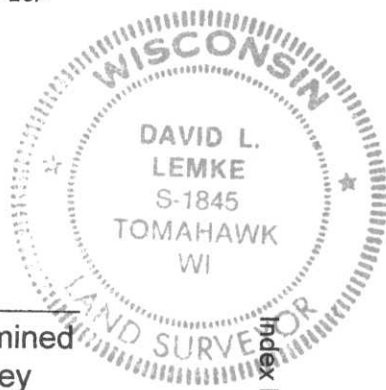
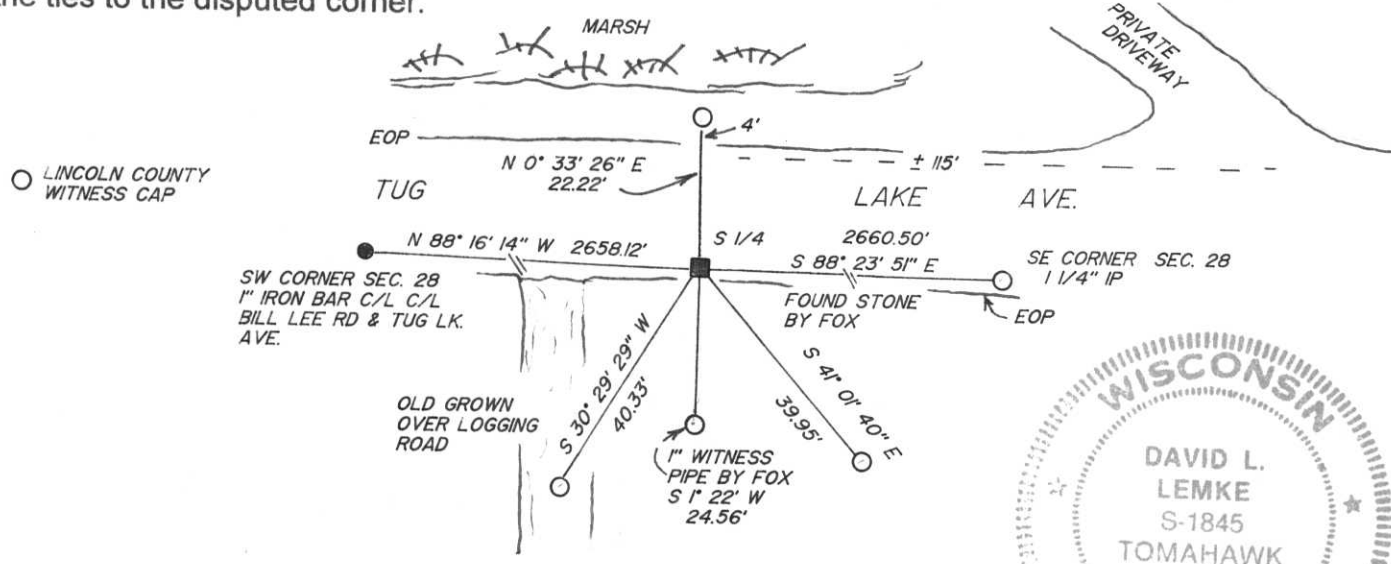


(b) (f) (g) (h) Description of monument found at this corner and if it was accepted, state all evidence (material, testimonial, occupational, plats, records, other monuments) used as a basis for accepting. If not accepted or if nothing was found, state evidence used as basis for establishing location. If reestablished through lost corner proportionate methods, indicate all monuments, distances and directions used to establish.

FOUND 4"X4" BLACK GRANITE STONE 8" BELOW ROAD SURFACE. ALSO FOUND 1" WITNESS PIPE SET BY FRANCIS FOX IN 1941. THE FOUND WITNESS PIPE WAS ON THE SOUTH SIDE OF TUG LAKE AVE.

RECEIVED AT LINCOLN COUNTY
 COURTHOUSE THIS 14TH DAY
 OF December 20 00
Tony Dallma
 LAND INFORMATION OFFICE

(c) (d) (e) Plan view of corner with ties to at least 4 witness monuments. If in disagreement with previously established corner, show the distances between the two corners and also indicate the ties to the disputed corner.



(I) I, DAVID L. LEMKE
 (type or print name) certify that the corner location on this record was determined by me or under my direction and control and that this U.S. Public Land Survey Monument Record is correct and complete to the best of my knowledge and belief.
[Signature]
 Signature Date DEC. 13 2000

Index No. 0-11









