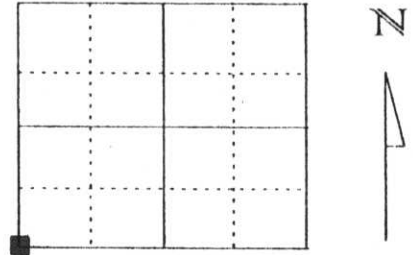


U.S. PUBLIC LAND SURVEY MONUMENT RECORD

Note: This form is intended and designed to fulfill all requirements of Wisconsin Administrative Code, Chapter A-E 5.02, U.S. Public Land Survey Monument Record (3) (a) (b) (c) (d) (e) (f) (g) (h) (I). An additional sheet may be added if necessary to conform with said requirements.

(a) Corner location: Township 33 North
 Range 6 East
 Town/City/Village ROCK FALLS
 County Lincoln



Southwest corner, Section 26

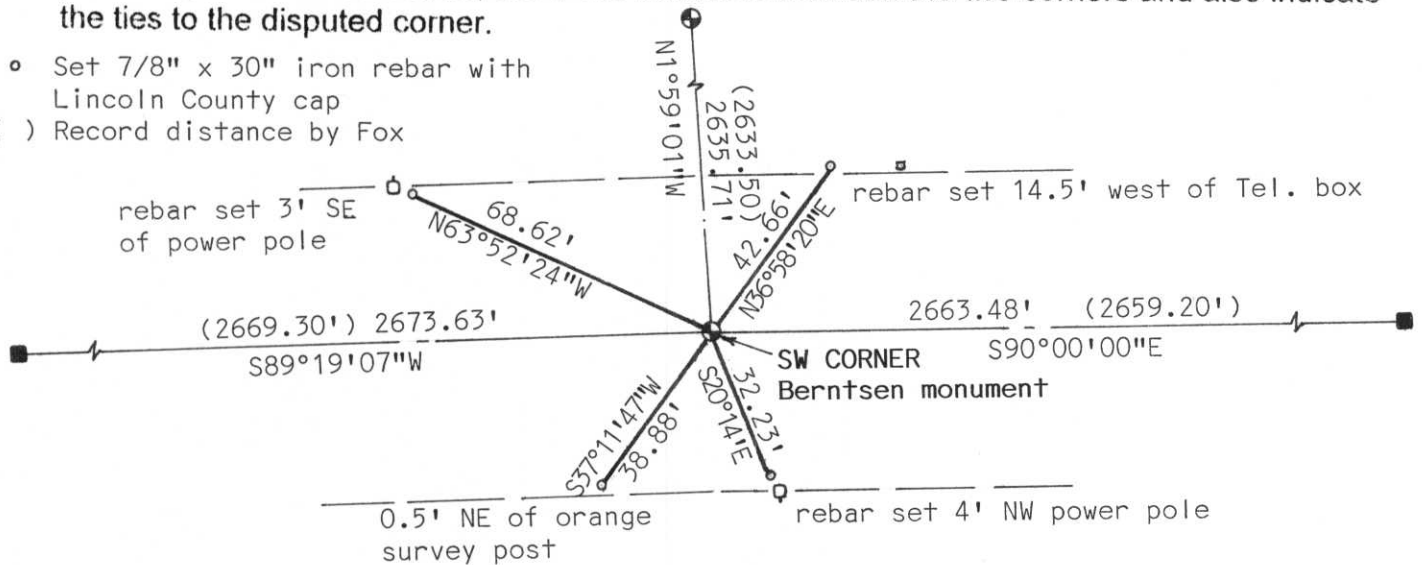
(b) (f) (g) (h) Description of monument found at this corner and if it was accepted, state all evidence (material, testimonial, occupational, plats, records, other monuments) used as a basis for accepting. If not accepted or if nothing was found, state evidence used as basis for establishing location. If reestablished through lost corner proportionate methods, indicate all monuments, distances and directions used to establish.

Corner was set by Francis Fox during the remonumentation of Rock Falls. According to notes by Fox the corner set was stone monument on centerline of road with offset irons north and south 24.75 feet of stone. We measured from the South $\frac{1}{4}$ corner of Section 27 and the South $\frac{1}{4}$ corner of Section 26. We dug at the record distance from these corners and the centerline of road. We found no evidence of the stone monument described. We set a Lincoln County Berntsen Monument single proportionate measurement between said corners and the centerline of Tug Lake Road as described in Fox's notes. Monument is set 1 foot below road surface.

**RECEIVED AT LINCOLN COUNTY
 COURTHOUSE THIS 1st DAY
 OF Feb. 2000
Pat Pribe
 LAND INFORMATION OFFICE**

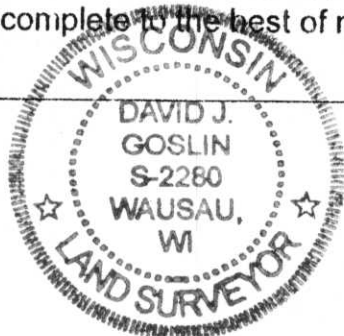
(c) (d) (e) Plan view of corner with ties to at least 4 witness monuments. If in disagreement with previously established corner, show the distances between the two corners and also indicate the ties to the disputed corner.

- o Set 7/8" x 30" iron rebar with Lincoln County cap
- () Record distance by Fox



(I) I, David J. Goslin RLS No. 2280
 (type or print name) certify that the corner location on this record was determined by me or under my direction and control and that this U.S. Public Land Survey Monument Record is correct and complete to the best of my knowledge and belief.

David J. Goslin
 Signature



1-28-00
 Date

Index No. 0-17









