

Attachment to Tie Sheet U-21, T33N, R6E

43306260000

I visited the corner on 4/25/2019 to verify the corner and reference tie monumentation before County Road work. I found a surface P.K. Nail and 4 ties from the David Lemke tie sheet (5/30/1997). The established Coordinates and ties agree with existing monument.

Anthony R. Dallman 8/20/19

Anthony R. Dallman, PLS-2405

Lincoln County Surveyor



U.S. PUBLIC LAND SURVEY MONUMENT RECORD

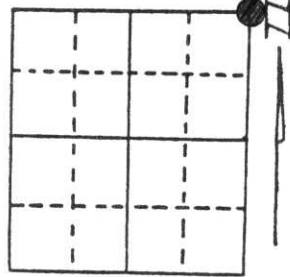
Note: This form is intended and designed to fulfill all requirements of Wisconsin Administrative Code, Chapter A-E 5.02, U.S. Public Land Survey Monument Record (3) (a) (b) (c) (d) (e) (f) (g) (h) (i). An additional sheet may be added if necessary to conform with said requirements.

(a) Corner location: Township 33 North

Range 6 East

Town/City/Village TN. OF ROCK FALLS

County LINCOLN



Section 35

(b) (f) (g) (h) Description of monument found at this corner and if it was accepted, state all evidence (material, testimonial, occupational, plats, records, other monuments) used as a basis for accepting. If not accepted or if nothing was found, state evidence used as basis for establishing location. If reestablished through lost corner proportionate methods, indicate all monuments, distances and directions used to establish.

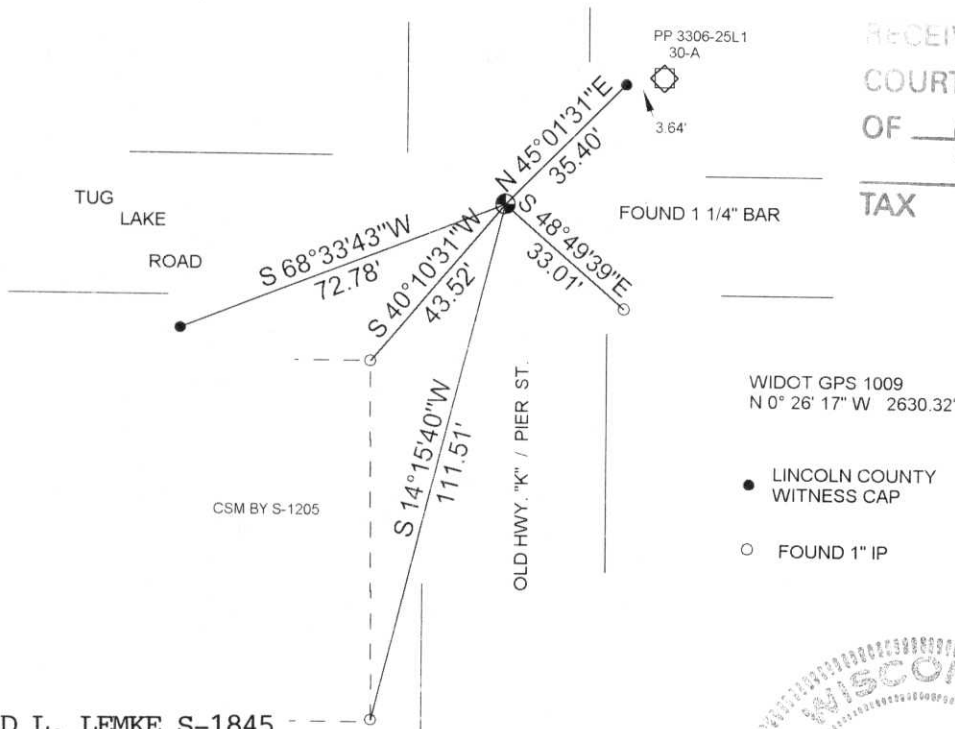
CORNER HISTORY ON FILE IN COUNTY SURVEYORS OFFICE

OCTOBER 1983 SHERIDAN SCHWARK RECOVERED A 1" IRON PIPE AS THE CORNER POSITION FOR A CSM IN THE SW CORNER OF THE INTERSECTION OF TUG LAKE RD. & THEN HWY. "K".

MAY OF 1987 BILL KELLY FOUND THE PIPE AND PLACED A RAILROAD SPIKE OVER IT AND ESTABLISHED 4 TIES.

APRIL 1997 I FOUND AN IRON BAR - WHICH MIGHT BE KELLY'S SPIKE - AND TWO OF KELLY'S TIES TO THE CORNER.

(c) (d) (e) Plan view of corner with ties to at least 4 witness monuments. If in disagreement with previously established corner, show the distances between the two corners and also indicate the ties to the disputed corner.



RECEIVED AT LINCOLN COUNTY COURTHOUSE THIS 2nd OF June 1997
Pat Priebe
TAX DESCRIPTION OFFICE

WIDOT GPS 1009
N 0° 26' 17" W 2630.32'

- LINCOLN COUNTY WITNESS CAP
- FOUND 1" IP

(i) I, DAVID L. LEMKE S-1845
(type or print name) certify that the corner location on this record was determined by me or under my direction and control and that this U.S. Public Land Survey Monument Record is correct and complete to the best of my knowledge and belief.

MAY 30 1997

Signature

Date



Index No. U-21

U.S. PUBLIC LAND SURVEY MONUMENT RECORD

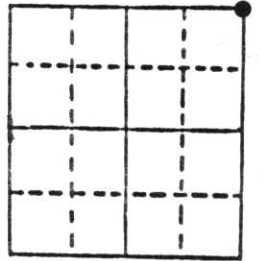
Note: This form is intended and designed to fulfill all requirements of Wisconsin Administrative Code, Chapter A-E 5.02, U.S. Public Land Survey Monument Record (3) (a) (b) (c) (d) (e) (f) (g) (h) (i). An additional sheet may be added if necessary to conform with said requirements.

(a) Corner location: Township 33 North

Range 6 East

Town N. ROCK FALLS

County LINCOLN



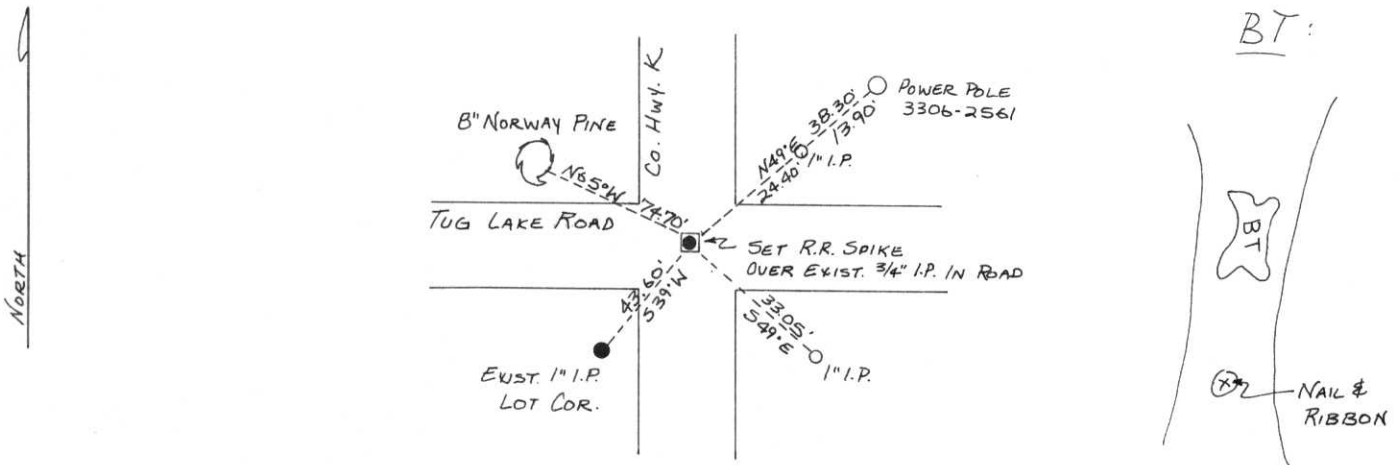
Section 35

b) (f) (g) (h) Description of monument found at this corner and if it was accepted, state all evidence (material, testimonial, occupational, plats, records, other monuments) used as a basis for accepting. If not accepted or if nothing was found, state evidence used as basis for establishing location. If reestablished through lost corner proportionate methods, indicate all monuments, distances and directions used to establish.

FOUND IN PLACE: 3/4" IRON PIPE BELOW ROAD SURFACE.
SET R.R. SPIKE OVER 3/4" I.P.

IRON PIPE AGREED WITH SURVEY NOTES PAGE 45 BY FOX
DIST. FROM 1/4 COR STONE CHECKED

c) (d) (e) Plan view of corner with ties to at least 4 witness monuments. If in disagreement with previously established corner, show the distances between the two corners and also indicate the ties to the disputed corner.



(i) I, WILLIAM F. KELLY
(type or print name) certify that the corner location on this record was determined by me or under my direction and control and that this U.S. Public Land Survey Monument Record is correct and complete to the best of my knowledge and belief.

William F. Kelly 51098 5/6/87
Signature Date



Index No. 0-21