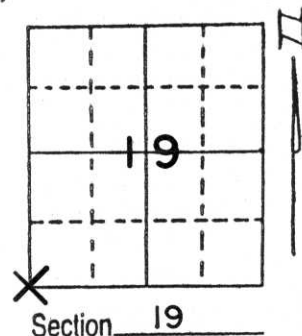


# U.S. PUBLIC LAND SURVEY MONUMENT RECORD

Note: This form is intended and designed to fulfill all requirements of Wisconsin Administrative Code, Chapter A-E 5.02, U.S. Public Land Survey Monument Record (3) (a) (b) (c) (d) (e) (f) (g) (h) (i). An additional sheet may be added if necessary to conform with said requirements.

(a) Corner location: Township 33 North  
 Range 7 East/~~12~~  
 Town/City/Village BIRCH  
 County LINCOLN

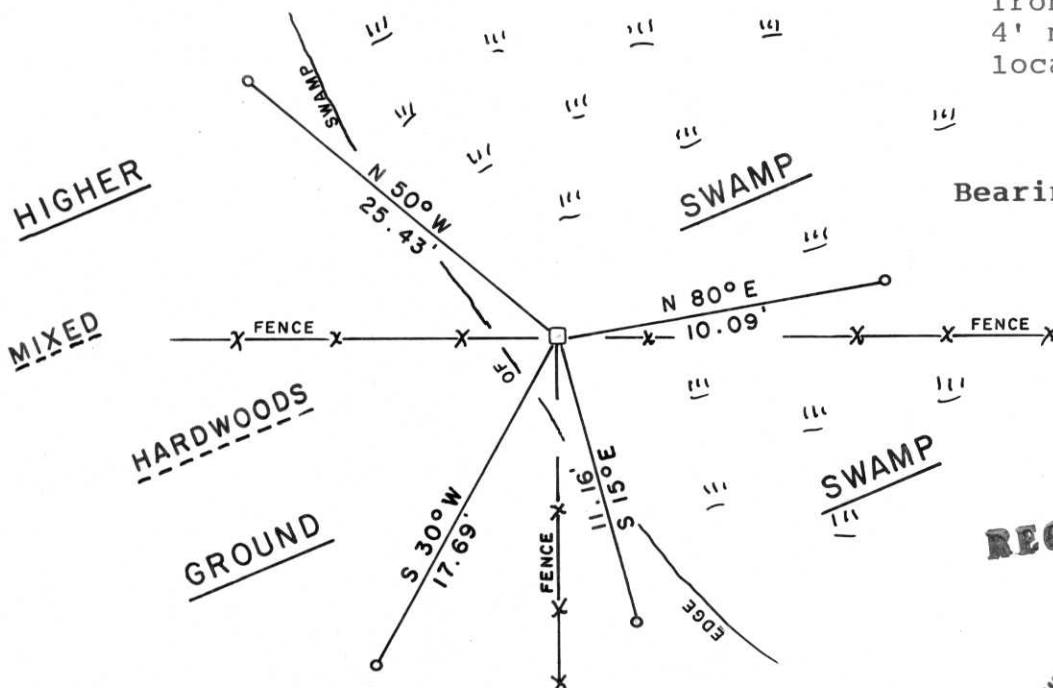


(b) (f) (g) (h) Description of monument found at this corner and if it was accepted, state all evidence (material, testimonial, occupational, plats, records, other monuments) used as a basis for accepting. If not accepted or if nothing was found, state evidence used as basis for establishing location. If reestablished through lost corner proportionate methods, indicate all monuments, distances and directions used to establish.

No record of this corner per reference sheets provided by Wisconsin Department of Transportation Rhinelander office. On this date we recovered a 6" square red granite monument, 36" long, with chisel "X" diagonally across its top surface. Monument was located in old fence corner with fences running East-West and to South from stone. Monument protruded about 24" above ground and was tipped to East. Tied out bottom of stone where it entered ground, removed and dug hole to reset stone deeper to stabilize it. After resetting stone, it protrudes about 6 inches above ground. Believe this monument was found by F. Fox during remonumentation of Rock Falls Township. Accepted as correct and tied out.

(c) (d) (e) Plan view of corner with ties to at least 4 witness monuments. If in disagreement with previously established corner, show the distances between the two corners and also indicate the ties to the disputed corner.

NOTE: All ties are to 1"x24" iron pipe marked with 4' metal fence post and location poster.



RECEIVED AUG 26 1991

(i) I, LaVerne H. Mosher  
 (type or print name) certify that the corner location on this record was determined by me or under my direction and control and that this U.S. Public Land Survey Monument Record is correct and complete to the best of my knowledge and belief.



LaVerne H. Mosher  
 Signature

AUGUST 2, 1991  
 Date

Index No. Q-1