

# Attachment to Tie Sheet O-21, T33N, R6E

43306232000

I visited the corner on 5/01/2019 to verify the corner and reference tie monumentation before County Road work. I found a surface MAG Nail and all 4 ties from the David Lemke tie sheet (5/30/1997). The established Coordinates and ties agree with existing monument.

Westerly witness measured at 38.24'.

*Anthony R. Dallman 8/22/19*



Anthony R. Dallman, PLS-2405

Lincoln County Surveyor

---

# U.S. PUBLIC LAND SURVEY MONUMENT RECORD

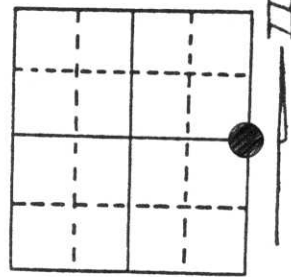
Note: This form is intended and designed to fulfill all requirements of Wisconsin Administrative Code, Chapter A-E 5.02, U.S. Public Land Survey Monument Record (3) (a) (b) (c) (d) (e) (f) (g) (h) (i). An additional sheet may be added if necessary to conform with said requirements.

(a) Corner location: Township 33 North

Range 6 East

Town/City/Village TN. OF ROCK FALLS

County LINCOLN



Section 23

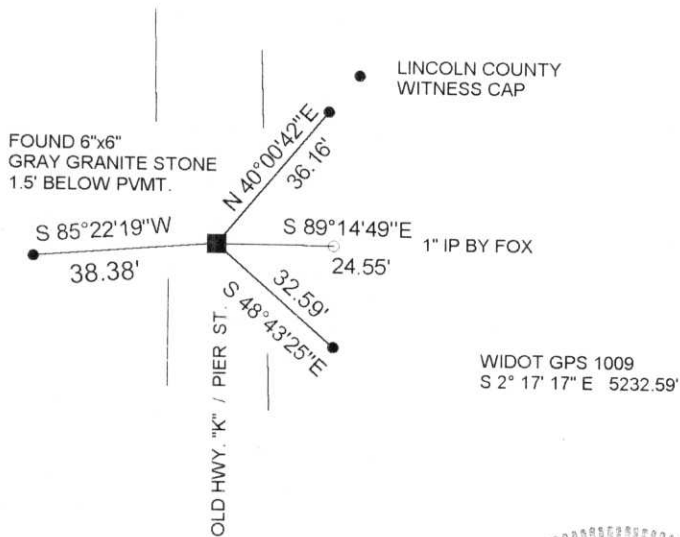
(b) (f) (g) (h) Description of monument found at this corner and if it was accepted, state all evidence (material, testimonial, occupational, plats, records, other monuments) used as a basis for accepting. If not accepted or if nothing was found, state evidence used as basis for establishing location. If reestablished through lost corner proportionate methods, indicate all monuments, distances and directions used to establish.

CORNER HISTORY ON FILE IN COUNTY SURVEYORS OFFICE

EXCAVATED ROAD WESTERLY FROM A FOUND 1" IRON PIPE SET BY FOX IN 1940  
FOUND GRANITE STONE 1.5' BELOW PAVEMENT. FOUND NO EVIDENCE OF DOT TIES  
FROM 1971.

(c) (d) (e) Plan view of corner with ties to at least 4 witness monuments. If in disagreement with previously established corner, show the distances between the two corners and also indicate the ties to the disputed corner.

RECEIVED AT LINCOLN COUNTY  
COURTHOUSE THIS 2nd DAY  
OF June 19 97  
Pat Priebe  
TAX DESCRIPTION OFFICE



(i) I, DAVID L. LEMKE S-1845  
(type or print name) certify that the corner location on this record was determined by me or under my direction and control and that this U.S. Public Land Survey Monument Record is correct and complete to the best of my knowledge and belief.

David L. Lemke  
Signature

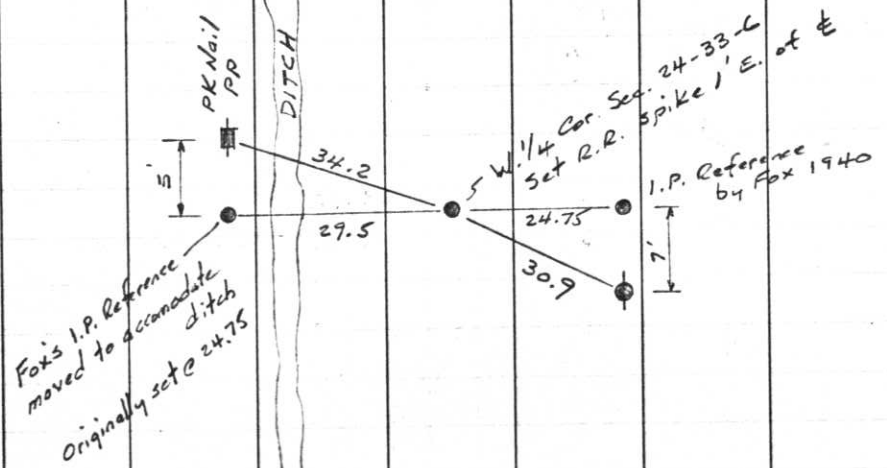
MAY 30 1997  
Date



Index No. 0-21

70.

REFERENCES



Fox's I.P. Reference moved to accommodate ditch Originally set @ 24.75

Project I.D. 1173-5-00 1.4 Mi.N.  
 Merrill-C.T.H. "s" U.S.H. 51  
 Freeway Lincoln County Wm. Scherer  
 Surveyor Received from Division of  
 Hwy's. Jan. 11. 1973

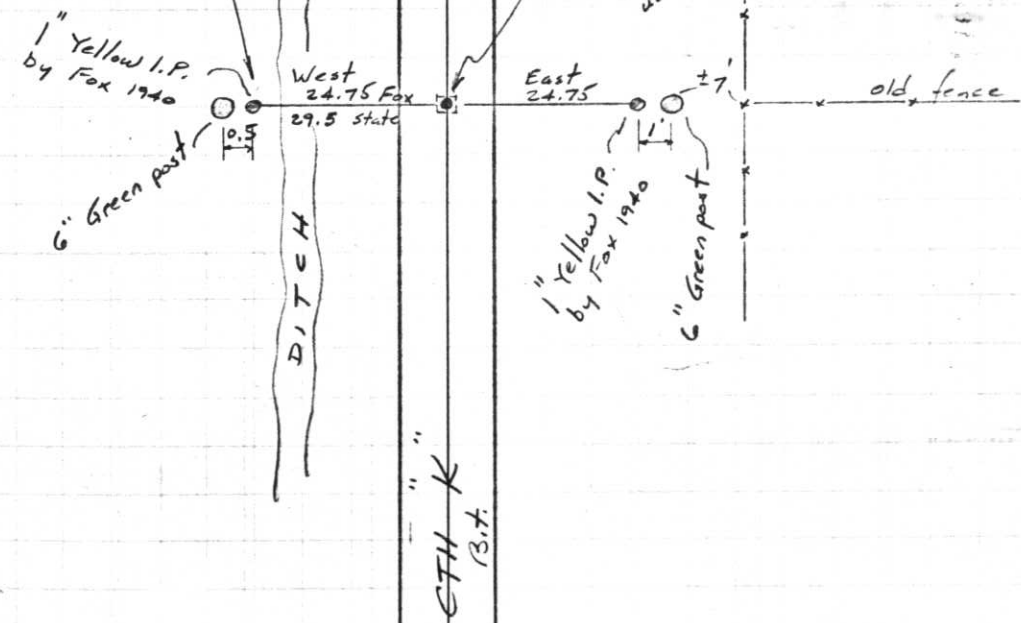
II

Note: This I.P. Reference was moved since 1940 to accommodate ditch

T.33 N

RGE

May 4, 1971



N 54S, 806.22  
 E 2,078, 856.44  
 Stone under surface  
 by Fox 1940  
 Set RR spike 1' E. of E  
 using Fox's east reference I.P.

ETH K  
 13.7









