

Attachment to Tie Sheet Q-21, T33N, R6E

43306230000

I visited the corner on 4/25/2019 to verify the corner and reference tie monumentation before County Road work. I found a surface SMN-1 Nail and all 4 ties from the David Lemke tie sheet (5/30/1997). The established Coordinates and ties agree with existing monument.

Anthony R. Dallman

8/20/19

Anthony R. Dallman, PLS-2405

Lincoln County Surveyor



U.S. PUBLIC LAND SURVEY MONUMENT RECORD

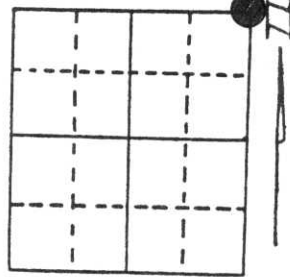
Note: This form is intended and designed to fulfill all requirements of Wisconsin Administrative Code, Chapter A-E 5.02, U.S. Public Land Survey Monument Record (3) (a) (b) (c) (d) (e) (f) (g) (h) (i). An additional sheet may be added if necessary to conform with said requirements.

(a) Corner location: Township 33 North

Range 6 East

Town/City/Village TN. OF ROCK FALLS

County LINCOLN



Section 26

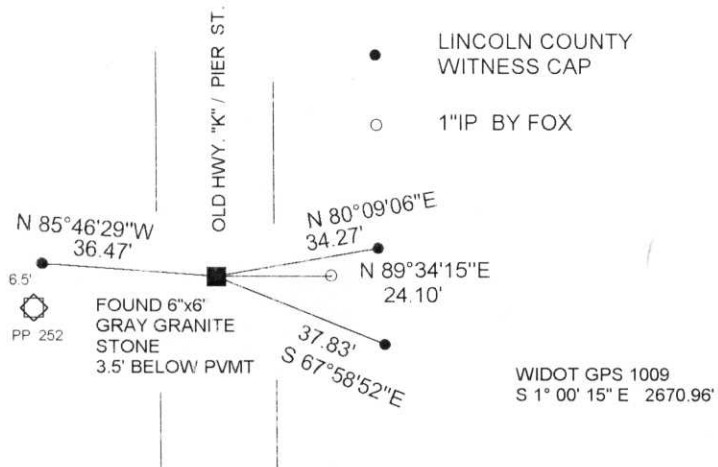
(b) (f) (g) (h) Description of monument found at this corner and if it was accepted, state all evidence (material, testimonial, occupational, plats, records, other monuments) used as a basis for accepting. If not accepted or if nothing was found, state evidence used as basis for establishing location. If reestablished through lost corner proportionate methods, indicate all monuments, distances and directions used to establish.

CORNER HISTORY ON FILE IN COUNTY SURVEYORS OFFICE

APRIL 1997 EXCAVATED ROAD BED WESTERLY OF A FOUND 1" IRON PIPE SET BY FOX IN 1940. FOUND A GRANITE STONE 3.5' BELOW PAVEMENT. NO EVIDENCE OF DOT TIES FROM 1971.

(c) (d) (e) Plan view of corner with ties to at least 4 witness monuments. If in disagreement with previously established corner, show the distances between the two corners and also indicate the ties to the disputed corner.

RECEIVED AT LINCOLN COUNTY
COURTHOUSE THIS 2nd DAY
OF June 19 97
Pat Priebe
TAX DESCRIPTION OFFICE

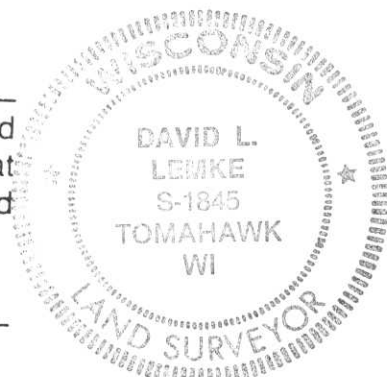


(i) I, DAVID L. LEMKE S-1845
(type or print name) certify that the corner location on this record was determined by me or under my direction and control and that this U.S. Public Land Survey Monument Record is correct and complete to the best of my knowledge and belief.

Signature

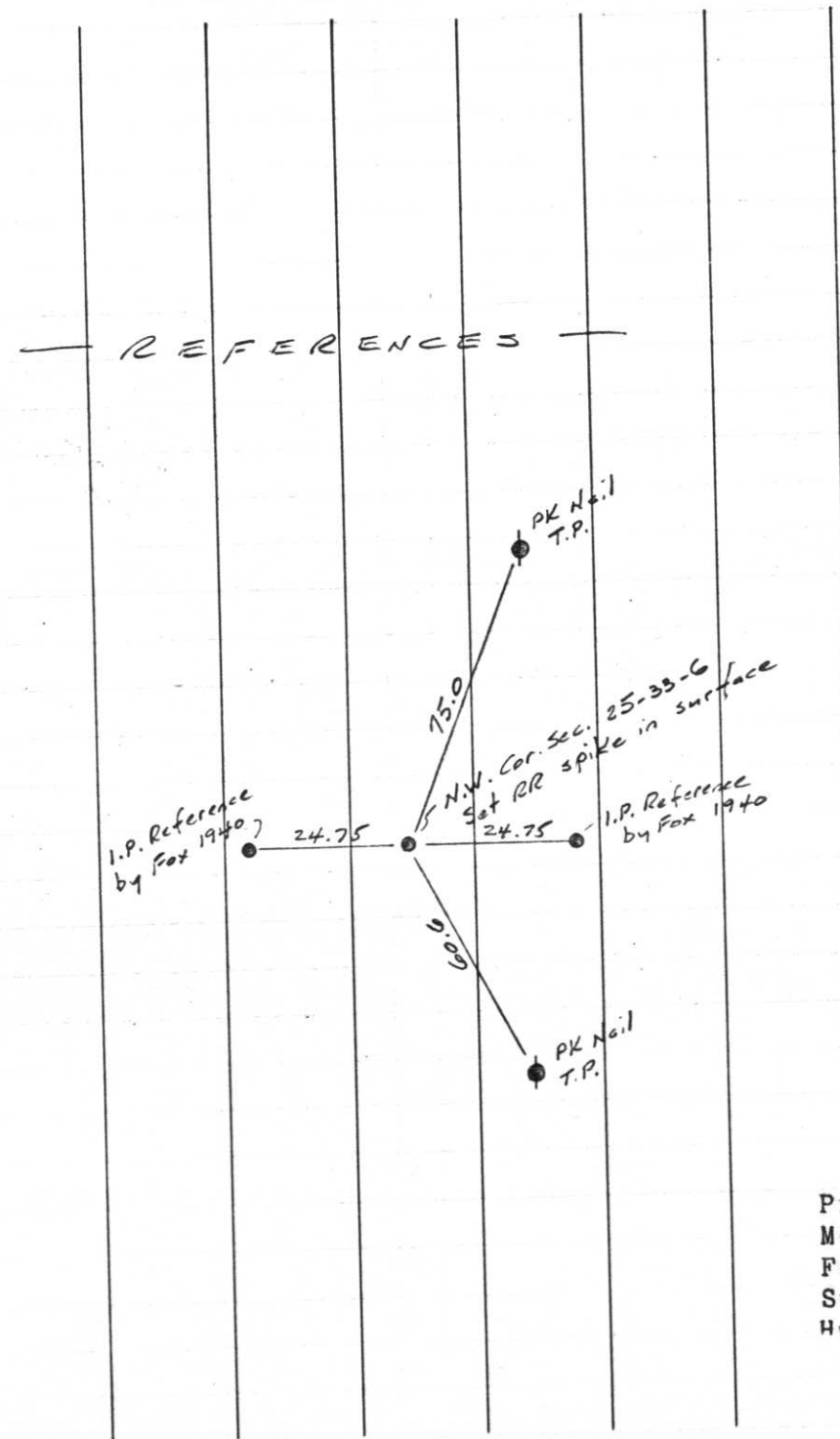
MAY 30 1997

Date



Index No. Q-21

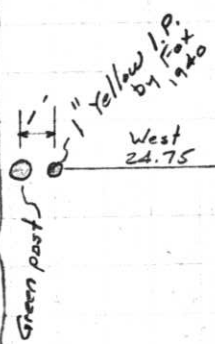
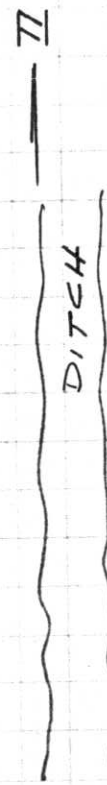
72.



T 33 N

R 6 E

May 4, 1971



"K" 6TH Bit.

N 543,250.02
 E 2,079,023.56
 N.W. Cor. Sec. 25-33-G
 Stone under surface
 by Fox 1940
 Set RR spike in surface
 using Fox's I.P. references
 "Yellow I.P. by Fox 1940"

East 24.75

Project I.D. 1173-5-00 1.4 Mi.N.
 Merrill-C.T.H. "s" U.S.H. 51
 Freeway Lincoln County Wm. Scherer
 Surveyor Received from Division of
 Hwy's. Jan. 11.1973









