

U.S. PUBLIC LAND SURVEY MONUMENT RECORD

NOTE: THIS FORM IS INTENDED AND DESIGNED TO FULFILL ALL REQUIREMENTS OF WISCONSIN ADMINISTRATIVE CODE, CHAPTER A-E 7.08, U.S. PUBLIC LAND SURVEY MONUMENT RECORD (3) (A) (B) (C) (D) (E) (F) (G) (H) (I). AN ADDITIONAL SHEET MAY BE ADDED IF NECESSARY TO CONFORM WITH SAID REQUIREMENTS.

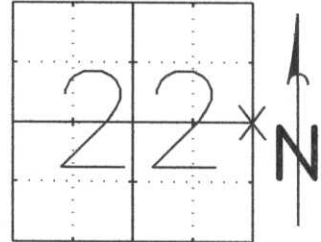
LINCOLN COUNTY

(A) SECTION 22

TOWNSHIP 33 NORTH

RANGE 6 EAST

TOWN, CITY, VILLAGE: ROCK FALLS



INDICATE CORNER LOCATION BY X

(B) (F) (G) (H) DESCRIPTION OF MONUMENT FOUND AT THIS CORNER AND IF IT WAS ACCEPTED, STATE ALL EVIDENCE (MATERIALS, TESTIMONIAL, OCCUPATIONAL, PLATS, RECORDS, OTHER MONUMENTS) USED AS A BASIS FOR ACCEPTING. IF NOT ACCEPTED OR IF NOTHING WAS FOUND, STATE EVIDENCE USED AS A BASIS FOR ESTABLISHING LOCATION. IF REESTABLISHED THROUGH LOST CORNER PROPORTIONATE METHODS, INDICATE ALL MONUMENTS, DISTANCES, AND DIRECTIONS USED TO ESTABLISH.

TRAVERSED FROM WEST 1/4 CORNER TO NORTHEAST CORNER TO EAST 1/4 CORNER. PROJECTED FRANCIS FOX NOTES FOR DISTANCES. SEARCHED AND FOUND STONE IN PLACE AT LOCATION THAT AGREES WITH FOX DISTANCE CALLS. DID NOT ACCEPT BERNTSEN MONUMENT.

(C) (D) (E) PLAN VIEW OF CORNER WITH TIES TO AT LEAST 4 WITNESS MONUMENTS. IF IN DISAGREEMENT WITH PREVIOUSLY ESTABLISHED CORNER, SHOW THE DISTANCES BETWEEN THE TWO CORNERS AND ALSO INDICATE THE TIES TO THE DISPUTED CORNER.

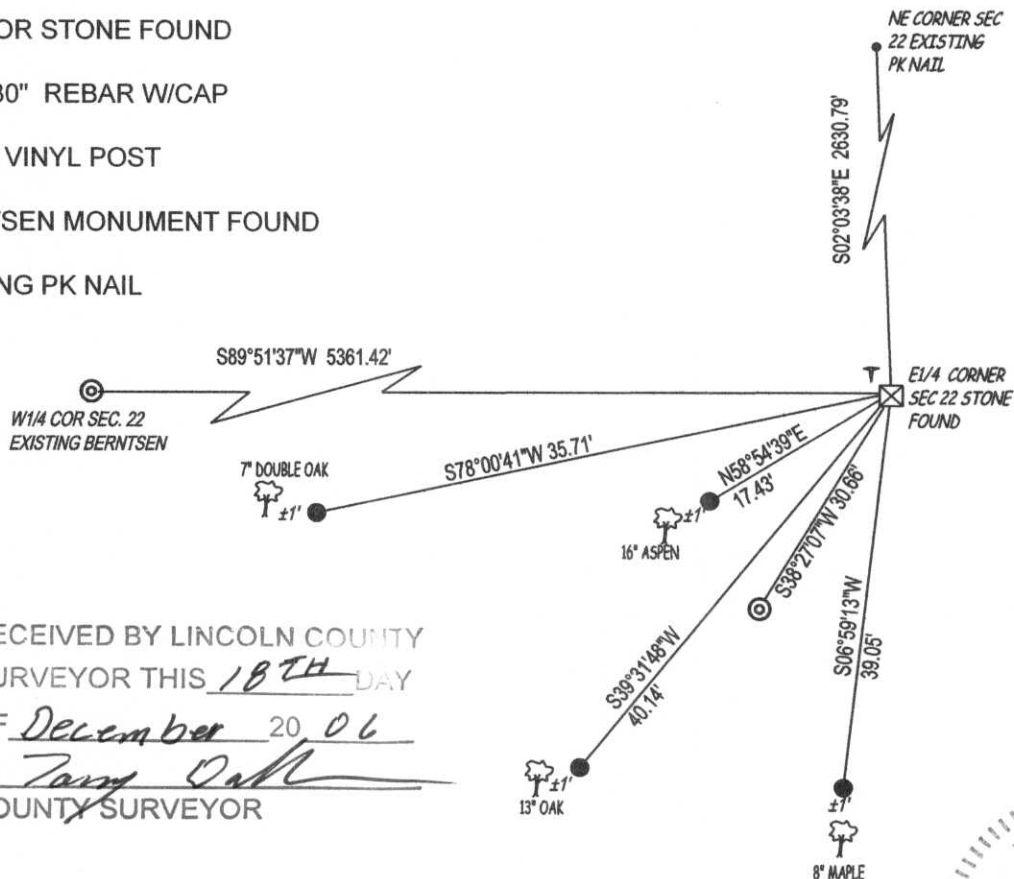
S1/4 COR STONE FOUND

● 7/8" X 30" REBAR W/CAP

⊣ WHITE VINYL POST

⊙ BERNTSEN MONUMENT FOUND

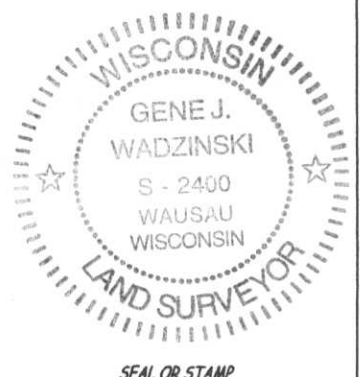
• EXISTING PK NAIL



RECEIVED BY LINCOLN COUNTY
SURVEYOR THIS 18TH DAY
OF December 20 06
Gene J. Wadzinski
COUNTY SURVEYOR

(I) I, GENE J. WADZINSKI RLS 2400
(TYPE OR PRINT NAME, LICENSE #) CERTIFY THAT THE CORNER LOCATION
ON THIS RECORD WAS DETERMINED BY ME OR UNDER MY DIRECTION AND
CONTROL AND THAT THIS U.S. PUBLIC LAND SURVEY MONUMENT RECORD
IS CORRECT AND COMPLETE TO THE BEST OF MY KNOWLEDGE AND
BELIEF.

SIGNATURE Gene J. Wadzinski DATE 12/15/06

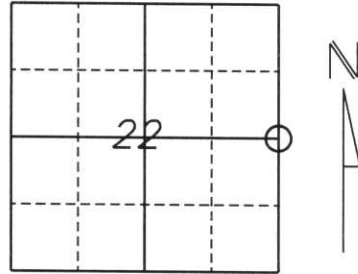


SEAL OR STAMP

U.S. PUBLIC LAND SURVEY MONUMENT RECORD

Note: This form is intended and designed to fulfill all requirements of Wisconsin Administrative Code, Chapter A-E 5.02, U.S. Public Land Survey Monument Record (3) (a) (b) (c) (d) (e) (f) (g) (h) (i). An additional sheet may be added if necessary to conform with said requirements.

(a) Corner location: Township 33 North
 Range 6 East
 Town/City/Village ROCK FALLS
 County LINCOLN



Section 22

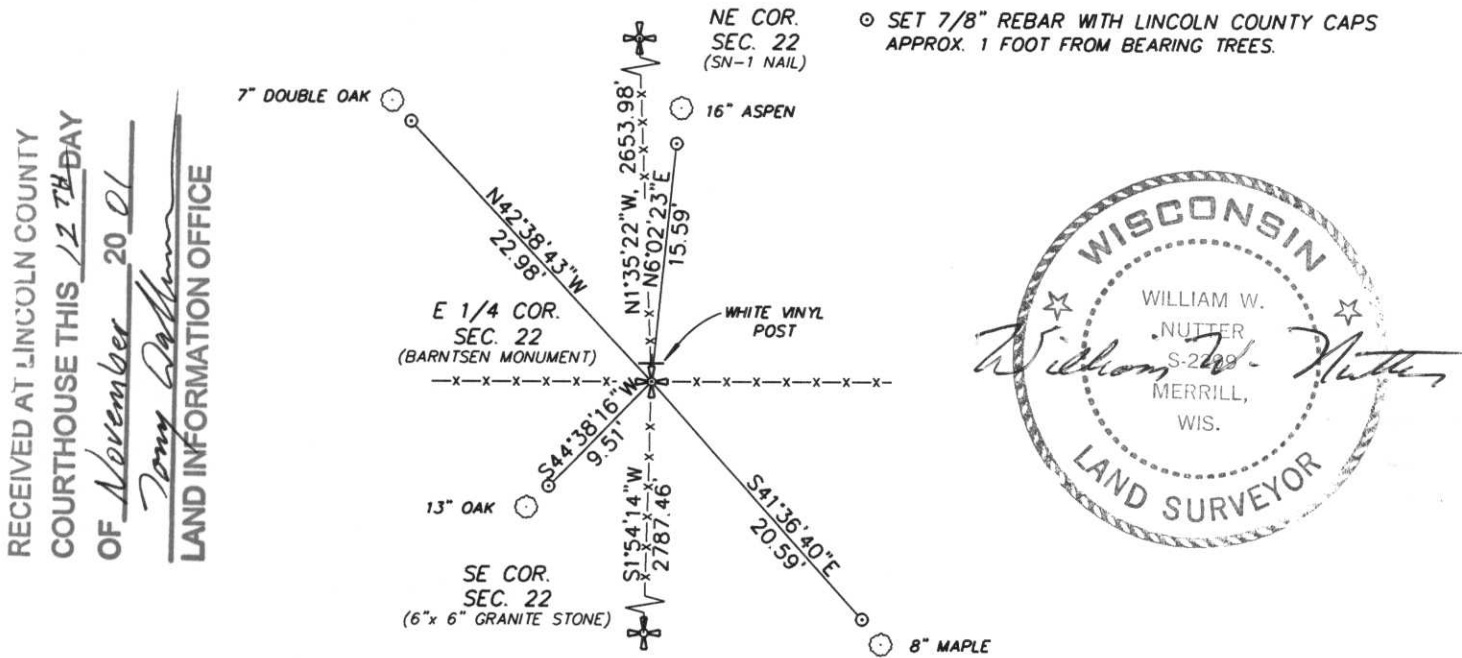
(b) (f) (g) (h) Description of monument found at this corner and if it was accepted, state all evidence (material, testimonial, occupational, plats, records, other monuments) used as a basis for accepting. If not accepted or if nothing was found, state evidence used as a basis for establishing location. If reestablished through lost corner proportionate methods, indicate all monuments, distances and directions used to establish.

The original corner was established by Jackson L. Prentice in November, 1854. Original bearing trees:
 10" Birch, N87°W, 15 lks.
 10" Hemlock, N78°E, 20 lks.

Francis X. Fox (Fuchs) set a stone in April, 1943 with bearing trees:
 5" Oak, N10°E, 19.1'
 6" Oak, S31°W, 17.3'

Found an intersection of fences in all (4) cardinal directions. Did not find any evidence of Fox's survey. Set Berntsen Monument and (4) 7/8" rebar with Lincoln County caps as ties. Ties are set approx. 1 foot from all bearing trees.

(c) (d) (e) Plan view of corner with ties to at least 4 witness monuments. If in disagreement with previously established corner, show the distances between the two corners and also indicate the ties to the disputed corner.



RECEIVED AT LINCOLN COUNTY
 COURTHOUSE THIS 12 TH DAY
 OF November 20 01
Tony Dalton
 LAND INFORMATION OFFICE



(i) I, William W. Nutter RLS, S-2299
 (type or print name) certify that the corner location on this record was determined by me or under my direction and control and that this U.S. Public Land Survey Monument Record is correct and complete to the best of my knowledge and belief.

William W. Nutter 11-9-01
 Signature Date

Index No.

0-17









