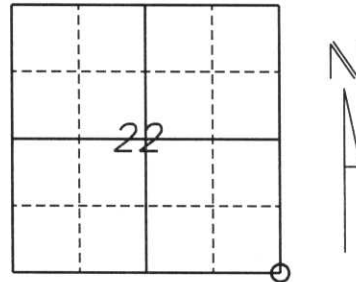


U.S. PUBLIC LAND SURVEY MONUMENT RECORD

Note: This form is intended and designed to fulfill all requirements of Wisconsin Administrative Code, Chapter A-E 5.02, U.S. Public Land Survey Monument Record (3) (a) (b) (c) (d) (e) (f) (g) (h) (i). An additional sheet may be added if necessary to conform with said requirements.

(a) Corner location: Township 33 North
 Range 6 East
 Town/City/Village HARRISON
 County LINCOLN



Section 22

(b) (f) (g) (h) Description of monument found at this corner and if it was accepted, state all evidence (material, testimonial, occupational, plats, records, other monuments) used as a basis for accepting. If not accepted or if nothing was found, state evidence used as a basis for establishing location. If reestablished through lost corner proportionate methods, indicate all monuments, distances and directions used to establish.

The original corner was established by Jackson L. Prentice in November, 1854. Original bearing trees:

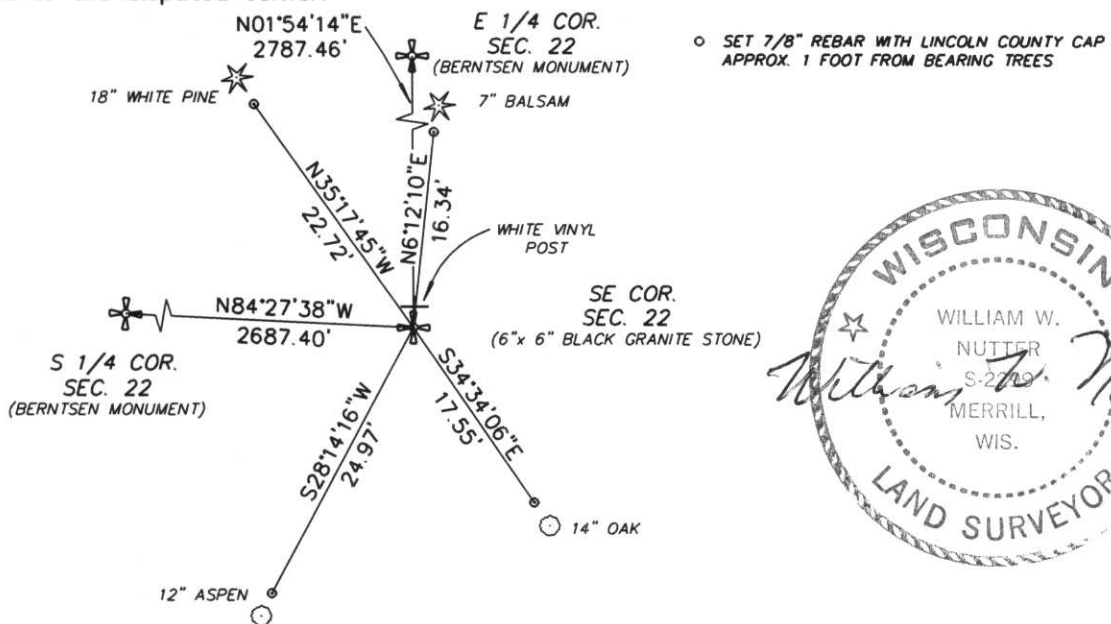
- 12" Pine, S55°W, 14 lks.
- 14" Tamarac, S47°E, 29 lks.
- 12" Tamarac, N89°E, 24 lks.
- 12" Tamarac, N57°W, 21 lks.

Revisited in April of 1943 by Francis X. Fox (Fuchs) and found nothing. Set a 6"x 6" black granite stone by double proportionate measurement. Bearing trees:

- 12" Pine, S17°W, 67.8'
- 10" Pine Stump, S63°E, 22.5'

Found a 6" X 6" black granite stone. Set (4) 7/8" rebars with Lincoln County caps as witness monuments. Set approx. 1 foot from bearing trees.

(c) (d) (e) Plan view of corner with ties to at least 4 witness monuments. If in disagreement with previously established corner, show the distances between the two corners and also indicate the ties to the disputed corner.



RECEIVED AT LINCOLN COUNTY
 COURTHOUSE THIS 12 TH DAY
 OF November 20 01
 Land Information Office



(i) I, William W. Nutter RLS, S-2299
 (type or print name) certify that the corner location on this record was determined by me or under my direction and control and that this U.S. Public Land Survey Monument Record is correct and complete to the best of my knowledge and belief.

William W. Nutter

11-9-01

Signature

Date

Index No.

Q-17









