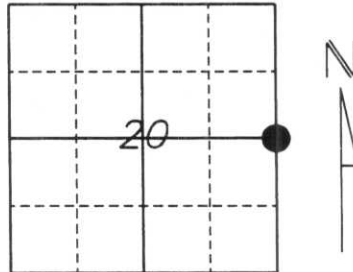


U.S. PUBLIC LAND SURVEY MONUMENT RECORD

Note: This form is intended and designed to fulfill all requirements of Wisconsin Administrative Code, Chapter A-E 5.02, U.S. Public Land Survey Monument Record (3) (a) (b) (c) (d) (e) (f) (g) (h) (l). An additional sheet may be added if necessary to conform with said requirements.

(a) Corner location: Township 33 North
 Range 6 East
 Town/City/Village ROCK FALLS
 County LINCOLN



Section 20

(b) (f) (g) (h) Description of monument found at this corner and if it was accepted, state all evidence (material, testimonial, occupational, plats, records, other monuments) used as a basis for accepting. If not accepted or if nothing was found, state evidence used as a basis for establishing location. If reestablished through lost corner proportionate methods, indicate all monuments, distances and directions used to establish.

History of original corner establishment:

The original corner was established by Jackson L. Prentice on October 27, 1854. Original corner was a wooden post with bearing trees:

- 12" Birch, S73°W, 72 lks.
- 14" Birch, S80°E, 55 lks.

Francis X. Fox (Fuchs) set a stone in 1940 with witness monuments:

- Iron Pipe, N 24.75'
- Iron Pipe, S 24.75'

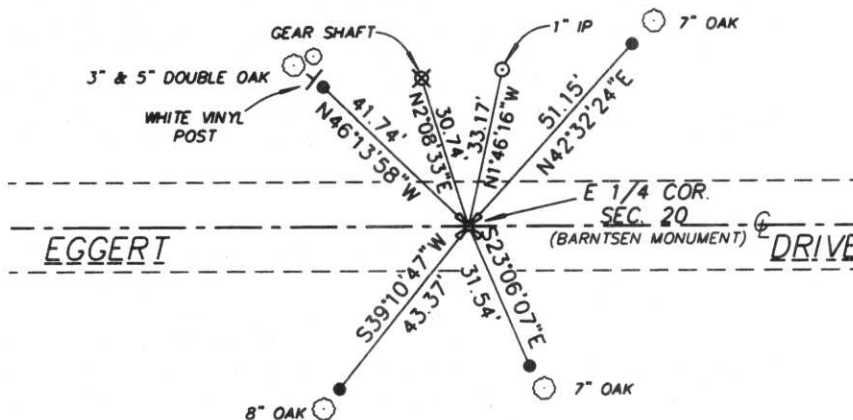
Description of corner evidence found:

We located a Berntsen Monument approximately 3" below gravel surface of Eggert Drive. We accepted this position and tied to 7/8" Iron Rebar as witness monuments.

(c) (d) (e) Plan view of corner with ties to at least 4 witness monuments. If in disagreement with previously established corner, show the distances between the two corners and also indicate the ties to the disputed corner.

* NOTE: Drawing is not to scale.

- All ties are to 7/8" Rebar with Lincoln County Caps approximately 2 feet from bearing trees.



3/3/06

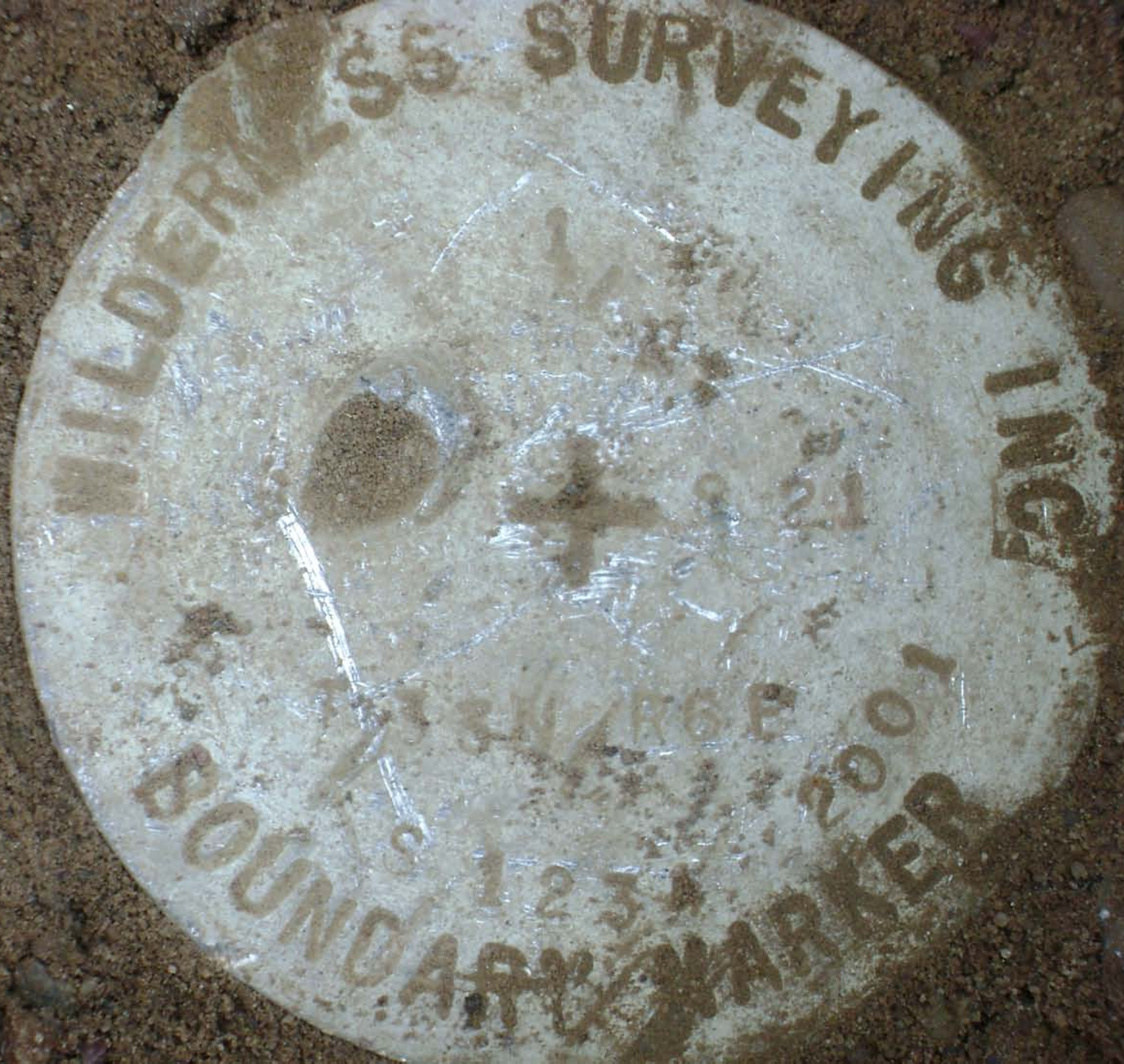
(l) I, William W. Nutter RLS, S-2299
 (type or print name) certify that the corner location on this record was determined by me or under my direction and control and that this U.S. Public Land Survey Monument Record is correct and complete to the best of my knowledge and belief.

William W. Nutter
 Signature

9-11-2003
 Date

Index No

6-9



WILDERNESS

SURVEYING

ING

BOUNDARY MARKER

21







