

U.S. PUBLIC LAND SURVEY MONUMENT RECORD

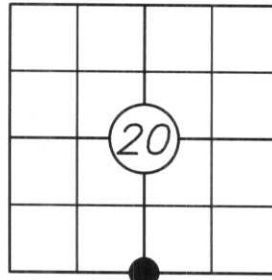
Note: This form is intended and designed to fulfill all requirements of Wisconsin Administrative Code, Chapter A-E 5.02, U.S. Public Land Survey Monument Record (3) (a) (b) (c) (d) (e) (f) (g) (h) (i). An additional sheet may be added if necessary to conform with said requirements.

(a) Corner location: Township 33 North

Range 6 East

Town/City/Village ROCK FALLS

County LINCOLN



Section 20

(b) (f) (g) (h) Description of monument found at this corner and if it was accepted, state all evidence (material, testimonial, occupational, plats, records, other monument(s) used as a basis for accepting. If not accepted or if nothing was found, state evidence used as a basis for establishing location. If reestablished through last corner proportionate methods, indicate all monuments, distances and directions used to establish.

History of original corner established:

Original Survey by Jackson L. Prentice, November 6, 1854

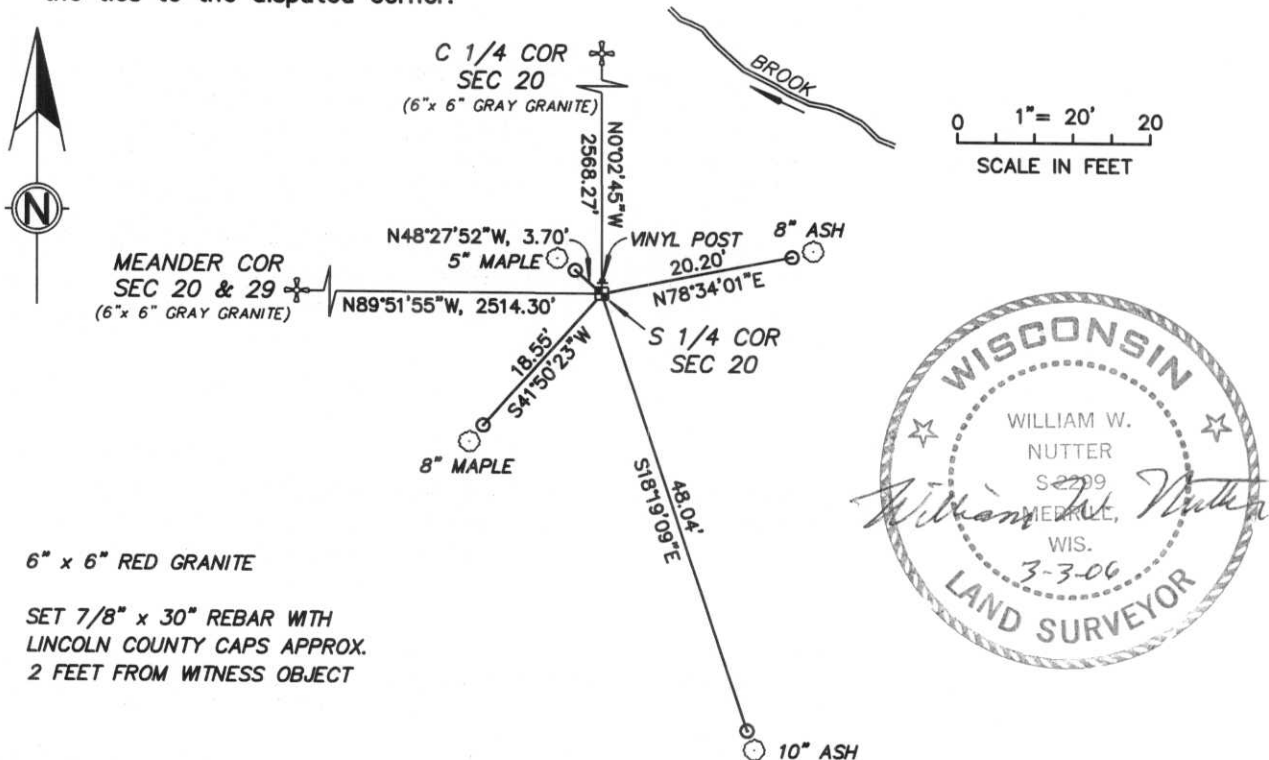
Set post with the following bearing trees: 14" Pine, S29°E, 45 links
12" Ash, N46°E, 54 links

Red granite set by unknown surveyor.

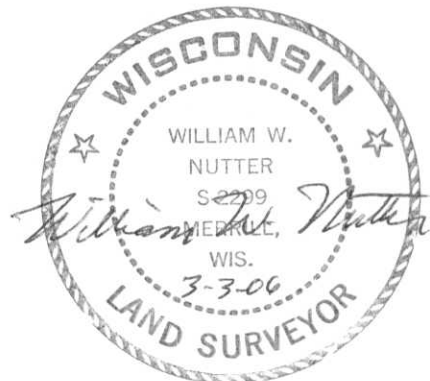
Description of corner evidence found:

We found a 6" x 6" red granite stone, protruding approximately 1 foot above the ground, leaning to the Southeast approximately 35 feet Southwest of a small brook flowing Northwest. We straightened the stone and accepted its location.

(c) (d) (e) Plan view of corner with ties to at least 4 witness monuments. If in disagreement with previous established corner, show the distance between the two corners and also indicate the ties to the disputed corner.



- 6" x 6" RED GRANITE
- SET 7/8" x 30" REBAR WITH LINCOLN COUNTY CAPS APPROX. 2 FEET FROM WITNESS OBJECT



(i) I, William W. Nutter RLS, S-2299

(type or print name) certify that the corner location on this record was determined by me or under my direction and control and that this U.S. Public Land Survey Monument Record is correct and complete to the best of my knowledge and belief.

William W. Nutter
Signature

3-2-2006
Date

Index No.

0-7

20
—
29







