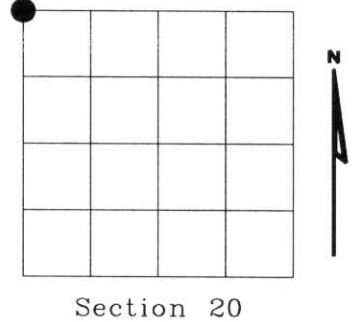


# U.S. PUBLIC LAND SURVEY MONUMENT RECORD

NOTE: This form is intended and designed to fulfill all requirements of Wisconsin Administrative Code, Chapter A-E 7.08 U.S. Public Land Survey Monument Record (3)(a)(b)(c)(d)(e)(f)(g)(h)(i). An additional sheet may be added if necessary to conform with said requirements.

(a) Corner location: Township 33 North  
Range 06 East  
Town of ROCK FALLS  
LINCOLN County, Wisconsin



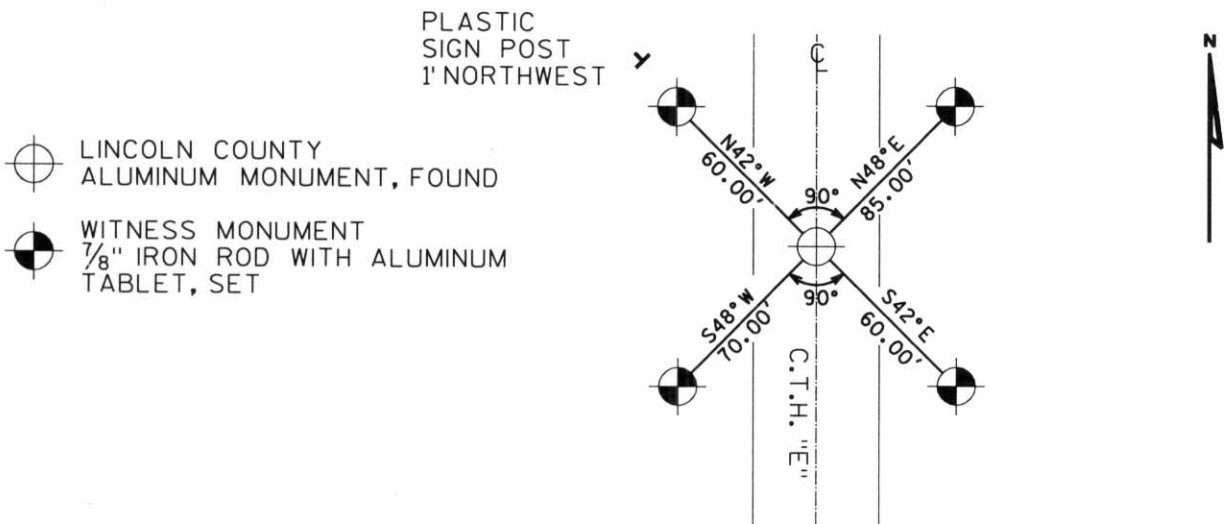
Section 20

(b)(f)(g)(h) Description of monument found at this corner and if it was accepted, state all evidence (material, testimonial, occupational, plats, records, other monuments) used as a basis for accepting. If not accepted or if nothing was found, state evidence used as basis for establishing location. If reestablished through lost corner proportionate methods, indicate all monuments, distances and directions used to establish. Indicate type of monument found or set and sign post.

- 1943 - FRANCIS X. FOX SET SECTION CORNER STONE IN ROAD.
- 1988 - LINCOLN CO. BERNSTEN MONUMENT SET BY CO. HWY. DEPT. AT TIME OF RECONSTRUCTION OF HWY "E". TIE INFORMATION SUPPLIED BY RAY KLOSS.
- 2000 - I FIND LINCOLN CO. BERNSTEN MONUMENT AND WITNESS AS SHOWN IN SKETCH BELOW.

RECEIVED AT LINCOLN COUNTY  
COURTHOUSE THIS 10<sup>TH</sup> DAY  
OF August 2000  
Tony Dallman  
LAND INFORMATION OFFICE

(c)(d)(e) Plan view of corner with ties to at least 4 witness monuments. If in disagreement with previously established corner, show the distances between the two corners and also indicate the ties to the disputed corner.



(i) I, Dennis B. Roberts, Registered Land Surveyor \*S-1863, hereby certify that the corner location on this record was determined by me or under my direction and control and that this U.S. Public Land Survey Monument Record is correct and complete to the best of my knowledge and belief.



Dennis B. Roberts 8-08-2000  
Signature Date

Index No. M-5

# U.S. PUBLIC LAND SURVEY MONUMENT RECORD

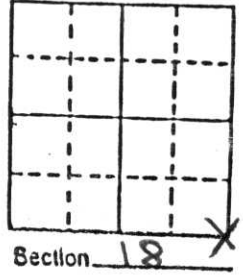
Note: This form is intended and designed to fulfill all requirements of Wisconsin Administrative Code, Chapter A-E 5.02, U.S. Public Land Survey Monument Record (3) (a) (b) (c) (d) (e) (f) (g) (h) (i). An additional sheet may be added if necessary to conform with said requirements.

(a) Corner location: Township 33 North

Range 6 East

Town Rock Falls

County Lincoln County



b) (f) (g) (h) Description of monument found at this corner and if it was accepted, state all evidence (material, testimonial, occupational, plats, records, other monuments) used as a basis for accepting. If not accepted or if nothing was found, state evidence used as basis for establishing location. If reestablished through lost corner proportionate methods, indicate all monuments, distances and directions used to establish.

Lincoln Co Berntsen Monument  
Set by Co Hwy Dept at time  
of Hwy E Reconstruction  
Tie information supplied by  
Ray Klass 7-23-88

c) (d) (e) Plan view of corner with ties to at least 4 witness monuments. If in disagreement with previously established corner, show the distances between the two corners and also indicate the ties to the disputed corner.

(i) I, \_\_\_\_\_  
(type or print name) certify that the corner location on this record was determined by me or under my direction and control and that this U.S. Public Land Survey Monument Record is correct and complete to the best of my knowledge and belief.

Signature

Date

Index No. M-5



COUNTY K  
STURBING

R  
K  
R



