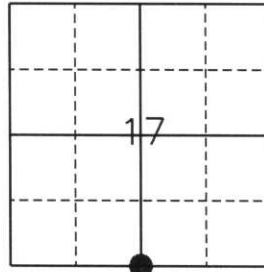


U.S. PUBLIC LAND SURVEY MONUMENT RECORD

Note: This form is intended and designed to fulfill all requirements of Wisconsin Administrative Code, Chapter A-E 5.02, U.S. Public Land Survey Monument Record (3) (a) (b) (c) (d) (e) (f) (g) (h) (i). An additional sheet may be added if necessary to conform with said requirements.

(a) Corner location: Township 32 North
 Range 6 East
 Town/City/Village ROCK FALLS
 County LINCOLN



Section 17

(b) (f) (g) (h) Description of monument found at this corner and if it was accepted, state all evidence (material, testimonial, occupational, plats, records, other monuments) used as a basis for accepting. If not accepted or if nothing was found, state evidence used as a basis for establishing location. If reestablished through lost corner proportionate methods, indicate all monuments, distance and directions used to establish.

History of original corner establishment:

The original corner was established by Albert G. and Fredrick S. Ellis on April 26, 1852. Original corner was a wooden post with bearing trees:

- 8" Birch S23°E, 37 lks.
- 8" Birch N8°W, 24 lks.

Francis Fox (Fuchs) set a stone June 1, 1940 with bearing trees:

- Tamarac N50°W, 29.2'
- Tamarac N46°E, 30.8'

Description of corner evidence found:

We located a 5" x 5" Gray Granite Stone along an old East-West flagged line, with old bearing trees either dead or down. We accepted the Granites position and tied to 7/8" Iron Rebar as witness monuments.

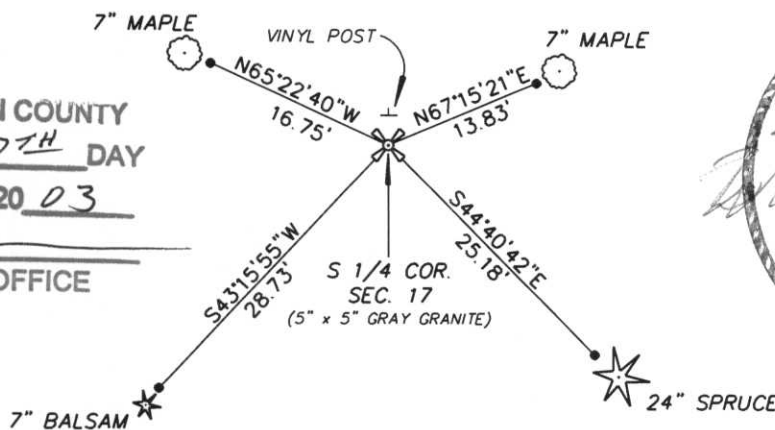
(c) (d) (e) Plan view of corner with ties to at least 4 witness monuments. If in disagreement with previously established corner, show the distances between the two corners and also indicate the ties to the disputed corner.

* NOTE: Drawing is not to scale.

- All ties are to 7/8" Rebar with Lincoln County Caps approximately 2 feet from bearing trees.



RECEIVED AT LINCOLN COUNTY
 COURTHOUSE THIS 27TH DAY
 OF October 20 03
Tony Dull
 LAND INFORMATION OFFICE



(i) I, William W. Nutter RLS, S-2299
 (type or print name) certify that the corner location on this record was determined by me or under my direction and control and that this U.S. Public Land Survey Monument Record is correct and complete to the best of my knowledge and belief.

William W. Nutter, RLS

9-11-2003

Signature

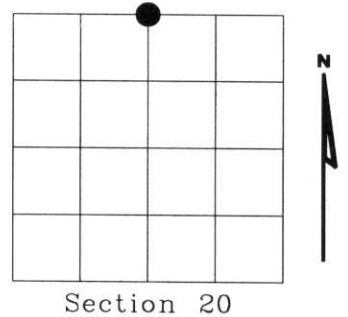
Date

Index No. M-2

U.S. PUBLIC LAND SURVEY MONUMENT RECORD

NOTE: This form is intended and designed to fulfill all requirements of Wisconsin Administrative Code, Chapter A-E 7.08 U.S. Public Land Survey Monument Record (3)(a)(b)(c)(d)(e)(f)(g)(h)(i). An additional sheet may be added if necessary to conform with said requirements.

(a) Corner location: Township 33 North
 Range 06 East
 Town of ROCK FALLS
 LINCOLN County, Wisconsin



Section 20

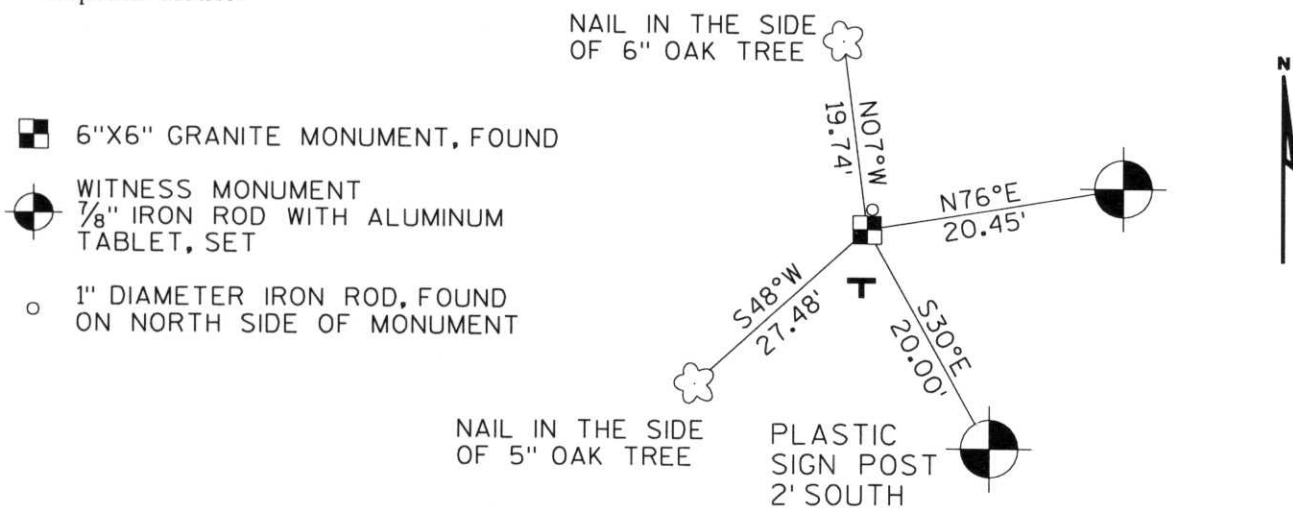
(b)(f)(g)(h) Description of monument found at this corner and if it was accepted, state all evidence (material, testimonial, occupational, plats, records, other monuments) used as a basis for accepting. If not accepted or if nothing was found, state evidence used as basis for establishing location. If reestablished through lost corner proportionate methods, indicate all monuments, distances and directions used to establish. Indicate type of monument found or set and sign post.

1943 - FRANCIS X. FOX SET 1/4 STONE.

2000 - I FIND A 6" X 6" GRANITE MONUMENT IN ROCK PILE, A 1" DIAMETER IRON PIPE ON NORTH SIDE AND A PLASTIC SIGN POST 2' SOUTH, WITNESS AS SHOWN IN SKETCH BELOW.

RECEIVED AT LINCOLN COUNTY
 COURTHOUSE THIS 10TH DAY
 OF August 20 00
Tony Dallman
 LAND INFORMATION OFFICE

(c)(d)(e) Plan view of corner with ties to at least 4 witness monuments. If in disagreement with previously established corner, show the distances between the two corners and also indicate the ties to the disputed corner.



(i) I, Dennis B. Roberts, Registered Land Surveyor *S-1863, hereby certify that the corner location on this record was determined by me or under my direction and control and that this U.S. Public Land Survey Monument Record is correct and complete to the best of my knowledge and belief.



Dennis B. Roberts 8-08-2000
 Signature Date

Index No. M-7