

LINCOLN COUNTY U.S. PUBLIC LAND SURVEY MONUMENT LOCATION RECORD

SECTION _____
TOWNSHIP 33 N
RANGE 7 E

G-1
NO.

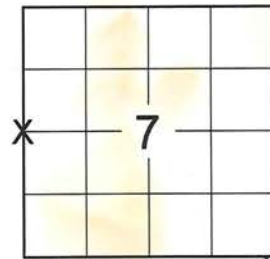
LANDMARK BENCHMARK _____

FOUND
SET
RESET
RE-TIED

CORNER IDENTITY: LINCOLN COUNTY MONUMENT

BIRCH
CITY, VILLAGE, TOWN

LINCOLN COUNTY COORDINATE: N: 187618.4290
E: 396597.8010



ELEVATION-(FEET): _____ DATUM: _____

WEATHER: SUNNY

DATE OF SURVEY: 7/30/2014 TEMPERATURE: 70 °F

SURVEY PARTY: CHRISTOPHER FIERI / IAN FIELD

BASIS FOR MONUMENT LOCATION:

(DESCRIBE METHOD OF SURVEY AND CORNER AUTHENTICATION)

7/30/2014 - I visited this corner location and found no monument. Recovered a 1-1/4" Iron Pipe laying down in the East ditch of the road believed to have been set by Francis Fox during the re-monumentation of the Town of Rock Falls. Visited the Northwest corner of the SW 1/4 of the SW 1/4 and recovered the Iron pipe set by Fox and the witness monument to the East. I then visited the Northwest Corner of the SW 1/4 of the NW 1/4, but could not locate the iron pipe set by Fox due to excavating that had been done in the area. I doubled over the bearing and distance from the Southwest Corner of the section to the 40 Corner recovered at the Northwest corner of the SW 1/4 - SW 1/4 to re-establish this corner location. This checked reasonably well with the distances shown in Fox's notes for single proportionate measure. Set a Lincoln County Monument at the corner and set witness monuments to perpetuate the corner location as shown below.

LOCATION (Indicated By)



FIELD BOOK NO. 39 PAGE NO. 45

COMPANY RIVERSIDE LAND SURVEYING LLC

CERTIFIED CORRECT:

Christopher L. Fieri

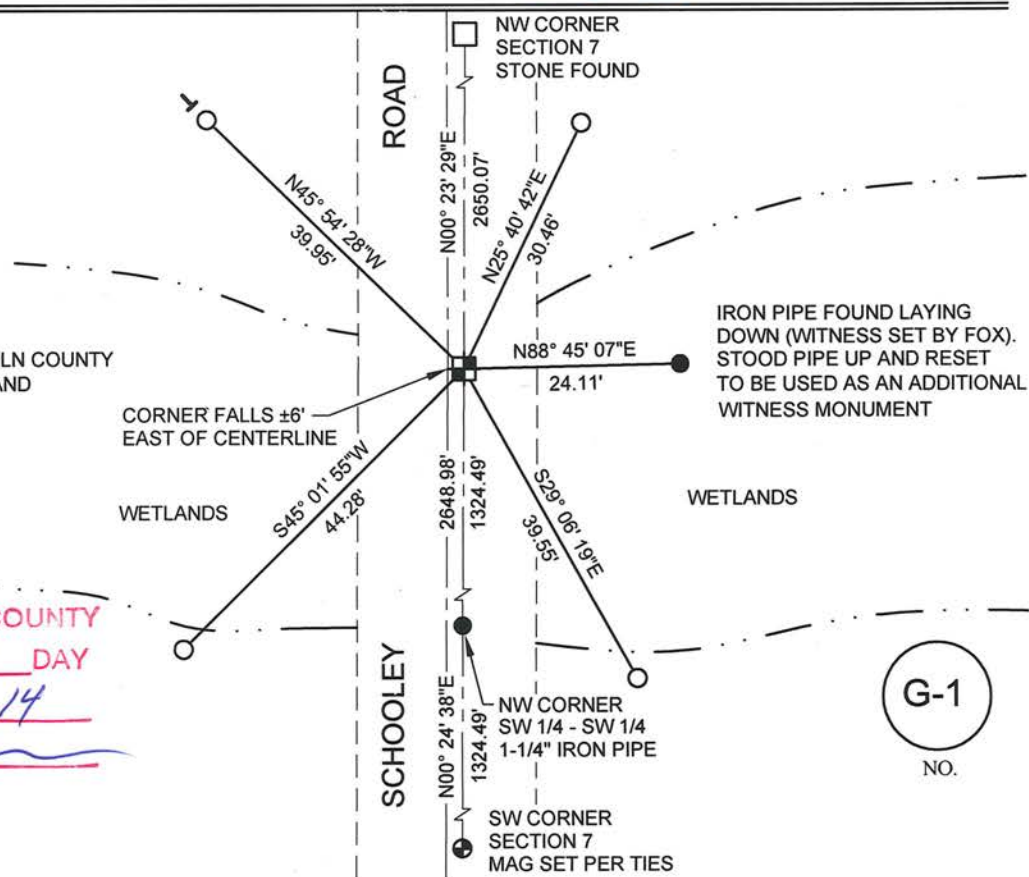
Christopher L. Fieri S-2954
Professional Land Surveyor

DATE: 8-25-2014

TIE SKETCH:

- LINCOLN COUNTY MONUMENT
- - SET 7/8" x 24" IRON BAR WITH CAP
- - FOUND 1-1/4" O.D. IRON PIPE
- T - SET VINYL T - POST

- BEARINGS ARE BASED ON THE LINCOLN COUNTY COORDINATE SYSTEM NAD83 (2011) AND REFERENCED AS SHOWN HEREON.
- DRAWING IS NOT TO SCALE



RECEIVED BY LINCOLN COUNTY
SURVEYOR THIS 2ND DAY
OF September 20 14
Tom Dahl
COUNTY SURVEYOR

G-1
NO.