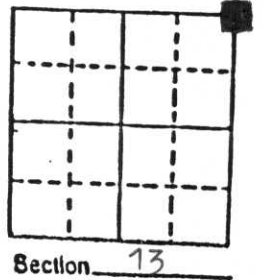


U.S. PUBLIC LAND SURVEY MONUMENT RECORD

Note: This form is intended and designed to fulfill all requirements of Wisconsin Administrative Code, Chapter A-E 5.02, U.S. Public Land Survey Monument Record (3) (a) (b) (c) (d) (e) (f) (g) (h) (i). An additional sheet may be added if necessary to conform with said requirements.

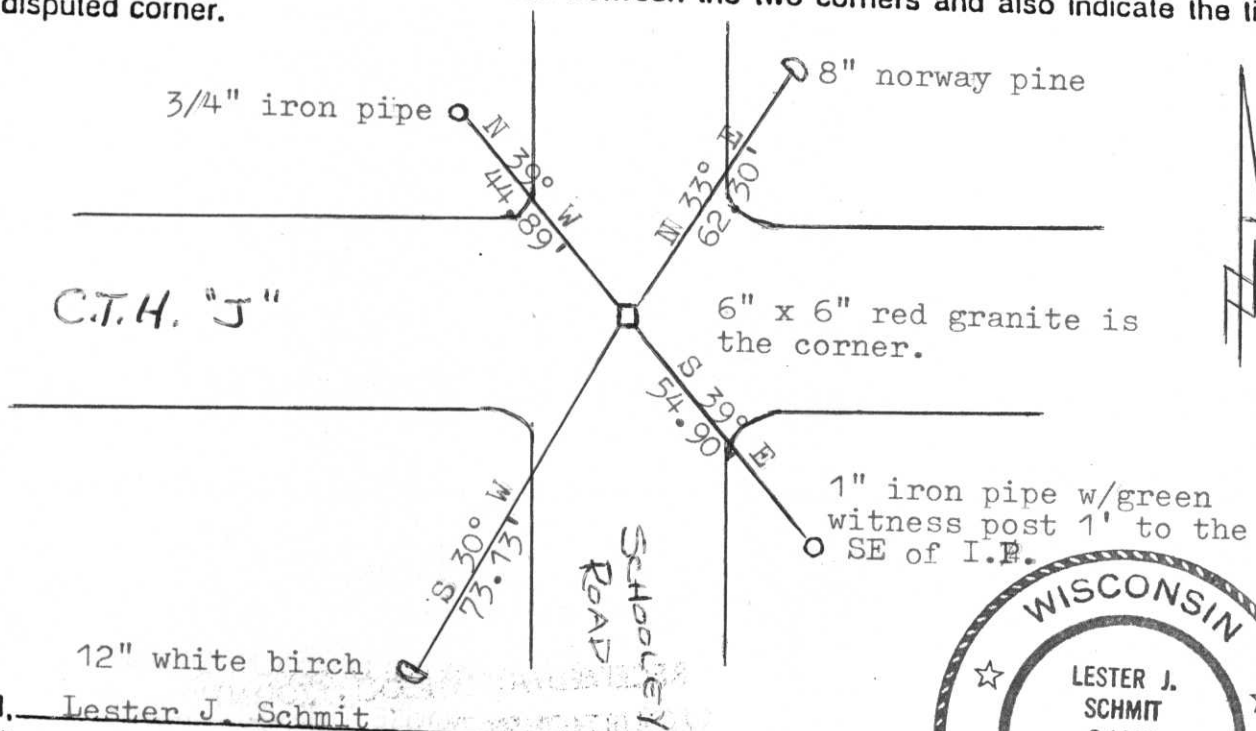
(a) Corner location: Township 33 North
 Range 6 East

Town Rock Falls
 County Lincoln



b) (f) (g) (h) Description of monument found at this corner and if it was accepted, state all evidence (material, testimonial, occupational, plats, records, other monuments) used as a basis for accepting. If not accepted or if nothing was found, state evidence used as basis for establishing location. If reestablished through lost corner proportionate methods, indicate all monuments, distances and directions used to establish. Original Gov't. Survey: Aug. 1851 by James M. Marsh, set wood post for corner with bearings, sugar 8 S 52 E 21 links, birch 12 S 12 W 36 links, birch 12 N 23 W 4 links & birch 8 N 61 E 9 links. On a survey by Fran Fox for the Town of Rock Falls in the 1930's, he set a 6" x 6" red granite monument for the corner. I found the stone 18" below the surface of County Trunk Highway "J". Corner is at the intersection of the centre-line of C.T.H. "J" & Schooley Road.

c) (d) (e) Plan view of corner with ties to at least 4 witness monuments. If in disagreement with previously established corner, show the distances between the two corners and also indicate the ties to the disputed corner.



(i) I, Lester J. Schmit
 (type or print name) certify that the corner location on this record was determined by me or under my direction and control and that this U.S. Public Land Survey Monument Record is correct and complete to the best of my knowledge and belief.

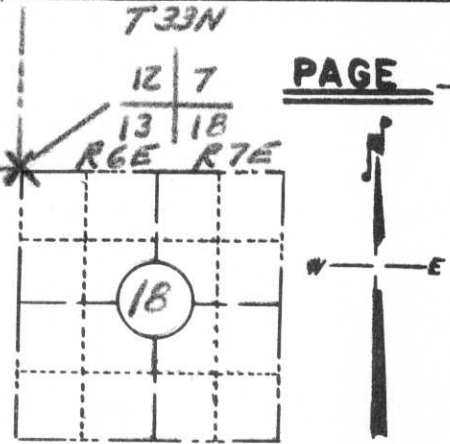


Lester J. Schmit
 Signature _____ Date _____

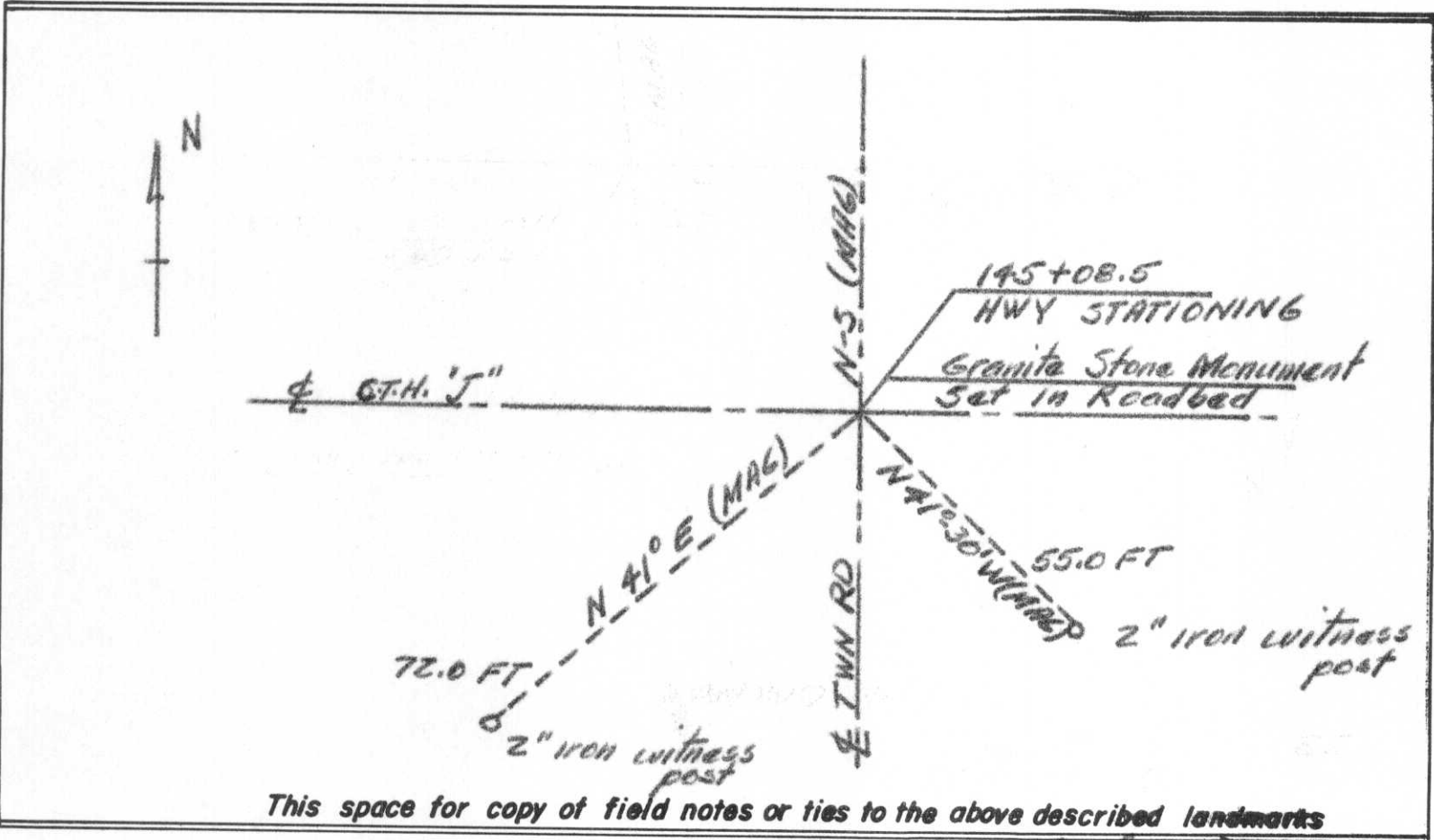
Index No. I-25

PRESERVATION OF LANDMARKS

SECTION 59,635(7) WISCONSIN STATUTES
 COUNTY LINCOLN
 TOWN ROCK FALLS - BIRCH
 HIGHWAY C.T.H. 'J'
 SECTION NO. 5 12, 13, 7, & 18
 T. 33 N., R. 6 & 7 E. SECTION CORNER
 TYPE OF LANDMARK SECTION CORNER
 LOCATION INDICATED ON SKETCH X



LOCATION SKETCH



This space for copy of field notes or ties to the above described landmarks

Field notes or records filed in, book no. Form 710 on file
 at the WHC, Dist No 7 office.
 City of Rhinelander Oneida County.
 Located or established by PM Johnson, 1961
 Title Engineer II

County Clerk's Office _____ County, Wis. } ss
 Received for record _____, 19____

Copy sent to County Surveyor _____, 19____

County Clerk

Index No.

I-1

PRESERVATION OF LANDMARKS

PAGE _____

SECTION 59,635(7) WISCONSIN STATUTES
COUNTY LINCOLN

TOWN ROCK FALLS - BIRCH

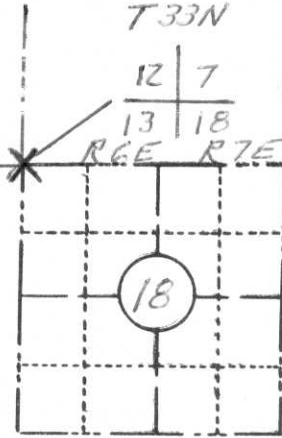
HIGHWAY CT.H. "J"

SECTION NO. 5 12, 13, 7, & 18

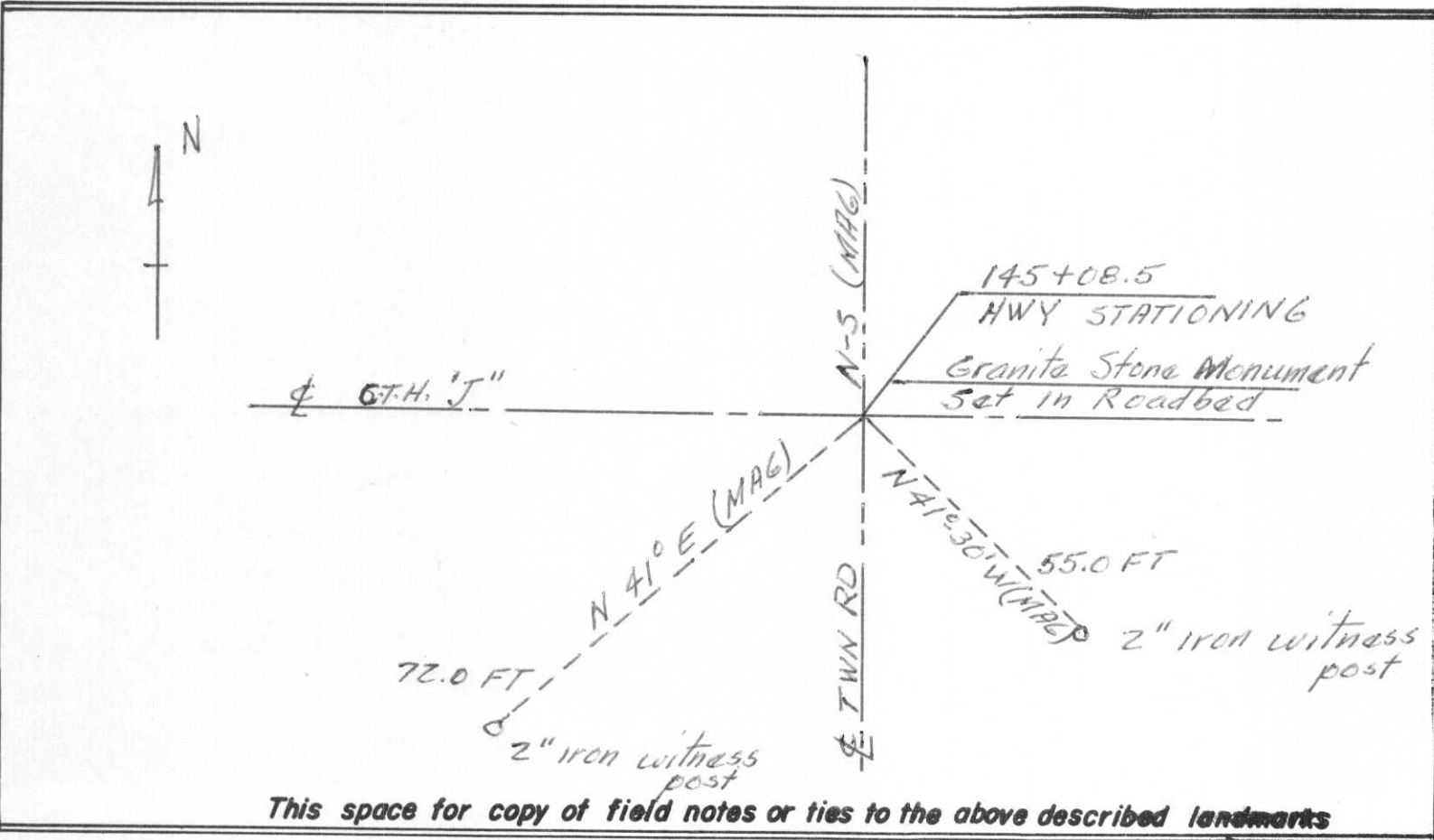
T. 33 N., R. 6 & 7 E. SECTION CORNER

TYPE OF LANDMARK SECTION CORNER

LOCATION INDICATED ON SKETCH X



LOCATION SKETCH



This space for copy of field notes or ties to the above described landmarks

Field notes or records filed in book no. Form 710 on file

at the WHC, Dist No 7 office.

City of Rhineland, Onaida County.

Located or established by PM Johnson, 1961

Title Engineer II

County Clerk's Office _____ County, Wis. } ss

Received for record _____, 19____

Copy sent to County Surveyor _____, 19____

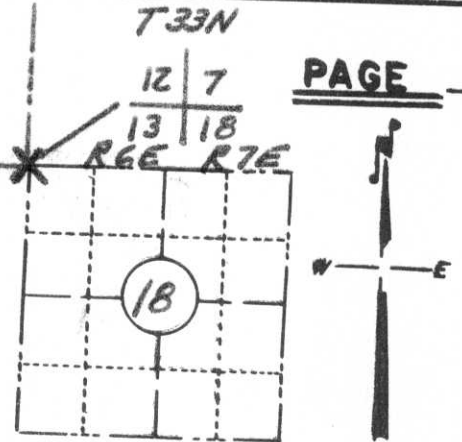
County Clerk

Index No. I-1

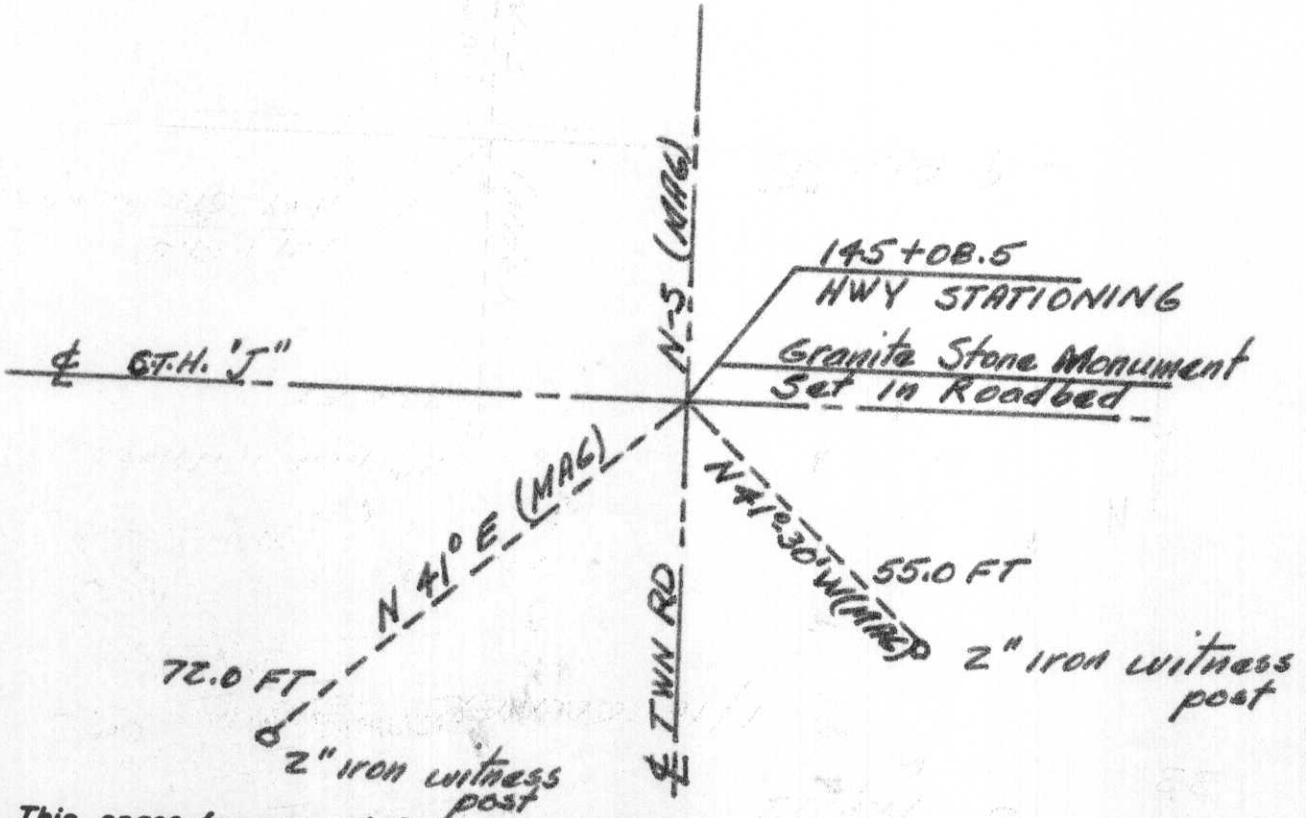
PRESERVATION OF LANDMARKS

PAGE _____

SECTION 59,635(7) WISCONSIN STATUTES
 COUNTY LINCOLN
 TOWN ROCK FALLS - BIRCH
 HIGHWAY G.T.H. 'J'
 SECTION NO.S 12, 13, 7, & 18
 T. 33 N., R. 6 & 7 E. ~~SECTION CORNER~~
 TYPE OF LANDMARK SECTION CORNER
 LOCATION INDICATED ON SKETCH X



LOCATION SKETCH



This space for copy of field notes or ties to the above described landmarks

Field notes or records filed in book no. Form 710 on file

at the WHC, Dist No 7

City of Rhinelander Onaida office. County,

Located or established by PM Johnson, 1961

Title Engineer II

County Clerk's Office _____ County, Wis. } ss

Received for record _____, 19 _____

Copy sent to County Surveyor _____, 19 _____

County Clerk

Index No

F-1





LINCOLN COUNTY
COUNTY SURVEYOR





