

U.S. PUBLIC LAND SURVEY MONUMENT RECORD

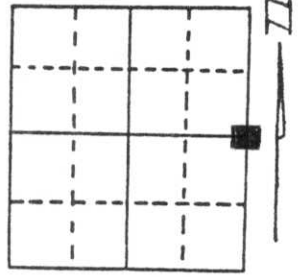
Note: This form is intended and designed to fulfill all requirements of Wisconsin Administrative Code, Chapter A-E 5.02, U.S. Public Land Survey Monument Record (3) (a) (b) (c) (d) (e) (f) (g) (h) (i). An additional sheet may be added if necessary to conform with said requirements.

(a) Corner location: Township 33 North

Range 6 East

Town/City/Village Rock Falls

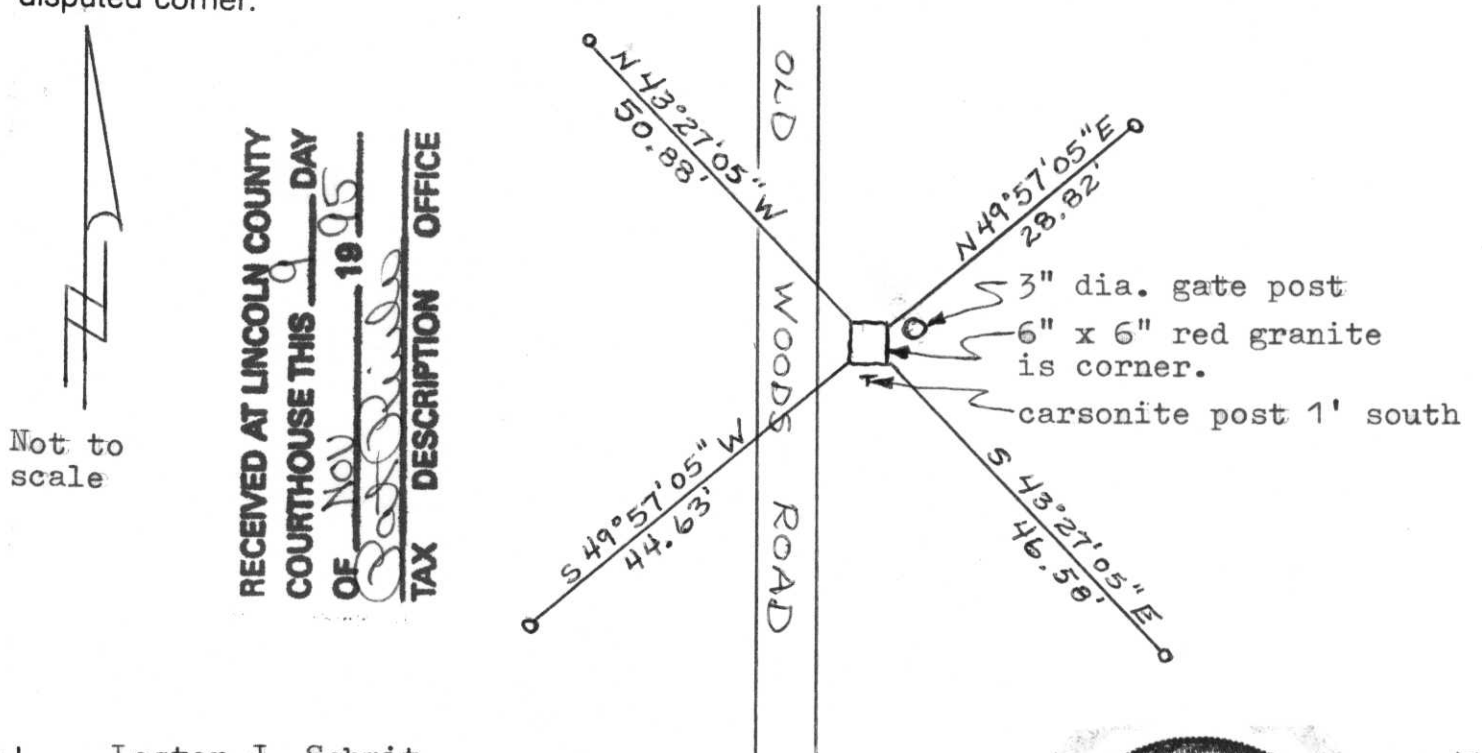
County Lincoln



Section 11

(b) (f) (g) (h) Description of monument found at this corner and if it was accepted, state all evidence (material, testimonial, occupational, plats, records, other monuments) used as a basis for accepting. If not accepted or if nothing was found, state evidence used as basis for establishing location. If reestablished through lost corner proportionate methods, indicate all monuments, distances and directions used to establish. Original Gov't. Survey: Oct. 1854 by Jackson L. Prentice, set wood post for corner with bearings, tamarack 12 E 10 links and tamarack 12 S 57° W 13 links. On a survey by Francis Fox for the Town of Rock Falls in the 1930's, he reestablished the corner location by single proportionate measurement between the section corners, setting 1/4 stone for the corner with offset irons E-W 24.75'. Stone sets in east ditch of old road. I found the 6" x 6" red granite with a cut smooth top and section numbers chiseled on top. Corner is still in the ditch of the old road, but the offset irons are gone. The gate post (3" dia.) is 1.33' ENE of corner. I set a carsonite post 1.0' south of the corner and referenced the corner with 7/8" capped iron rebars as shown below.

(c) (d) (e) Plan view of corner with ties to at least 4 witness monuments. If in disagreement with previously established corner, show the distances between the two corners and also indicate the ties to the disputed corner.



(i) I, Lester J. Schmit
(type or print name) certify that the corner location on this record was determined by me or under my direction and control and that this U.S. Public Land Survey Monument Record is correct and complete to the best of my knowledge and belief.

Lester J. Schmit 3 Nov 95
Signature Date



Index No. G-21





WARNING!
NO TRESPASSING
CRIMINAL TRESPASSER



WARNING!
NO TRESPASSING
THIS IS PRIVATE LAND
Will Prosecute Under The Provisions Of Section 1709.01 of the Ohio Revised Code
FORBIDDING
CRIMINAL TRESPASS



