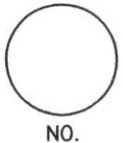
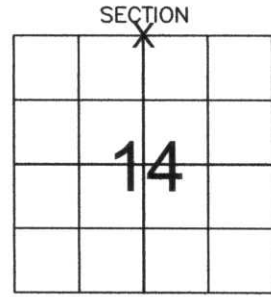


LINCOLN COUNTY U.S. PUBLIC LAND SURVEY MONUMENT LOCATION RECORD

CORNER NUMBER 143362
 SECTION 14
 TOWNSHIP 33 NORTH
 RANGE 6 EAST
 ROCK FALLS
 CITY, VILLAGE, TOWN



LANDMARK BENCHMARK
 FOUND SET
 RESET
 RE-TIED
 CORNER IDENTITY: NORTH 1/4 CORNER SECTION 14
 LINCOLN COUNTY COORDINATE: N: 185052.93
 E: 388616.52
 ELEVATION--(FEET): _____ DATUM: _____
 WEATHER: PARTLY CLOUDY
 DATE OF SURVEY: 11-11-05 TEMPERATURE: 45 °F
 SURVEY PARTY: NATHAN WINCENTSEN, KEITH WALKOWSKI



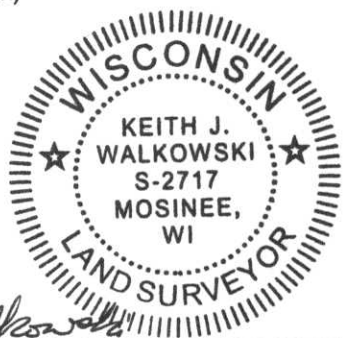
LOCATION (Indicated By X)



BASIS FOR MONUMENT LOCATION:

(DESCRIBE METHOD OF SURVEY AND CORNER AUTHENTICATION)

DUG A 2' x 2' x 4' DEEP HOLE BY HAND, FOUND NO EVIDENCE OF CORNER. SET BERNSTEN 6" BELOW ROAD SURFACE USING 2 REMAINING TIES OF RECORD FROM THE WISCONSIN DEPARTMENT OF TRANSPORTATION FILED IN 1966. PERPETUATED CORNER LOCATION AS SHOWN BELOW.



CERTIFIED CORRECT:
Keith J. Walkowski
 Registered Land Surveyor
 DATE: Nov. 27th, 2005

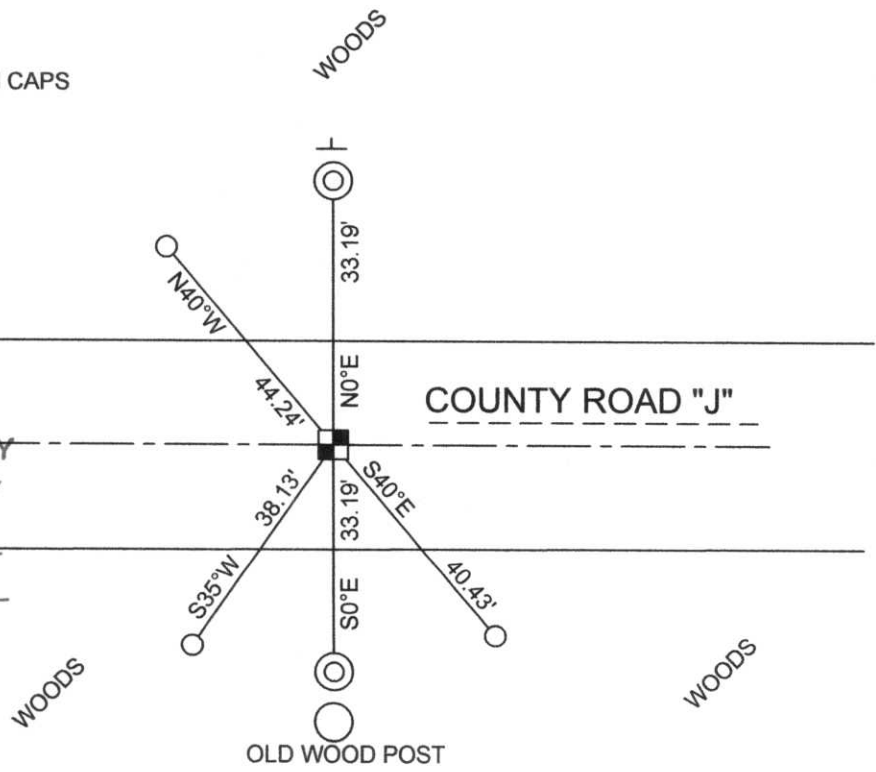
FIELD BOOK NO. 6 PAGE NO. 13
 COMPANY RIVERSIDE LAND SURVEYING LLC

TIE SKETCH:

SHOW MINIMUM OF FOUR (4) HORIZONTAL TIE DISTANCES TO FIXED WITNESS MONUMENTS. DESCRIBE ALL MONUMENTS FOUND OR SET. CORRECT ALL DISTANCES SHOWN TO STANDARD TEMPERATURE OF 68° F.

- SET BERNSTEN
- FOUND 3/4" REBAR WITH ALUMINUM CAPS
- FOUND 1.5" IP
- VINYL SURVEY MARKER POST

NOTE
 - ALL BEARINGS ARE FROM A HAND HELD MAGNETIC COMPASS
 - THIS DRAWING IS NOT TO SCALE

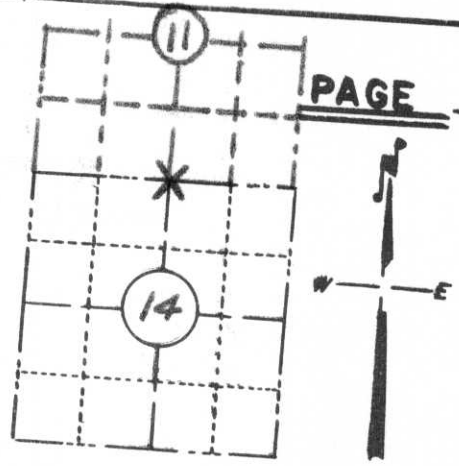


RECEIVED BY LINCOLN COUNTY SURVEYOR THIS 13TH DAY OF December 20 05
Tony Dahl
 COUNTY SURVEYOR

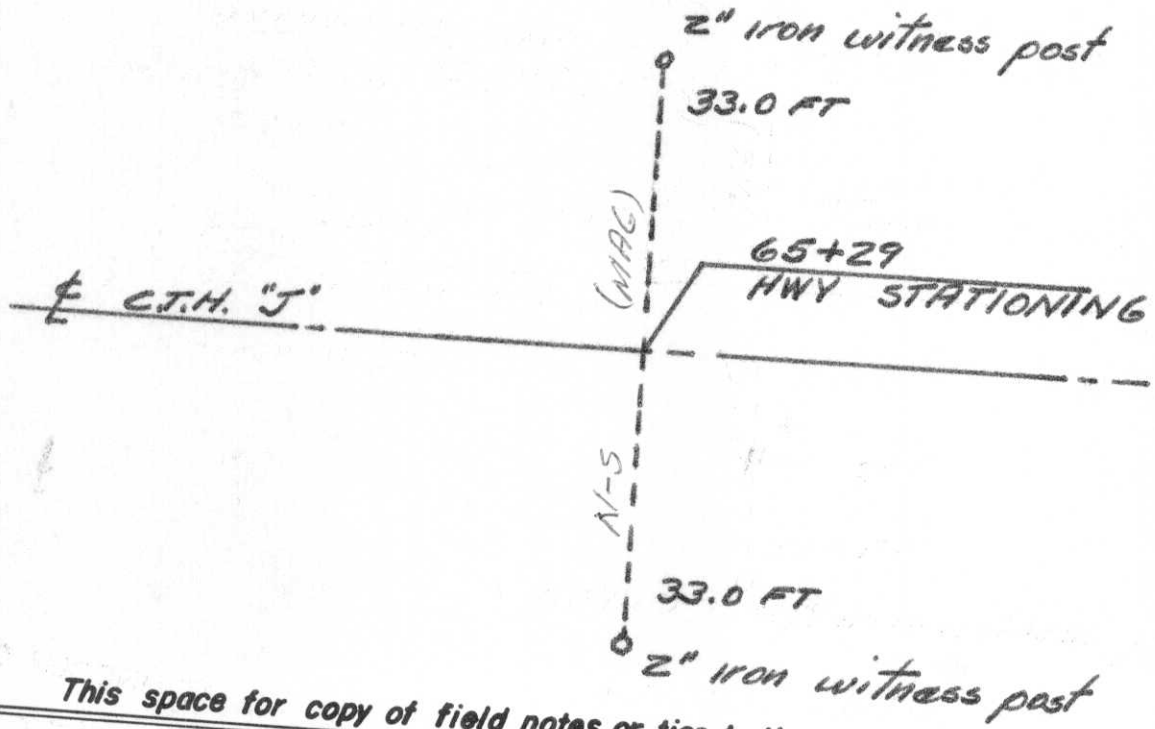
I-19

PRESERVATION OF LANDMARKS

SECTION 59,635(7) WISCONSIN STATUTES
 COUNTY LINCOLN
 TOWN ROCK FALLS
 HIGHWAY CTH "J"
 SECTION NO. 5 11 & 14
 T. 33 N., R. 6 E.
 TYPE OF LANDMARK 1/4 CORNER
 LOCATION INDICATED ON SKETCH X



LOCATION SKETCH



This space for copy of field notes or ties to the above described landmarks

Field notes or records filed in book no. Form 710 on file
 at the W.H.C., Dist. No. 7
 City of Rhinalander Onaida office.
 Located or established by PM Johnson County.
 Title Engineer II, 1961
 County Clerk's Office
 Received for record _____ County, Wis. } ss
 _____, 19____

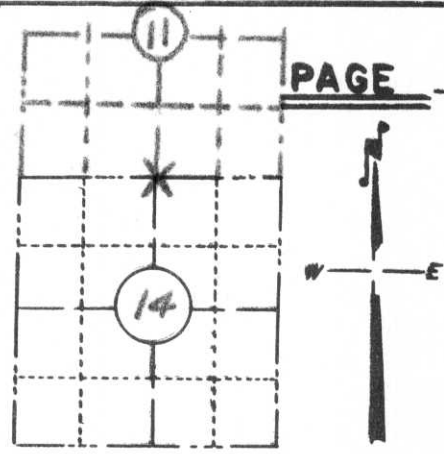
Copy sent to County Surveyor _____, 19____

County Clerk _____

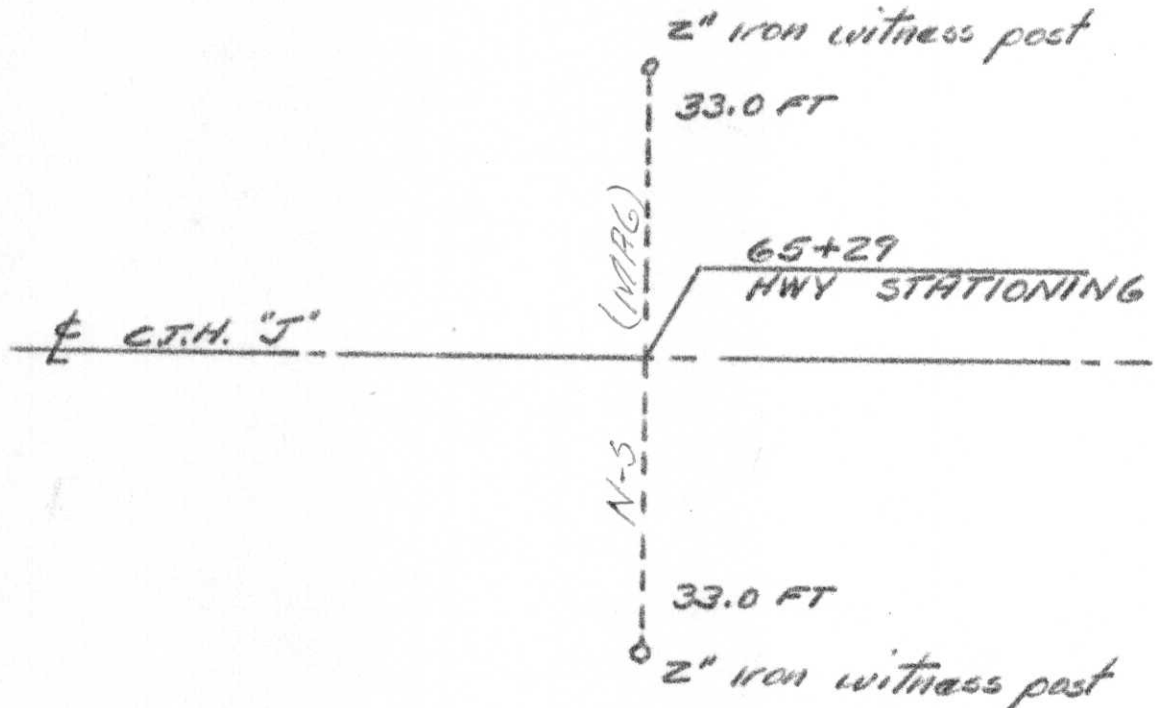
Index No. I-19

PRESERVATION OF LANDMARKS

SECTION 59,635(7) WISCONSIN STATUTES
 COUNTY LINCOLN
 TOWN ROCK FALLS
 HIGHWAY CTH "J"
 SECTION NO. 5 11 & 14
 T. 33 N., R. 6 E.
 TYPE OF LANDMARK 1/4 CORNER
 LOCATION INDICATED ON SKETCH X



LOCATION SKETCH



This space for copy of field notes or ties to the above described landmarks

Field notes or records filed in book no. Form 710 on file
 at the WHC, Dist. No. 7 office.
 City of Rhineland Onaida County.
 Located or established by PM Johnson, 1961
 Title Engineer II

County Clerk's Office _____ County, Wis. } ss
 Received for record _____, 19____

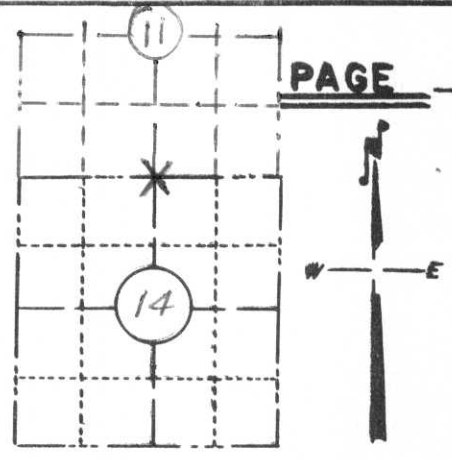
Copy sent to County Surveyor _____, 19____

County Clerk

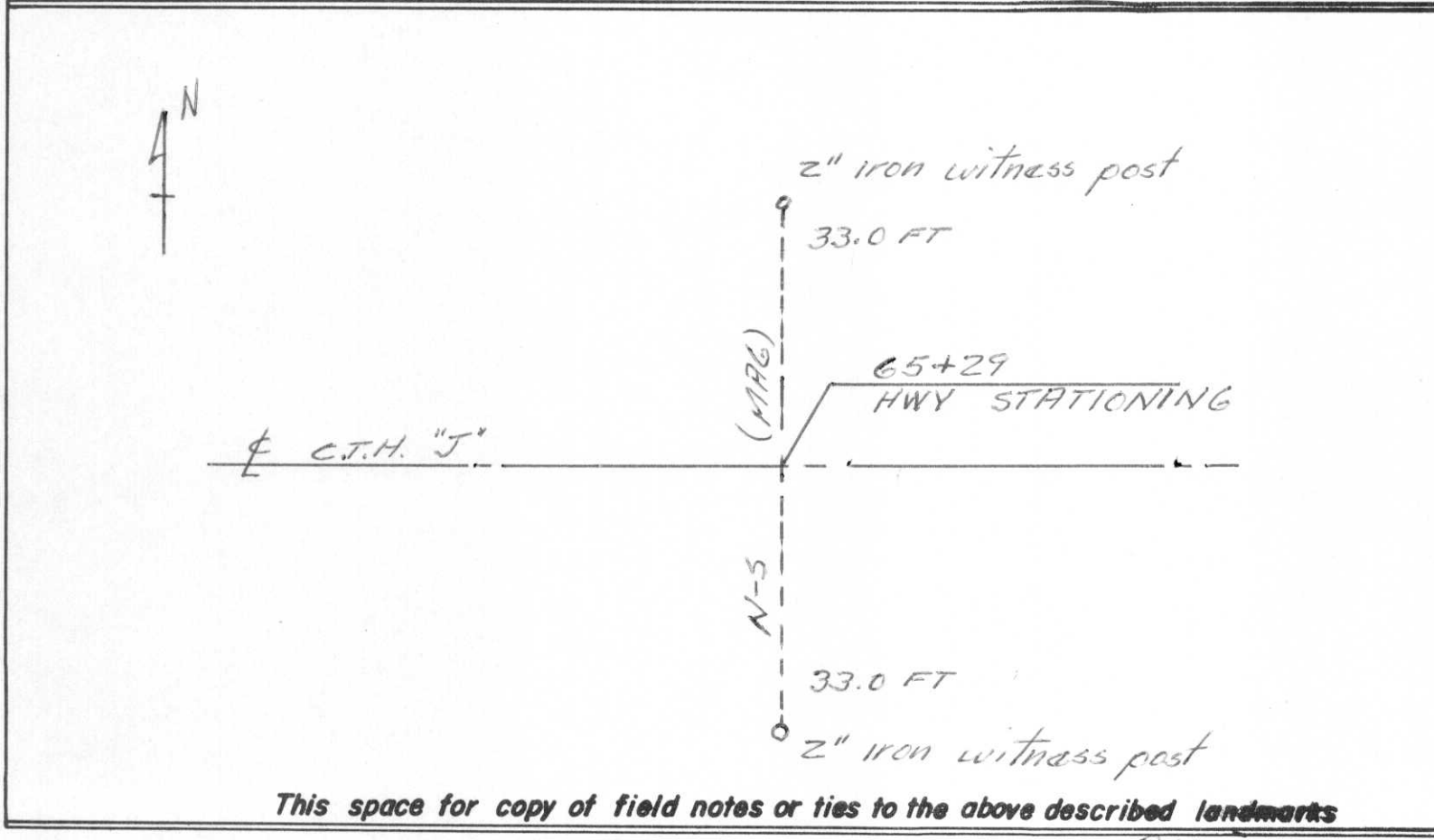
Index No. I-19

PRESERVATION OF LANDMARKS

SECTION 59,635(7) WISCONSIN STATUTES
 COUNTY LINCOLN
 TOWN ROCK FALLS
 HIGHWAY CTH "J"
 SECTION NO. 5 11 & 14
 T. 33 N., R. 6 E.
 TYPE OF LANDMARK 1/4 CORNER
 LOCATION INDICATED ON SKETCH X



LOCATION SKETCH



This space for copy of field notes or ties to the above described landmarks

Field notes or records filed in book no. Form 710 on file
 at the W.H.C., Dist. No. 7 office.
 City of Rhinalandar, Onaida County,
 Located or established by PM Johnson, 1961
 Title Engineer II

County Clerk's Office _____ County, Wis. }^{ss}
 Received for record _____, 19____

Copy sent to County Surveyor _____, 19____

County Clerk

Index No. I-19