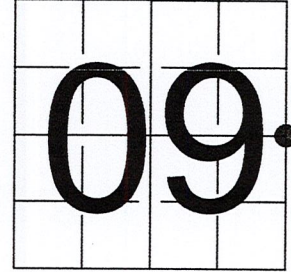


# U S PUBLIC LAND SURVEY MONUMENT RECORD

NOTE: This form is intended and designed to fulfill all requirements of Wisconsin Administrative Code, Chapter A-E 7.08 U.S. Public Land Survey Monument Record (3) (a-i)

A-E 7.08(3)(a) Identity of corner:  
 EAST 1/4 CORNER SECTION 09,  
 TOWNSHIP 33 NORTH,  
 RANGE 06 EAST OF THE 4TH PM,  
 TOWN OF ROCK FALLS,  
 COUNTY OF LINCOLN

WISCORS - LINCOLN COUNTY  
 N: 187,808.138 USft (187,807.440)  
 E: 380,609.693 USft (380,610.390)  
 Datum: NAD83 (2011)  
 GNSS Method RTN - Direct  
 GNSS Control WISCORS VRS



The coordinate value shown has been verified by the average of two or more GPS observations at a markedly different time. Coordinates shown in parenthesis are provided by Lincoln County.

A-E 7.08(3)(b)

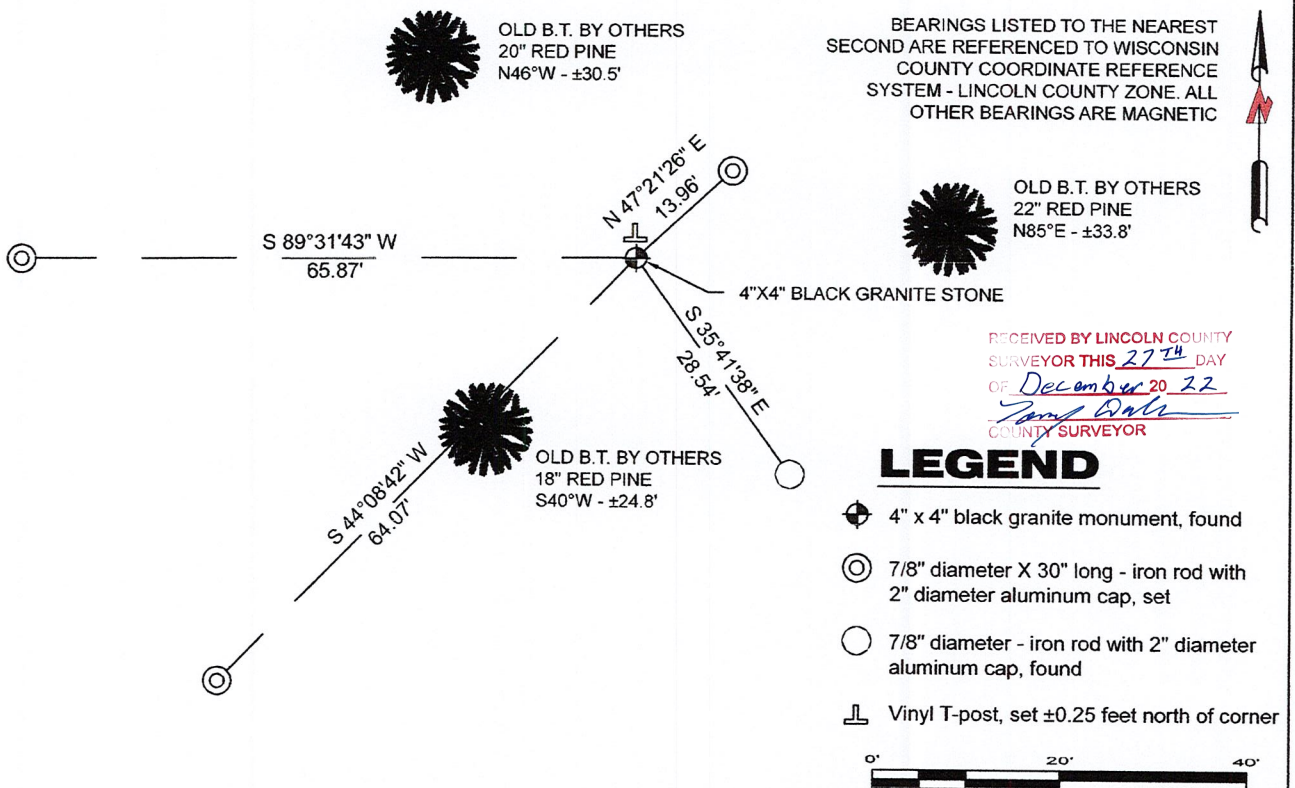
Original Surveyor: Jackson L. Prentice

Date of Original Survey	Commenced:	October 27, 1852	Original Accessories:	
	Completed:	November 9, 1852	Spruce	10 S 31° W 6 Links
			Aspen	X N 31° E 8 Links

1941 - Francis X. Fox (aka Francis X. Fuchs) - Survey of TWP., 32 & 33 N. ~ R.6 E. Town of Rock Falls - indicates "set corners to all forties on all quarter & section lines" on Map M136A.

October 10, 2022 - While performing the 2022 Lincoln County PLSS Corner Remonumentation and GPS Services project, I found a 4" x 4" black granite stone near the computed position provided by Lincoln County. I established 4 new reference monuments as shown below.

A-E 7.08(3)(c)(d) Plan view of corner with references to at least 4 witness monuments.



RECEIVED BY LINCOLN COUNTY  
 SURVEYOR THIS 27<sup>TH</sup> DAY  
 OF December 20 22  
*Jeffrey DeMuth*  
 COUNTY SURVEYOR

## LEGEND

- 4" x 4" black granite monument, found
- 7/8" diameter X 30" long - iron rod with 2" diameter aluminum cap, set
- 7/8" diameter - iron rod with 2" diameter aluminum cap, found
- Vinyl T-post, set ±0.25 feet north of corner

A-E 7.08(3)(e) 1852 Surveyor set a post, 1941 Surveyor set a granite stone monument. I found a 4" x 4" black granite stone.

A-E 7.08(3)(f) I accept this monument as a FOUND PERPETUATED LOCATION of the corner.

A-E 7.08(3)(g)(h) This corner was not determined through lost-corner-proportionate methods.

A-E 7.08(3)(i) I, Jeffrey L. DeMuth, Professional Land Surveyor No. S-2656, hereby certify that the corner location on this record was determined by the Lincoln County Surveyor, and the monuments found or set as shown hereon were measured by me or under my direction and control, and that this U.S. Public Land Survey Monument Record is correct and complete to the best of my knowledge, and belief.

SIGNATURE

December 14, 2022

DATE



6-13

## REPORT

### 2022-Lincoln County PLSS Corner Remonumentation and GPS Services

Wisconsin Corner Point Identification Number: 43306092000

Surveyor: Jeffrey L. DeMuth – S2656

Corner monument: Found 4"x 4" black granite stone.

Field Book: Cardinal North – Lincoln Co. Remon. – 2022-00

Page: 50

Horizontal Datum: WisCRS – Lincoln County Zone – NAD83(2011)

Date / time of initial measurement:

October 10, 2022 - Start 12:39:14 CDT – End 13:41:52 CDT

Reference monuments:

3 – Set - 7/8" diameter X 30" long iron rods with 2" diameter Lincoln Co. aluminum cap.

1 – Found - 7/8" diameter long iron rod with 2" diameter Lincoln Co. aluminum cap.

3 – Found – Bearing Trees by others

#### Coordinate Table

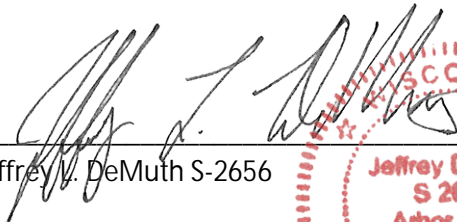
	County Provided	2022 Measurement	Difference
North	187807.440	187808.138	-0.70
East	380610.390	380609.693	0.70

Observed coordinates match with existing coordinates within reason.


Request Data Log for more information.

Additional Notes:

There is a cut line heading west and south from the corner.

  
Jeffrey L. DeMuth S-2656

November 15, 2022  
Date



43306092000\_Mon-N



43306092000\_North



43306092000\_West



43306092000\_South



43306092000\_East

S-2656 10/22

