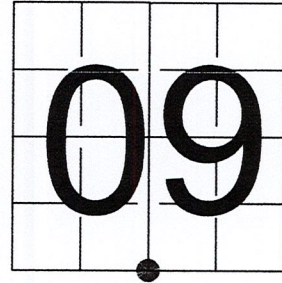


U S PUBLIC LAND SURVEY MONUMENT RECORD

NOTE: This form is intended and designed to fulfill all requirements of Wisconsin Administrative Code, Chapter A-E 7.08 U.S. Public Land Survey Monument Record (3) (a-i)

A-E 7.08(3)(a) Identity of corner:
SOUTH 1/4 CORNER SECTION 09,
TOWNSHIP 33 NORTH,
RANGE 06 EAST OF THE 4TH PM,
TOWN OF ROCK FALLS,
COUNTY OF LINCOLN

WISCORS - LINCOLN COUNTY
N: 185,243.523 USft (185,243.499)
E: 377,918.173 USft (377,918.140)
Datum: NAD83 (2011)
GNSS Method RTN - Direct
GNSS Control WISCORS VRS



The coordinate value shown has been verified by the average of two or more GPS observations at a markedly different time. Coordinates shown in parenthesis are provided by Lincoln County.

A-E 7.08(3)(b)

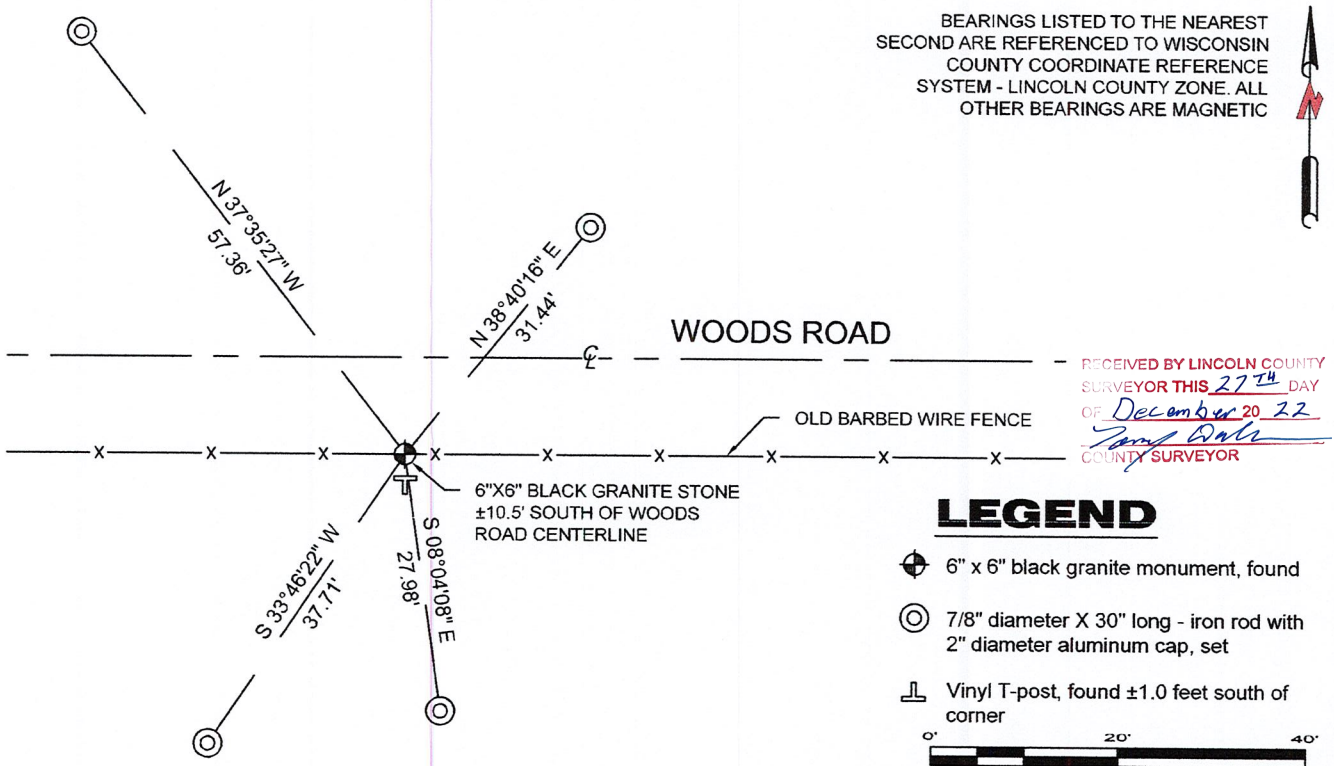
Original Surveyor: Jackson L. Prentice

Date of Original Survey	Commenced:	October 27, 1852	Original Accessories:
	Completed:	November 9, 1852	Pine 10 S 71° E 54 Links
			Pine 12 N 80° W 105 Links

1941 - Francis X. Fox (aka Francis X. Fuchs) - Survey of TWP., 32 & 33 N. ~ R.6 E. Town of Rock Falls - indicates "set corners to all forties on all quarter & section lines" on Map M136A.

October 10, 2022 - While performing the 2022 Lincoln County PLSS Corner Remonumentation and GPS Services project, I found a 6" x 6" black granite stone near the computed position provided by Lincoln County. The monument is ±10.5 feet south of the of a woods road centerline, and on an east-west fence line. I established 4 new reference monuments as shown below.

A-E 7.08(3)(c)(d) Plan view of corner with references to at least 4 witness monuments.



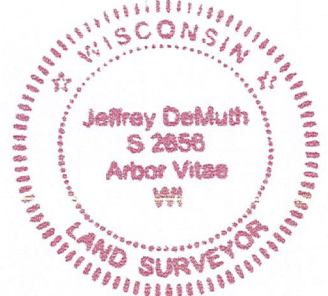
A-E 7.08(3)(e) 1852 Surveyor set a post, 1941 Surveyor set a granite stone monument. I found a 6" x 6" black granite stone.

A-E 7.08(3)(f) I accept this monument as a FOUND PERPETUATED LOCATION of the corner.

A-E 7.08(3)(g)(h) This corner was not determined through lost-corner-proportionate methods.

A-E 7.08(3)(i) I, Jeffrey L. DeMuth, Professional Land Surveyor No. S-2656, hereby certify that the corner location on this record was determined by the Lincoln County Surveyor, and the monuments found or set as shown hereon were measured by me or under my direction and control, and that this U.S. Public Land Survey Monument Record is correct and complete to the best of my knowledge, and belief.

SIGNATURE *Jeffrey L. DeMuth* DATE December 14, 2022



11-1

REPORT

2022-Lincoln County PLSS Corner Remonumentation and GPS Services

Wisconsin Corner Point Identification Number: 43306090020

Surveyor: Jeffrey L. DeMuth – S2656

Corner monument: Found 6" x 6" black granite stone.

Field Book: Cardinal North – Lincoln Co. Remon. – 2022-00

Page: 50

Horizontal Datum: WisCRS – Lincoln County Zone – NAD83(2011)

Date / time of initial measurement:

October 10, 2022 - Start 10:34:19 CDT – End 11:06:36 CDT

Reference monuments:

4 – Set - 7/8" diameter X 30" long iron rods with 2" diameter Lincoln Co. aluminum cap.

1 – Found - T-Post by others.

Coordinate Table

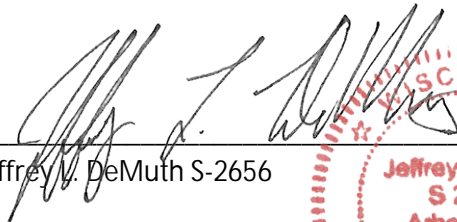

	County Provided	2022 Measurement	Difference
North	185243.499	185243.523	-0.02
East	377918.140	377918.173	-0.03

Observed coordinates match with existing coordinates within reason.

Request Data Log for more information.

Additional Notes:

Corner falls $\pm 10.5'$ south of woods road centerline, and on an E-W fence line.


 Jeffrey L. DeMuth S-2656
 
 November 15, 2022
 Date

43306090020_Mon-N



43306090020_North



43306090020_West

2656 10/12



43306090020_South



43306090020_East

