

U S PUBLIC LAND SURVEY MONUMENT RECORD

NOTE: This form is intended and designed to fulfill all requirements of Wisconsin Administrative Code, Chapter A-E 7.08 U.S. Public Land Survey Monument Record (3) (a-i)

A-E 7.08(3)(a) Identity of corner:
SOUTH 1/4 CORNER SECTION 07,
TOWNSHIP 33 NORTH,
RANGE 06 EAST OF THE 4TH PM,
TOWN OF ROCK FALLS,
COUNTY OF LINCOLN

WISCORS - LINCOLN COUNTY
N: 185,146.726 USft (185,146.829)
E: 367,520.186 USft (367,520.199)
Datum: NAD83 (2011)
GNSS Method RTN - Direct
GNSS Control WISCORS VRS



The coordinate value shown has been verified by the average of two or more GPS observations at a markedly different time. Coordinates shown in parenthesis are provided by Lincoln County.

A-E 7.08(3)(b)

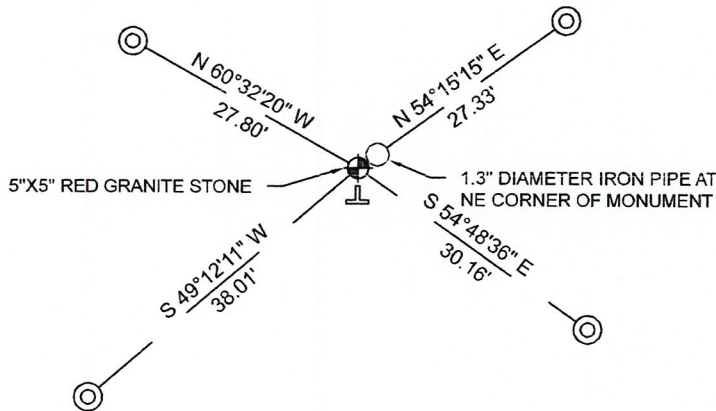
Original Surveyor: Jackson L. Prentice

Date of Original Survey	Commenced:	October 27, 1852	Original Accessories:	
	Completed:	November 9, 1852	Hemlock	12 N 52° W 28 Links
			Maple	8 S 6° E 25 Links

1941 - Francis X. Fox (aka Francis X. Fuchs) - Survey of TWP., 32 & 33 N. ~ R.6 E. Town of Rock Falls - indicates "set corners to all forties on all quarter & section lines" on Map M136A.

October 20, 2022 - While performing the 2022 Lincoln County PLSS Corner Remonumentation and GPS Services project, I found a 5"x5" red granite stone near the computed position provided by Lincoln County. I established 4 new reference monuments as shown below.

A-E 7.08(3)(c)(d) Plan view of corner with references to at least 4 witness monuments.



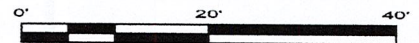
BEARINGS LISTED TO THE NEAREST SECOND ARE REFERENCED TO WISCONSIN COUNTY COORDINATE REFERENCE SYSTEM - LINCOLN COUNTY ZONE. ALL OTHER BEARINGS ARE MAGNETIC



RECEIVED BY LINCOLN COUNTY SURVEYOR THIS 27TH DAY OF December 20 22
Jeffrey DeMuth
COUNTY SURVEYOR

LEGEND

- 5" x 5" red granite monument, found
- 7/8" diameter X 30" long - iron rod with 2" diameter aluminum cap, set
- Vinyl T-post, set ±2.5 feet south of corner



A-E 7.08(3)(e) 1852 Surveyor set a post, 1941 Surveyor set a granite stone monument. I found a 5" x 5" red granite stone.

A-E 7.08(3)(f) I accept this monument as a FOUND PERPETUATED LOCATION of the corner.

A-E 7.08(3)(g)(h) This corner was not determined through lost-corner-proportionate methods.

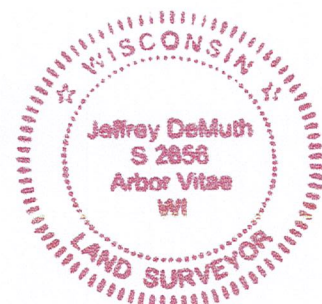
A-E 7.08(3)(i) I, Jeffrey L. DeMuth, Professional Land Surveyor No. S-2656, hereby certify that the corner location on this record was determined by the Lincoln County Surveyor, and the monuments found or set as shown hereon were measured by me or under my direction and control, and that this U.S. Public Land Survey Monument Record is correct and complete to the best of my knowledge, and belief.

Jeffrey L. DeMuth

SIGNATURE

December 14, 2022

DATE



7-3

REPORT

2022-Lincoln County PLSS Corner Remonumentation and GPS Services

Wisconsin Corner Point Identification Number: 43306070020

Surveyor: Jeffrey L. DeMuth – S2656

Corner monument: Found 5" x 5" red granite stone.

Field Book: Cardinal North – Lincoln Co. Remon. – 2022-00

Page: 55

Horizontal Datum: WisCRS – Lincoln County Zone – NAD83(2011)

Date / time of initial measurement:

October 20, 2022 - Start 11:01:10 CDT – End 11:19: 60 CDT

Reference monuments:

4 – Set - 7/8" diameter X 30" long iron rods with 2" diameter Lincoln Co. aluminum cap.

1 – Found - 1.3" diameter iron pipe NE of monument.

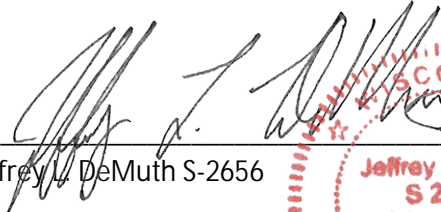
Coordinate Table

	County Provided	2022 Measurement	Difference
North	185146.829	185146.726	0.10
East	367520.199	367520.186	0.01

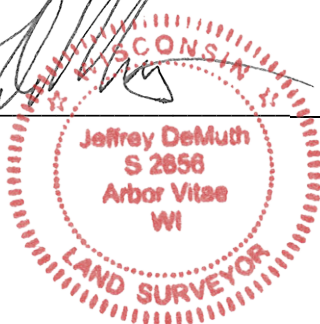
Observed coordinates match with existing coordinates within reason.

Request Data Log for more information.

Additional Notes:


 Jeffrey L. DeMuth S-2656

 November 15, 2022
 Date



43306070020_Mon-N



43306070020_North



PLEASE
DO NOT
DISTURB
NEARBY
SURVEYOR

43306070020

43306070020_West



43306070020_South



43306070020_East

