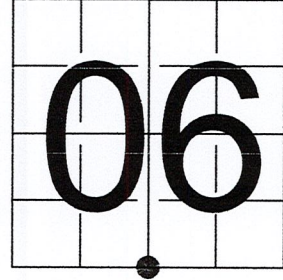


U S PUBLIC LAND SURVEY MONUMENT RECORD

NOTE: This form is intended and designed to fulfill all requirements of Wisconsin Administrative Code, Chapter A-E 7.08 U.S. Public Land Survey Monument Record (3) (a-1)

A-E 7.08(3)(a) Identity of corner:
 SOUTH 1/4 CORNER SECTION 06,
 TOWNSHIP 33 NORTH,
 RANGE 06 EAST OF THE 4TH PM,
 TOWN OF ROCK FALLS,
 COUNTY OF LINCOLN

WISCRS - LINCOLN COUNTY
 N: 190,413.285 USft (190,413.299)
 E: 367,564.062 USft (367,563.880)
 Datum: NAD83 (2011)
 GNSS Method RTN - Direct
 GNSS Control WISCORS VRS



The coordinate value shown has been verified by the average of two or more GPS observations at a markedly different time. Coordinates shown in parenthesis are provided by Lincoln County.

A-E 7.08(3)(b)

Original Surveyor: Jackson L. Prentice

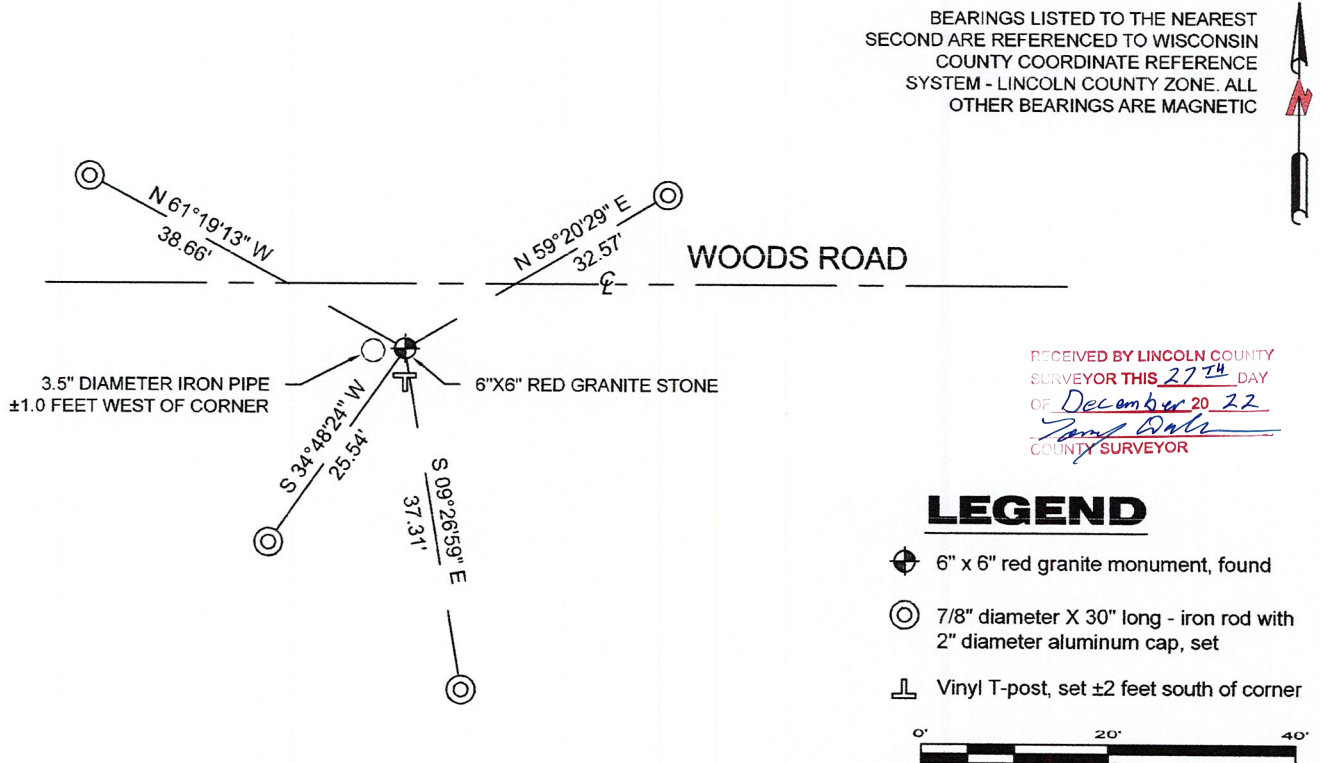
Date of Original Survey	Commenced:	October 9, 1852	Original Accessories:
	Completed:	November 9, 1852	Pine 12 N 30° W 31 Links
			Tamarac 10 S 37° W 38 Links

1941 - Francis X. Fox (aka Francis X. Fuchs) - Survey of TWP., 32 & 33 N. ~ R.6 E. Town of Rock Falls - indicates "set corners to all forties on all quarter & section lines" on Map M136A.

December 13, 2001 - Surveyor 1184 - Dennis M. Green - indicates this position as "stone monument" on Lincoln County map S173A.

October 18, 2022 - While performing the 2022 Lincoln County PLSS Corner Remonumentation and GPS Services project, I found a 6" x 6" red granite stone near the computed position provided by Lincoln County. The monument is ±7 feet south of a woods road centerline. I established 4 new reference monuments as shown below.

A-E 7.08(3)(c)(d) Plan view of corner with references to at least 4 witness monuments.



A-E 7.08(3)(e) 1852 Surveyor set a post, 1941 Surveyor set a granite stone monument, 2001 Surveyor found a stone monument. I found a 6" x 6" red granite stone.

A-E 7.08(3)(f) I accept this monument as a FOUND PERPETUATED LOCATION of the corner.

A-E 7.08(3)(g)(h) This corner was not determined through lost-corner-proportionate methods.

A-E 7.08(3)(i) I, Jeffrey L. DeMuth, Professional Land Surveyor No. S-2656, hereby certify that the corner location on this record was determined by the Lincoln County Surveyor, and the monuments found or set as shown hereon were measured by me or under my direction and control, and that this U.S. Public Land Survey Monument Record is correct and complete to the best of my knowledge, and belief.

Jeffrey L. DeMuth
 December 14, 2022
 SIGNATURE DATE



E-3

REPORT

2022-Lincoln County PLSS Corner Remonumentation and GPS Services

Wisconsin Corner Point Identification Number: 43306060020

Surveyor: Jeffrey L. DeMuth – S2656

Corner monument: Found 6" x 6" red granite stone.

Field Book: Cardinal North – Lincoln Co. Remon. – 2022-00

Page: 53

Horizontal Datum: WisCRS – Lincoln County Zone – NAD83(2011)

Date / time of initial measurement:

October 18, 2022 - Start 12:40:54 CDT – End 12:54:35 CDT

Reference monuments:

4 – Set - 7/8" diameter X 30" long iron rods with 2" diameter Lincoln Co. aluminum cap.

1 – Found - 3.5" diameter iron pipe

Coordinate Table

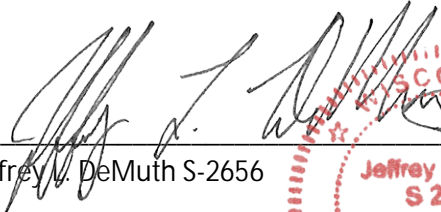
	County Provided	2022 Measurement	Difference
North	190413.299	190413.285	0.01
East	367563.880	367564.062	-0.18

Observed coordinates match with existing coordinates within reason.

Request Data Log for more information.

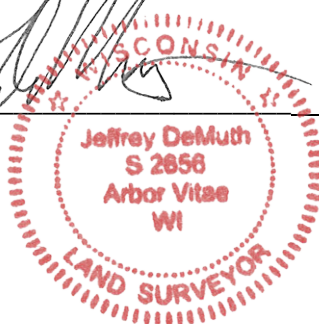
Additional Notes:

Corner falls $\pm 7'$ south of woods road centerline.


 Jeffrey L. DeMuth S-2656

November 15, 2022

Date



43306060020_Mon-N



43306060020_North



43306060020_West



43306060020_South



43306060020_East

