

U.S. PUBLIC LAND SURVEY MONUMENT RECORD

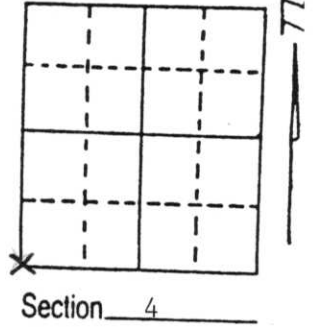
Note: This form is intended and designed to fulfill all requirements of Wisconsin Administrative Code, Chapter A-E 5.02, U.S. Public Land Survey Monument Record (3) (a) (b) (c) (d) (e) (f) (g) (h) (i). An additional sheet may be added if necessary to conform with said requirements.

(a) Corner location: Township 33 North

Range 6 East

Town/City/Village Rock Falls

County Lincoln

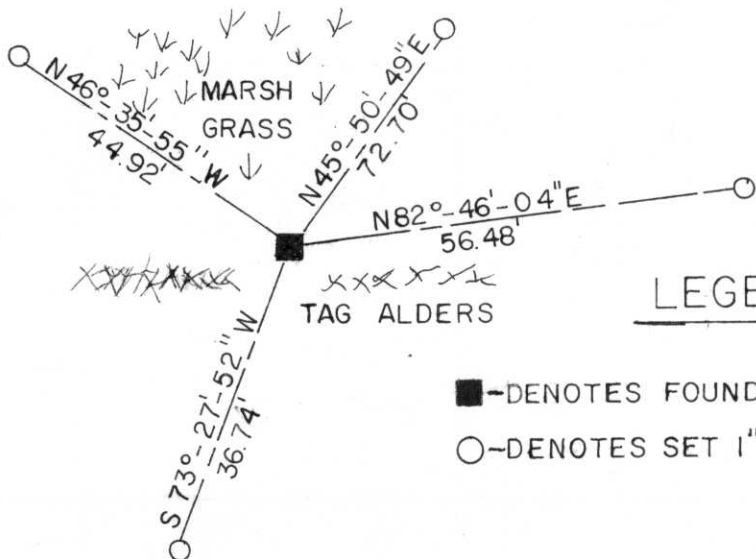


(b) (f) (g) (h) Description of monument found at this corner and if it was accepted, state all evidence (material, testimonial, occupational, plats, records, other monuments) used as a basis for accepting. If not accepted or if nothing was found, state evidence used as basis for establishing location. If reestablished through lost corner proportionate methods, indicate all monuments, distances and directions used to establish.

We found a 6" x 6" stone monument in place. Its position was verified using the West 1/4 of Section 4 as well as the South 1/4 corner of Section 5. This monument is believed to be set by the resurvey completed by Francis Fox in 1941.

(c) (d) (e) Plan view of corner with ties to at least 4 witness monuments. If in disagreement with previously established corner, show the distances between the two corners and also indicate the ties to the disputed corner.

SOUTHWEST CORNER SECTION 4



RECEIVED AT LINCOLN COUNTY
COURTHOUSE THIS 21 DAY
Feb. 19 95
Pat Radenz
SURVEYOR'S OFFICE

LEGEND

- - DENOTES FOUND STONE MONUMENT.
- - DENOTES SET 1" I.P.

(i) I, Thomas A. Radenz
(type or print name) certify that the corner location on this record was determined by me or under my direction and control and that this U.S. Public Land Survey Monument Record is correct and complete to the best of my knowledge and belief.

Thomas A. Radenz
Signature

2-9-95
Date



Index No. E-9



5 4
8 9







