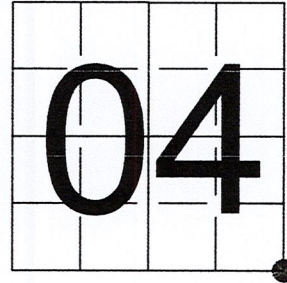


U S PUBLIC LAND SURVEY MONUMENT RECORD

NOTE: This form is intended and designed to fulfill all requirements of Wisconsin Administrative Code, Chapter A-E 7.08 U.S. Public Land Survey Monument Record (3) (a-i)

A-E 7.08(3)(a) Identity of corner:
SOUTHEAST CORNER SECTION 04,
TOWNSHIP 33 NORTH,
RANGE 06 EAST OF THE 4TH PM,
TOWN OF ROCK FALLS,
COUNTY OF LINCOLN

WISCORS - LINCOLN COUNTY
N: 190,400.648 USft (190,400.599)
E: 380,623.781 USft (380,623.709)
Datum: NAD83 (2011)
GNSS Method RTN - Direct
GNSS Control WISCORS VRS



The coordinate value shown has been verified by the average of two or more GPS observations at a markedly different time. Coordinates shown in parenthesis are provided by Lincoln County.

A-E 7.08(3)(b)

Original Surveyor: Jackson L. Prentice

Date of Original Survey Commenced: October 27, 1852
Completed: November 9, 1852

Original Accessories:
Birch 10 S 67° W 32 Links
Birch 10 S 14° E 22 Links
Pine 20 N 55° E 27 Links
Pine 10 N 57° W 23 Links

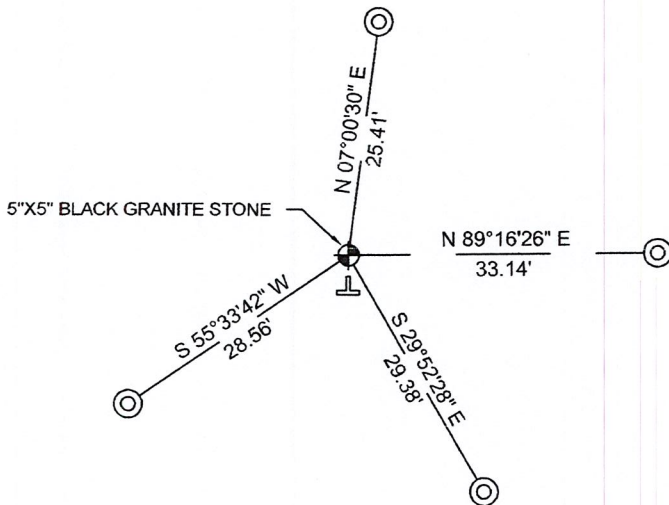
1941 - Francis X. Fox (aka Francis X. Fuchs) - Survey of TWP., 32 & 33 N. ~ R.6 E. Town of Rock Falls - indicates "set corners to all forties on all quarter & section lines" on Map M136A.

1963 - Surveyor 1418 - William H. Stuth - indicates this position as "by others" on Lincoln County map S334A.

October 29, 1990 - Surveyor 1182 - William E. Bandow - indicates this position as "found 6"x6" granite monument" on Lincoln County map L137A-B.

October 18, 2022 - While performing the 2022 Lincoln County PLSS Corner Remonumentation and GPS Services project, I found a 5" x 5" black granite stone near the computed position provided by Lincoln County. I established 4 new reference monuments as shown below.

A-E 7.08(3)(c)(d) Plan view of corner with references to at least 4 witness monuments.



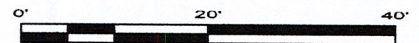
BEARINGS LISTED TO THE NEAREST SECOND ARE REFERENCED TO WISCONSIN COUNTY COORDINATE REFERENCE SYSTEM - LINCOLN COUNTY ZONE. ALL OTHER BEARINGS ARE MAGNETIC



RECEIVED BY LINCOLN COUNTY
SURVEYOR THIS 27TH DAY
OF December 20 22
Jeffrey DeMuth
COUNTY SURVEYOR

LEGEND

- 5" x 5" black granite monument, found
- 7/8" diameter X 30" long - iron rod with 2" diameter aluminum cap, set
- Vinyl T-post, set ±2.5 feet south of corner

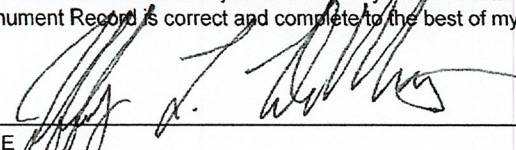


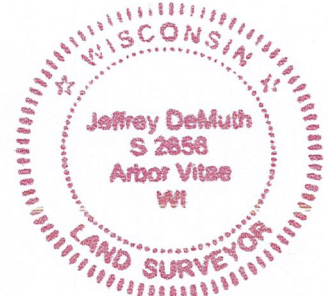
A-E 7.08(3)(e) 1852 Surveyor set a post, 1941 Surveyor set a granite stone monument, 1963 surveyor found something, 1990 Surveyor found a granite monument. I found a 5"x5" black granite stone.

A-E 7.08(3)(f) I accept this monument as a FOUND PERPETUATED LOCATION of the corner.

A-E 7.08(3)(g)(h) This corner was not determined through lost-corner-proportionate methods.

A-E 7.08(3)(i) I, Jeffrey L. DeMuth, Professional Land Surveyor No. S-2656, hereby certify that the corner location on this record was determined by the Lincoln County Surveyor, and the monuments found or set as shown hereon were measured by me or under my direction and control, and that this U.S. Public Land Survey Monument Record is correct and complete to the best of my knowledge, and belief.


SIGNATURE _____ DATE December 14, 2022



REPORT

2022-Lincoln County PLSS Corner Remonumentation and GPS Services

Wisconsin Corner Point Identification Number: 43306040000

Surveyor: Jeffrey L. DeMuth – S2656

Corner monument: Found 5" x 5" black granite stone.

Field Book: Cardinal North – Lincoln Co. Remon. – 2022-00

Page: 53

Horizontal Datum: WisCRS – Lincoln County Zone – NAD83(2011)

Date / time of initial measurement:

October 18, 2022 - Start 14:15:29 CDT – End 14:25:33 CDT

Reference monuments:

4 – Set - 7/8" diameter X 30" long iron rods with 2" diameter Lincoln Co. aluminum cap.

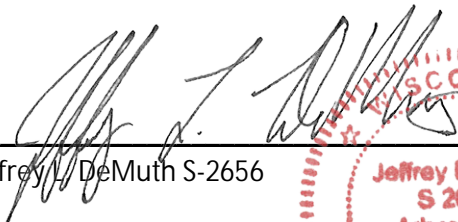
Coordinate Table

	County Provided	2022 Measurement	Difference
North	190400.599	190400.648	-0.05
East	380623.709	380623.781	-0.07

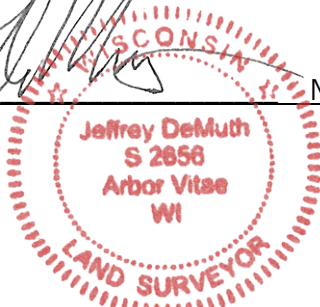
Observed coordinates match with existing coordinates within reason.

Request Data Log for more information.

Additional Notes:


Jeffrey L. DeMuth S-2656

November 15, 2022
Date



43306040000_Mon-N



43306040000_North



43306040000_West



43306040000_South



43306040000_East

