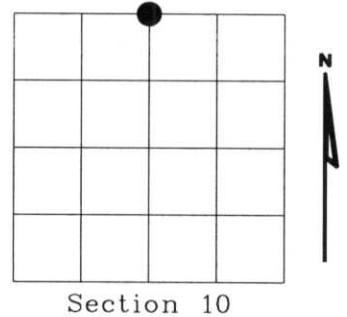


U.S. PUBLIC LAND SURVEY MONUMENT RECORD

NOTE: This form is intended and designed to fulfill all requirements of Wisconsin Administrative Code, Chapter A-E 7.08 U.S. Public Land Survey Monument Record (3)(a)(b)(c)(d)(e)(f)(g)(h)(i). An additional sheet may be added if necessary to conform with said requirements.

(a) Corner location: Township 33 North
 Range 06 East
 Town of ROCK FALLS
 LINCOLN County, Wisconsin



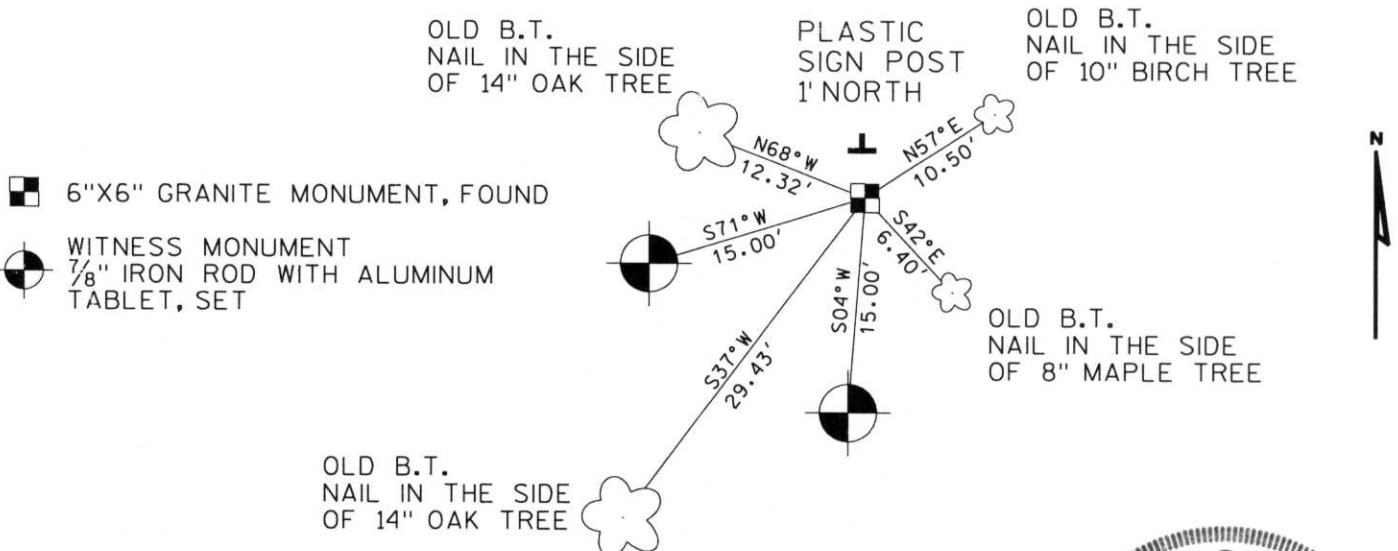
Section 10

(b)(f)(g)(h) Description of monument found at this corner and if it was accepted, state all evidence (material, testimonial, occupational, plats, records, other monuments) used as a basis for accepting. If not accepted or if nothing was found, state evidence used as basis for establishing location. If reestablished through lost corner proportionate methods, indicate all monuments, distances and directions used to establish. Indicate type of monument found or set and sign post.

- 1943 - FRANCIS X. FOX SET 1/4 STONE AT OLD 1/4 POST.
- 1990 - WILLIAM E. BANDOW FOUND 6" X 6" GRANITE MONUMENT, MAP DRAWING NO. 9049.
- 2000 - I FOUND THE 6" X 6" GRANITE MONUMENT, AND BT'S WITH NAILS INSIDE OF SAME, AS SHOWN IN SKETCH BELOW

RECEIVED AT LINCOLN COUNTY
 COURTHOUSE THIS 10TH DAY
 OF August 20 00
Tony Dallman
 LAND INFORMATION OFFICE

(c)(d)(e) Plan view of corner with ties to at least 4 witness monuments. If in disagreement with previously established corner, show the distances between the two corners and also indicate the ties to the disputed corner.



(i) I, Dennis B. Roberts, Registered Land Surveyor *S-1863, hereby certify that the corner location on this record was determined by me or under my direction and control and that this U.S. Public Land Survey Monument Record is correct and complete to the best of my knowledge and belief.

Dennis B. Roberts 8-08-2000
 Signature Date



Index No. E-15









